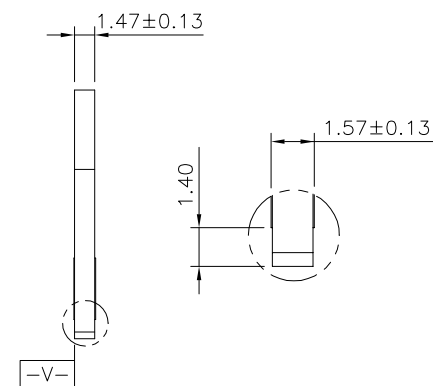
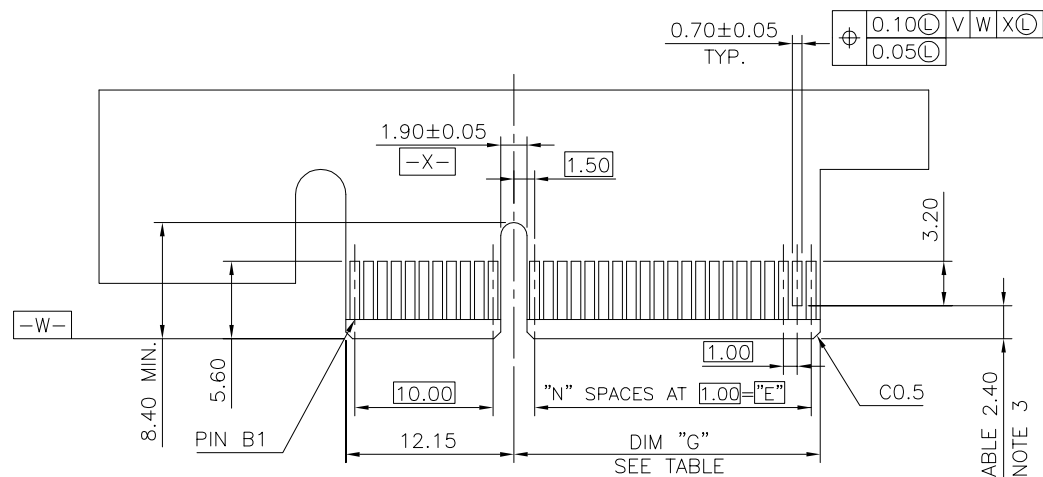


mat'l. code				surface		tolerance		projection		product family			
-				- ✓		ASME_Y14.5				PCI_EXPRESS			
ltr	ecn no	dr	date	tolerances unless otherwise specified						title			
F	T06-0179	M W	10/24/06			.0±0.30				PCI_EXPRESS_CARD_EDGE_GEN3			
G	T06-0209	M W	12/08/06	angles	linear	.00±0.20				STRADDLE_MOUNT_ASS'Y			
H	T10-0068	J H	5/26/10	±2'	linear	.000±0.10		scale N/A					
J	DG-008880	H T	12/12/11	dr	ZHENHUA_LIU	2016-03-25				dwg no		sheet 1 of 7	size
K	DG-23735	LZH	04/05/16	engr	ZHENHUA_LIU	2016-03-25				10025026		A4	
L	DG-24598	LZH	07/28/16	chr	STONE_LI	2016-03-25							
				appd	PM_ZHENG	2016-03-25				type		CUSTOMER Drawing	
sheet index		revision sheet		L	7								

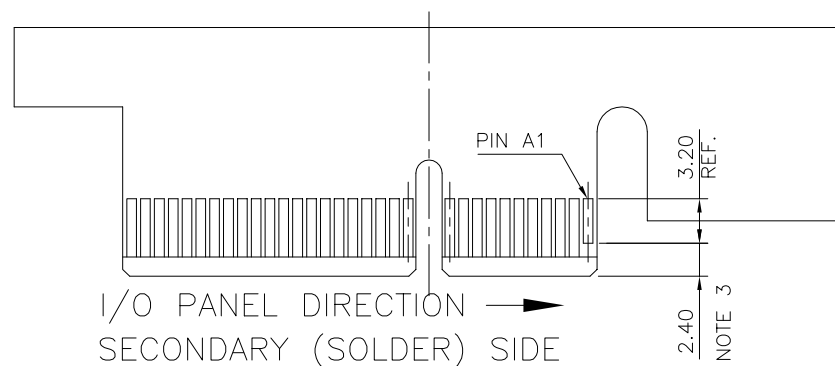


## RECOMMEND OF PCB DIMENSIONS

[illegible]



← I/O PANEL DIRECTION  
PRIMARY (COMPONENT) SIDE



I/O PANEL DIRECTION →  
SECONDARY (SOLDER) SIDE

ADD-IN CARD EDGE-FINGER DIMENSIONS

#	POS	REF.	N	DIM "G"	"F"
36	6		8.15	B17	
64	20		22.15	B31	
98	37		39.15	B48	
164	70		72.15	B81	

mat'l. code				surface	tolerance	projection	product family
-				ASME_Y14.5	ASME_Y14.5	MM	PCI_EXPRESS
ltr	ecn no	dr	date	tolerances unless otherwise specified		MM	title
				angles	.0±0.20		PCI_EXPRESS_CARD_EDGE_GEN3
				±2'	.00±0.13		STRADDLE_MOUNT_ASS'Y
					.000±0.05		scale N/A
				dr	ZHENHUA_LIU	2016-03-25	Amphenol FCI
				enr	ZHENHUA_LIU	2016-03-25	dwg no
				chr	STONE_LI	2016-03-25	sheet 3 of 7
				app	PM_ZHENG	2016-03-25	size
sheet	revision	L					10025026
index	sheet	7					A4
							type
							CUSTOMER Drawing

## NOTES:

## 1.MATERIAL: RATED.

HOUSING: HIGH TEMPERATURE NYLON, GLASS FILLED UL94V-0

TERMINAL: COPPER ALLOY

PLATING: SEE PRODUCT NUMBER CODE

METAL BOARD LOCKS: COPPER ALLOY

FINISH: 100u" TIN OVER 50u" NICKEL UNDERPLATE

## 2.PRODUCT SPECIFICATION: GS-12-233

③NO TIE BAR PERMITTED FROM CARD EDGE TO LEADING EDGE OF PAD FOR PINS A1 AND PIN NUMBERS "F".

④CHAMFER EDGES MUST BE FREE OF CUTTING BURRS.

⑤FREQUENCY &amp; LOCATION AT SUPPLIER DISCRETION. RIDGE MAY BE CONTINUOUS WITH NO BREAKS.

## 6.RoHS COMPATIBLE PRODUCT SPECIFICATIONS

## a - PLATING:

- "LF" MEANS THE PRODUCT IS LEAD-FREE

## b - MANUFACTURING PROCESS COMPATIBILITY

- THE HOUSING WILL WITHSTAND EXPOSURE TO 260°C±5°C SOLDER BATH TEMPERATURE FOR 5 SECONDS IN A REFLOW SOLDER APPLICATION.

CONNECTOR	# POS	REF.	N	DIM "A"	DIM "B"	DIM "C"	"E"	"F"
1 PORT	36		6	7.65	25.00	12.30	6.00	34.8
4 PORT	64		20	21.65	39.00	26.30	20.00	48.8
8 PORT	98		37	38.65	56.00	43.30	37.00	65.8
16 PORT	164		70	71.65	89.00	76.30	70.00	98.8

## PRODUCT NUMBER CODE

10025026 -x 0 x 0 x 1 □ □

## HOUSING COLOR OPTIONS

0-NATURAL, HALOGEN

1-BLACK, HALOGEN

△ 2-NATURAL, HALOGEN FREE

3-BLACK, HALOGEN FREE

## RESERVE

## TERMINAL PLATING OPTIONS

0-50u" Ni UNDERPLATE

30u" Au CONTACT AREA

100u" TIN TAIL AREA ----- COMPATIBLE RoHS

1-50u" Ni UNDERPLATE

15u" Au CONTACT AREA

100u" TIN TAIL AREA ----- COMPATIBLE RoHS

2-50u" Ni UNDERPLATE

GOLD FLASH CONTACT AREA

100u" TIN TAIL AREA ----- COMPATIBLE RoHS

3-50u" Ni UNDERPLATE

30u" Au CONTACT AREA

100u" TIN/LEAD TAIL AREA ----- INCOMPLIANT RoHS

4-50u" Ni UNDERPLATE

15u" Au CONTACT AREA

100u" TIN/LEAD TAIL AREA ----- INCOMPLIANT RoHS

5-50u" Ni UNDERPLATE

GOLD FLASH CONTACT AREA

100u" TIN/LEAD TAIL AREA ----- INCOMPLIANT RoHS

## PACKAGING OPTIONS

T: TRAY PACKAGING(IN GENERAL VERTICAL DIRECTION)

C: TAPE &amp; REEL WITH INSERT CAP (FOR 98P ONLY)

H: TRAY PACKAGING(IN SPECIAL HORIZONTAL DIRECTION FOR 164P ONLY)

P: TRAY PACKAGING WITH INSERT CAP

△ S: TRAY PACKAGING WITH INSERT CAP(IN SPECIAL HORIZONTAL DIRECTION)

## TAIL LENGTH OPTIONS

DIM "D"	PCB THICKNESS
3.85 +0.25 -0.13	1.56

## LEAD FREE OPTIEON

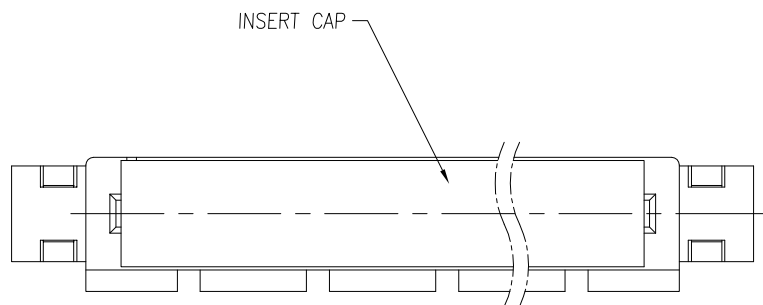
"LF" FOR TERMINAL PLATING OPTION 0,1,2

mat'l. code	surface	tolerance	projection	product family
-	-	ASME_Y14.5	MM	PCI_EXPRESS
lfr	ecn no	dr	date	title
				PCI_EXPRESS_CARD_EDGE_GEN3
				STRADDLE_MOUNT_ASS'Y
				dwg no
				sheet 4 of 7
				size
				A4
				type
				CUSTOMER Drawing
sheet index	revision sheet	L	7	

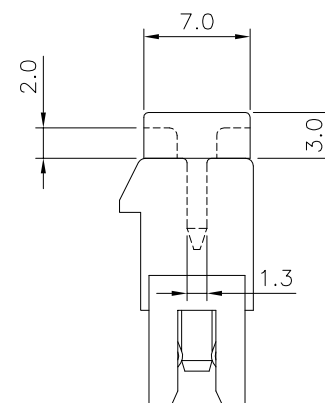
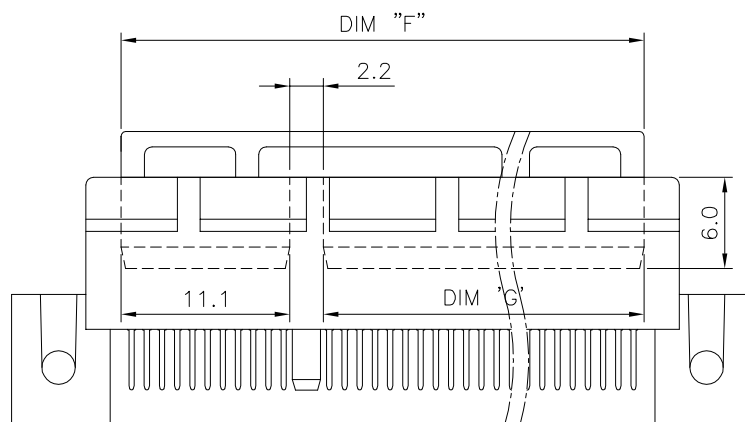
## NOTES:

## 1. MATERIAL:

INSERT CAP: THERMOPLASTIC UL94V-0; BLACK COLOR.



DIMENSIONS		
POSITION	F	G
36	20.4	7.1
64	34.4	21.1
98	51.4	38.1
164	84.4	71.1



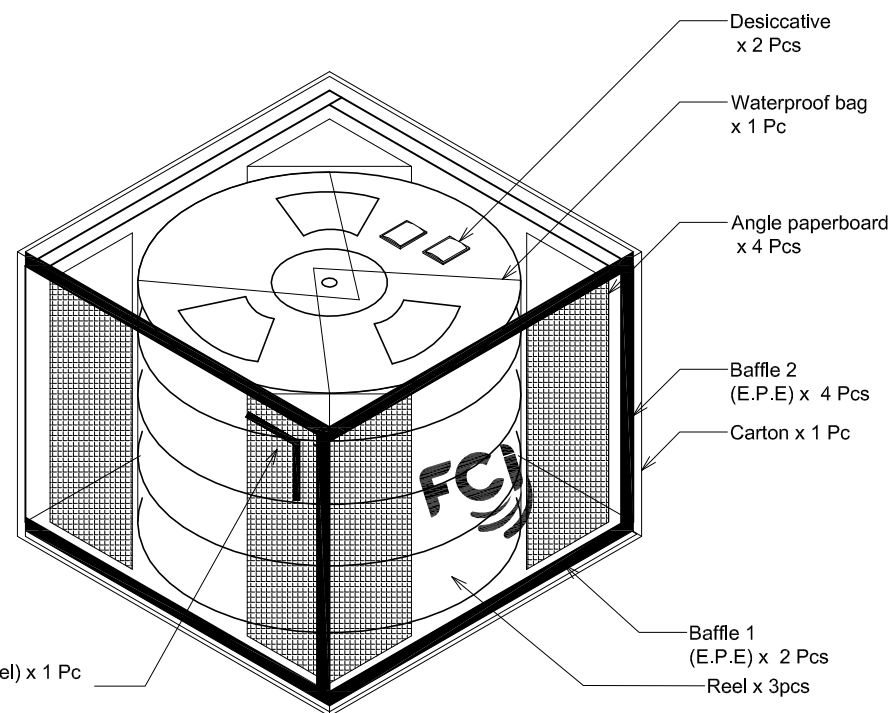
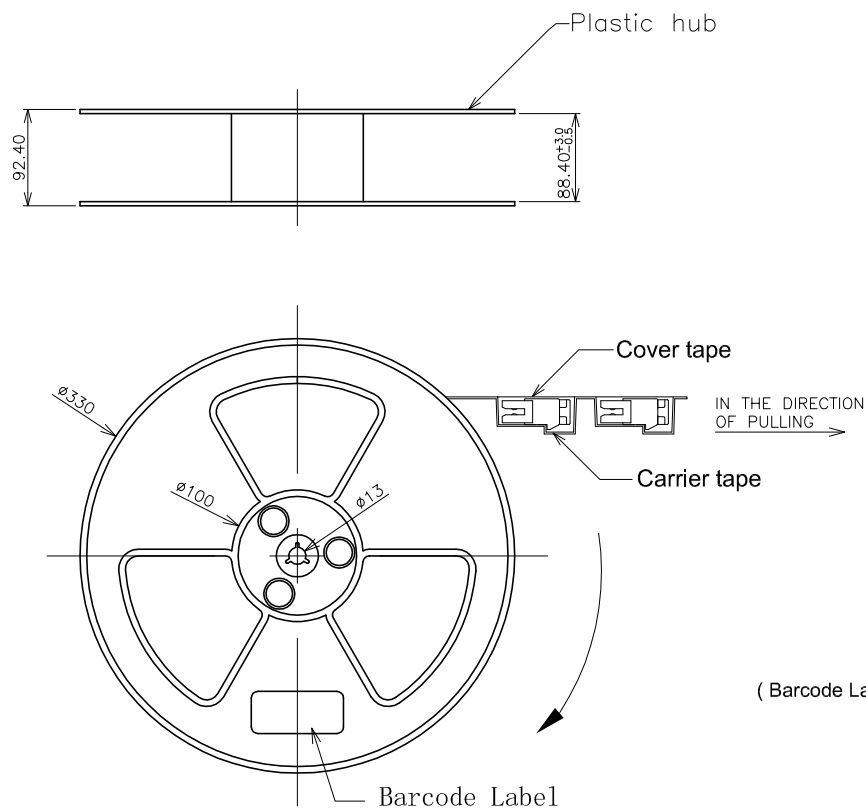
mat'l. code				surface		tolerance		projection		product family			
-				- ✓		ASME_Y14.5				PCI_EXPRESS			
ltr	ecn	no	dr	date	tolerances unless otherwise specified				title				
					angles	.0±0.30			PCI_EXPRESS_CARD_EDGE_GEN3				
					±2°	.00±0.20			STRADDLE_MOUNT_ASS'Y				
					linear	.000±0.10			scale N/A				
				dr	ZHENHUA_LIU	2016-03-25			dwg no		sheet 5 of 7		size
				enfr	ZHENHUA_LIU	2016-03-25			10025026		A4		
				chr	STONE_LI	2016-03-25							
				appd	PM_ZHENG	2016-03-25			type CUSTOMER Drawing				
sheet index		revision sheet		L	7								

## NOTE:

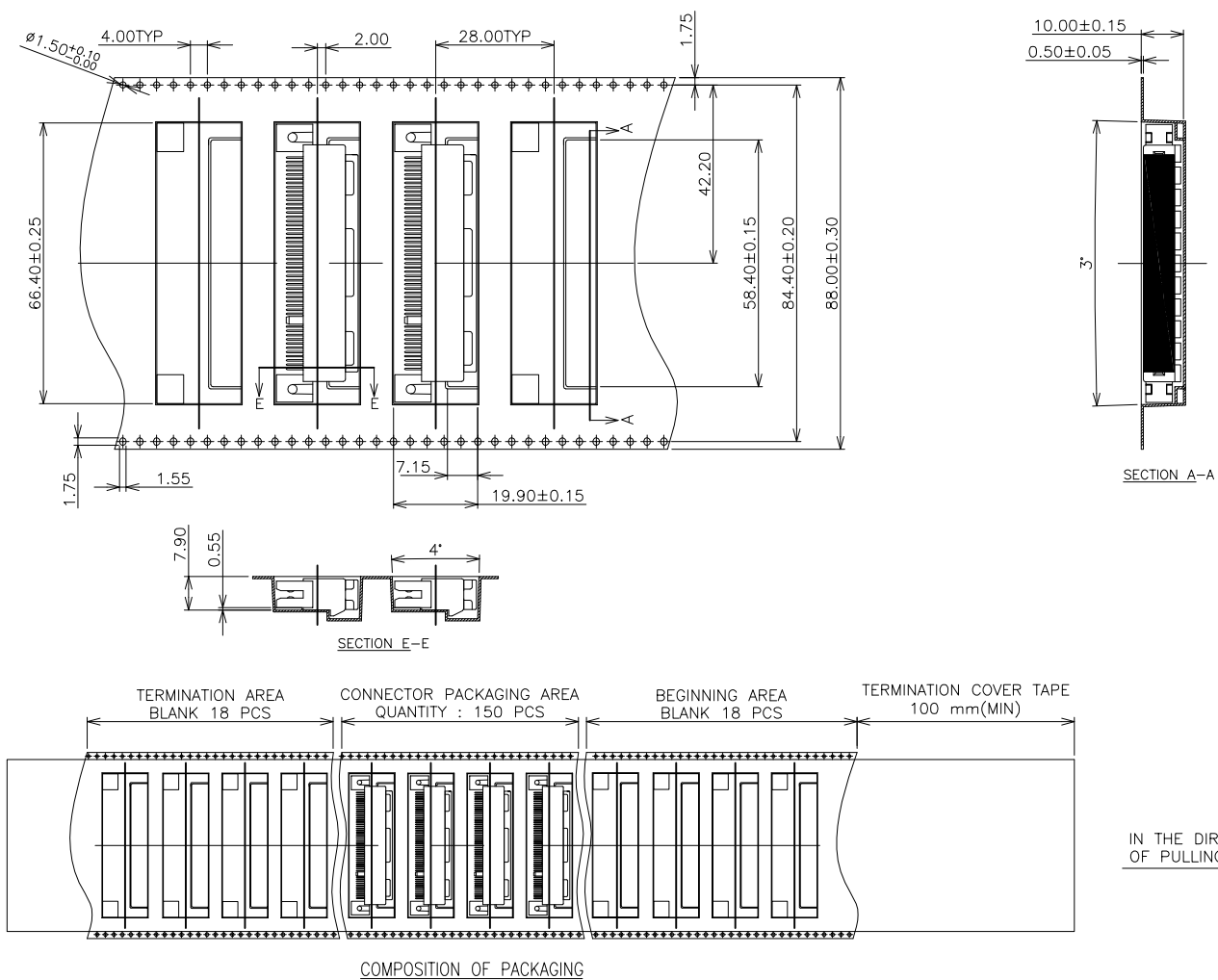
1. REEL MATERIAL : PS, BLACK
2. CARRIER MATERIAL : PS
3. COVER TAPE MATERIAL : PS
4. COVER TAPE REEL STRENGTH : 13"
5. QUANTITY : 150 PCS/REEL
6. Carton : 380(L) \* 380(W) \* 300(H) mm

Part No
10025026-XXXXC(LF)

NO. OF CONTACTS	98
REEL/CARTON	3
PCS/REEL	150
QUANTITY(PCS)	450



mat'l. code	surface	tolerance	projection	product family
-	ASME_Y14.5	ASME_Y14.5	MM	PCI_EXPRESS
lfr	ecn no	dr	date	title
				PCI_EXPRESS_CARD_EDGE_GEN3
				STRADDLE_MOUNT_ASS'Y
				dwg no
				10025026
				type
				CUSTOMER Drawing
sheet index	revision sheet	L	7	



mat'l. code				surface	tolerance	projection	product family		
-				-	ASME_Y14.5		PCI_EXPRESS		
ltr				ecn no	dr	date	title		
				tolerances unless otherwise specified			MM		
				angles	linear		PCI_EXPRESS_CARD_EDGE_GEN3		
							STRADDLE_MOUNT_ASS'Y		
				±2'			scale N/A		
				dr	ZHENHUA_LIU	2016-03-25	dwg no		
				enr	ZHENHUA_LIU	2016-03-25	sheet 7 of 7		
				chr	STONE_LI	2016-03-25	10025026		
				app	PM_ZHENG	2016-03-25	type		
							CUSTOMER Drawing		
sheet	revision	L							
index	sheet	7							