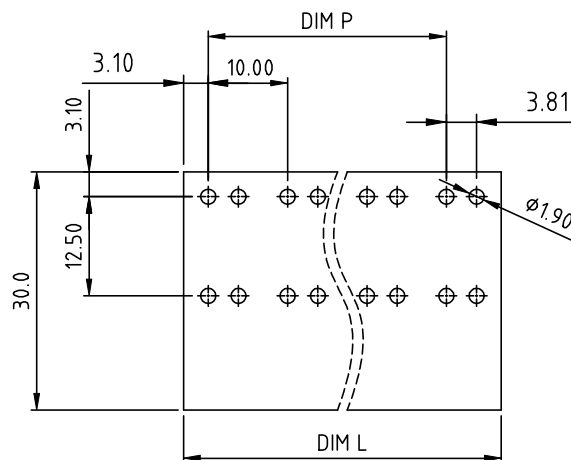
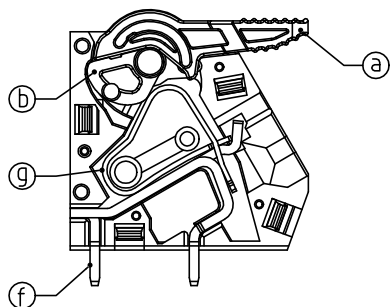
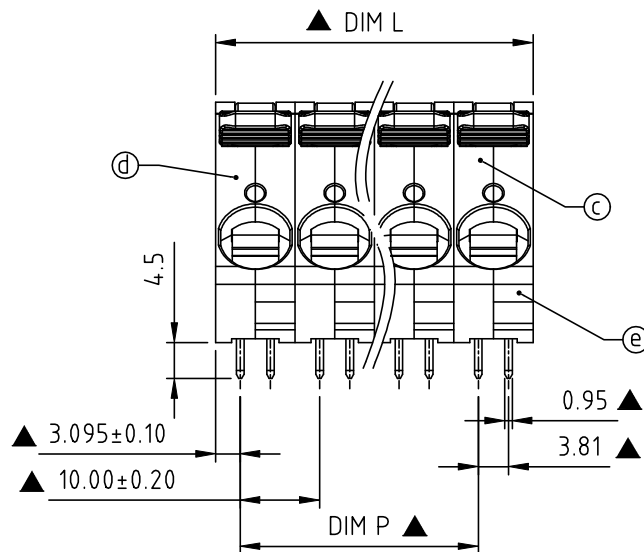
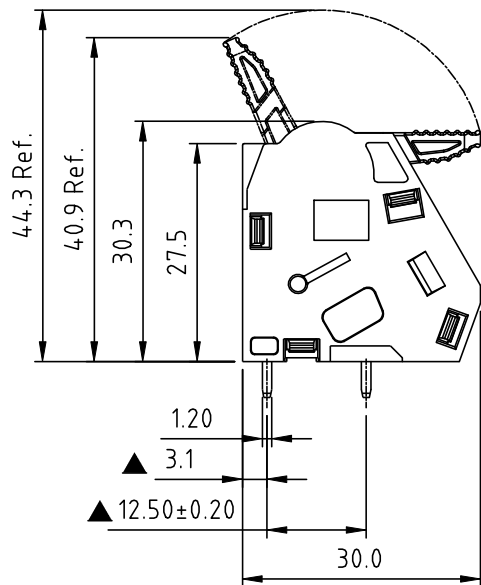


RoHS Compliant

N=NUMBER OF CONTACTS

| DIM   |            | TOL   |       |       |       |        |
|-------|------------|-------|-------|-------|-------|--------|
|       |            | 1P    | 2P    | 3P-4P | 5P-8P | 9P-12P |
| Dim L | N×10.0     | ±0.20 | ±0.40 | ±0.40 | ±0.50 | ±0.60  |
| Dim P | (N-1)×10.0 | /     | ±0.20 | ±0.40 | ±0.50 | ±0.60  |






RECOMMENDED PCB LAYOUT

| REV   | SIGN | DATE       | DESCRIPTION           | APPROVER |
|---|------|------------|-----------------------|----------|
| D   | △    | 2019.09.27 | Modify the Struction  | LENA     |
| E   | △    | 2021.11.01 | Add TUV certification | Rhine    |
| THIS IS CAD DRAWING, DO NOT REVISE MANUALL Y!!! |      |            |                       |          |

Material:

- Item ① Lever: Thermoplastic (UL 94V-0),
- Item ② Cam: Thermoplastic (UL 94V-0),
- Item ③ Middle Body: Thermoplastic (UL 94V-0),
- Item ④ Left side body: Thermoplastic (UL 94V-0),
- Item ⑤ Right side body: Thermoplastic (UL94V-0),
- Item ⑥ Contact: Copper,Matte Tin plated over Nickel plated,
- Item ⑦ Spring clamp: Stainless steel

- △ Electrical: cULus TUV(EN/IEC 60947-7-4)
- Voltage rating: 300 V 400V (III/3) 400V(III/2) 800V(II/2)
  - Current rating: 55A 76A
  - Wire range(AWG): 16-6 (Solid & Stranded)
  - Wire range: 0.75mm<sup>2</sup>-10mm<sup>2</sup>(Flexible) 0.75mm<sup>2</sup>-16mm<sup>2</sup>(Solid & Rigid stranded)
  - Wire strip length: 12-13 mm
  - Withstanding Voltage: 1.6KV 3.1KV
  - Rated impulse Withstanding Voltage: 4KV
  - Operating temperature: -40°C to +115°C
  - Soldering temperature: 260°C±5°C/5 Sec
  - Safety Approval:  
  - Critical dimension: 
  - Part No:

NZ XX 0 0 X B XXXX G

No. OF POLES  
01 1 Pole  
02 2 Poles  
...  
12 12 Poles

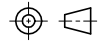
Body Color  
0 Black (RAL9005)  
2 Red (RAL3001/D)  
3 Orange(RAL2011/P)  
4 Yellow(RAL1018/A)  
5 Green(RAL6018/T)  
6 Blue (RAL5015/A)  
8 Grey(RAL7004/P)  
9 White(RAL1102)  
C Multiple colors

RoHS compliant  
(lead<4%)  
In copper Alloy  
0000: "@" Logo (Standard)  
000A: "ANYTEK" Mark

**Amphenol**  
**ANYTEK**

**CUSTOMER COPY**

ALL RIGHTS RESERVED. REPRODUCTION OR ISSUE TO THIRD PARTIES IN ANY FORM WHATEVER IS NOT PERMITTED WITHOUT WRITTEN AUTHORITY FROM THE PROPRIETOR. PROPERTY OF ANYTEK TECHNOLOGY CO., LTD

|          |  |                     |                     |   |   |
|----------|--|---------------------|---------------------|---|---|
| TITLE    | NZ 10.0mm Pitch, Without Jumper Slot Series (1P-12P) |                     |                     |   |   |
| PART NO. | NZ XX00XBXXXXG                                       |                     | DWG NO.             | 8NZ0002   |   |
| APPROVED | CHECKED  | DESIGNED            | DRAWN               | CUST NO.  | Tolerance                                     |
|          |  | Rhine<br>2021.11.01 | Rhine<br>2021.11.01 |  | X. ±0.50<br>X.X ±0.30<br>X.XX ±0.10<br>X* ±1° |
|          |  |                     |                     | SHEET: 01/01  | UNIT: mm<br>SCALE: 1:1<br>REV.: E             |