

Industrial Ethernet Switch - FL SWITCH SFNB 4TX/FX



2891027

<https://www.phoenixcontact.com/us/products/2891027>

Please be informed that the data shown in this PDF document is generated from our Online Catalog. Please find the complete data in the user documentation. Our General Terms of Use for Downloads are valid.



Ethernet switch, 4 TP RJ45 ports, 1 FO port, 100 Mbps full duplex in SC-D format, automatic detection of data transmission speed of 10 or 100 Mbps (RJ45), autocrossing function

Your advantages

- RJ45 ports support a transmission speed of 10/100 Mbps
- Fiber-optic ports support 100 Mbps
- Local diagnostic indicators with LEDs
- Auto negotiation and autocrossing detection simplifies installation and setup

Industrial Ethernet Switch - FL SWITCH SFNB 4TX/FX



2891027

<https://www.phoenixcontact.com/us/products/2891027>

Commercial Data

Item number	2891027
Packing unit	1 pc
Minimum order quantity	1 pc
Sales Key	C23
Product Key	DNN113
Catalog Page	Page 289 (C-6-2019)
GTIN	4046356588089
Weight per Piece (including packing)	276.2 g
Weight per Piece (excluding packing)	270 g
Customs tariff number	85176200
Country of origin	TW

Industrial Ethernet Switch - FL SWITCH SFNB 4TX/FX



2891027

<https://www.phoenixcontact.com/us/products/2891027>

Technical Data

Dimensions

Width	28 mm
Height	110 mm
Depth	70 mm

Notes

Utilization restriction

EMC note	EMC: class A product, see manufacturer's declaration in the download area
----------	---

Material specifications

Housing material	Aluminum
------------------	----------

Mounting

Mounting type	DIN rail
---------------	----------

Interfaces

Ethernet (RJ45)

Connection method	RJ45
Note on the connection method	Auto negotiation and autocrossing
Transmission speed	10/100 Mbps
Transmission physics	Ethernet in RJ45 twisted pair
Transmission length	100 m (per segment)
Signal LEDs	Data receive, link status
No. of channels	4 (RJ45 ports)

Fiber optic interface

Connection method	SC
Transmission speed	100 Mbps (full duplex)
Transmission physics	multi-mode fiberglass
Transmission length	12.1 km (fiberglass with F-G 62.5/125 0.7 dB/km F1000)
Wavelength	1300 nm
No. of channels	1 (SC multi-mode)

Product properties

Type	Block design
Product type	Switch
MTTF	144.5 Years (MIL-HDBK-217F standard, temperature 25°C, operating cycle 100%)

Switch functions

Basic functions	Unmanaged switch / auto negotiation, complies with IEEE 802.3, store and forward switching mode
-----------------	---

Industrial Ethernet Switch - FL SWITCH SFNB 4TX/FX



2891027

<https://www.phoenixcontact.com/us/products/2891027>

Status and diagnostic indicators	LEDs: U _S , link and activity per port
Additional functions	Autonegotiation

Security functions

Basic functions	Unmanaged switch / auto negotiation, complies with IEEE 802.3, store and forward switching mode
-----------------	---

Electrical properties

Local diagnostics	US Supply voltage Green LED
	LNK/ACT Link status/data transmission Green LED
	100 Data transmission speed Yellow LED
Maximum power dissipation for nominal condition	4.44 W
Transmission medium	Copper

Supply

Supply voltage	24 V DC
Supply voltage range	12 V DC ... 48 V DC
Power supply connection	Via COMBICON, max. conductor cross section 2.5 mm ²
Residual ripple	3.6 V _{PP} (within the permitted voltage range)
Typical current consumption	185 mA (at U _S = 24 V DC)

Connection data

Connection method	Screw connection
Conductor cross section, rigid	0.2 mm ² ... 2.5 mm ²
Stripping length	7 mm

Ambient conditions

Degree of protection	IP20
Ambient temperature (operation)	0 °C ... 60 °C
Ambient temperature (storage/transport)	-20 °C ... 85 °C
Permissible humidity (operation)	5 % ... 95 % (non-condensing)
Permissible humidity (storage/transport)	5 % ... 95 % (non-condensing)
Air pressure (operation)	86 kPa ... 108 kPa (up to 1500 m above sea level)
Air pressure (storage/transport)	66 kPa ... 108 kPa (up to 3500 m above sea level)

Approval data

Conformity/Approvals

UL, USA / Canada	Class I, Div. 2, Groups A, B, C, D
------------------	------------------------------------

EMC data

Electromagnetic compatibility	Conformance with EMC Directive 2004/108/EC
Noise emission	EN 61000-6-4
Noise immunity	EN 61000-6-2

LED signaling

Industrial Ethernet Switch - FL SWITCH SFNB 4TX/FX



2891027

<https://www.phoenixcontact.com/us/products/2891027>

Status display	LEDs: U _S , link and activity per port
----------------	---

Industrial Ethernet Switch - FL SWITCH SFNB 4TX/FX



2891027

<https://www.phoenixcontact.com/us/products/2891027>

Approvals

	IECEE CB Scheme			
	Approval ID: DK-88783-M1-UL			
	Nominal Voltage U _N	Nominal Current I _N	Cross Section AWG	Cross Section mm ²
			-	-

	EAC
	Approval ID: RU*-DE.*.B.00741/19

	UL Listed
	Approval ID: FILE E 140324

	cUL Listed
	Approval ID: FILE E 140324

	KC
	Approval ID: KCC-REI-PCK-FL289102

	cUL Listed
	Approval ID: FILE E 238705

	UL Listed
	Approval ID: FILE E 238705

	cUL Listed
	Approval ID: FILE E 199827

	UL Listed
	Approval ID: FILE E 199827

cULus Listed

Industrial Ethernet Switch - FL SWITCH SFNB 4TX/FX



2891027

<https://www.phoenixcontact.com/us/products/2891027>

Classifications

ECLASS

ECLASS-9.0	19170106
ECLASS-10.0.1	19170402
ECLASS-11.0	19170402

ETIM

ETIM 8.0	EC000734
----------	----------

UNSPSC

UNSPSC 21.0	43222600
-------------	----------

Environmental Product Compliance

REACH SVHC	Lead 7439-92-1
China RoHS	Environmentally Friendly Use Period = 10;
	For information on hazardous substances, refer to the manufacturer's declaration available under "Downloads"

2891027

<https://www.phoenixcontact.com/us/products/2891027>

Accessories

PCB connector

PCB connector - MSTB 2,5/ 3-ST - 1754465

<https://www.phoenixcontact.com/us/products/1754465>



PCB connector, nominal cross section: 2.5 mm², color: green, nominal current: 12 A, rated voltage (III/2): 320 V, contact surface: Tin, type of contact: Female connector, number of potentials: 3, number of rows: 1, number of positions: 3, number of connections: 3, product range: MSTB 2,5/...-ST, pitch: 5 mm, connection method: Screw connection with tension sleeve, screw head form: L Slotted, conductor/PCB connection direction: 0 °, locking clip: - Locking clip, plug-in system: COMBICON MSTB 2,5, locking: without, mounting: without, type of packaging: packed in cardboard

Surge protection device

Surge protection device - DT-LAN-CAT.6+ - 2881007

<https://www.phoenixcontact.com/us/products/2881007>



Surge protection in accordance with Class E_A (CAT6_A), for Gigabit Ethernet (up to 10 Gbps), token ring, FDDI/CDDI, ISDN, and DS1. Suitable for Power over Ethernet (PoE++ / 4PPoE) "Mode A" and "Mode B". RJ45 attachment plug with separate grounding cable and ground connection snap-on foot for NS 35 DIN rails.

Industrial Ethernet Switch - FL SWITCH SFNB 4TX/FX



2891027

<https://www.phoenixcontact.com/us/products/2891027>

Port Guard Security Element

Port Guard Security Element - FL SEC PAC 4TX - 2832865

<https://www.phoenixcontact.com/us/products/2832865>

Layer1 security elements for four RJ45 network connections for use with patch boxes and panels



DIN rail adapter

DIN rail adapter - FL DIN RA - 2891053

<https://www.phoenixcontact.com/us/products/2891053>

The FL DIN RA is installed in a standard, 19-inch rack (EIA-310-D, IEC 60297-3-100) to allow DIN rail mounted equipment to be rack mounted.



Industrial Ethernet Switch - FL SWITCH SFNB 4TX/FX



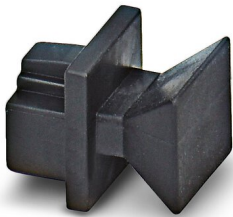
2891027

<https://www.phoenixcontact.com/us/products/2891027>

Dust protection

Dust protection - FL RJ45 PROTECT CAP - 2832991

<https://www.phoenixcontact.com/us/products/2832991>

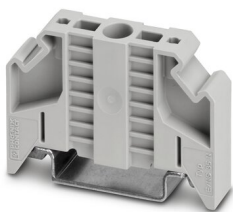


Dust protection caps for RJ45 socket

End clamp

End clamp - E/NS 35 N - 0800886

<https://www.phoenixcontact.com/us/products/0800886>



End clamp, width: 9.5 mm, color: gray

Industrial Ethernet Switch - FL SWITCH SFNB 4TX/FX



2891027

<https://www.phoenixcontact.com/us/products/2891027>

Patch cable

Patch cable - FL CAT5 PATCH 0,5 - 2832263

<https://www.phoenixcontact.com/us/products/2832263>



Patch cable, CAT5, assembled, 0.5 m

Patch cable

Patch cable - FL CAT5 PATCH 1,0 - 2832276

<https://www.phoenixcontact.com/us/products/2832276>



Patch cable, CAT5, assembled, 1 m

Industrial Ethernet Switch - FL SWITCH SFNB 4TX/FX



2891027

<https://www.phoenixcontact.com/us/products/2891027>

Patch cable

Patch cable - FL CAT5 PATCH 2,0 - 2832289

<https://www.phoenixcontact.com/us/products/2832289>

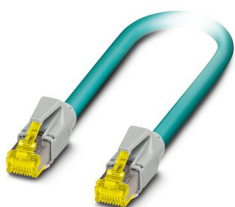


Patch cable, CAT5, assembled, 2 m

Patch cable

Patch cable - NBC-R4AC-R4AC-IE8A/.../... - 1411854

<https://www.phoenixcontact.com/us/products/1411854>



Patch cable, degree of protection: IP20, number of positions: 8, 10 Gbps, CAT6_A, cable outlet: straight, Ethernet

Industrial Ethernet Switch - FL SWITCH SFNB 4TX/FX



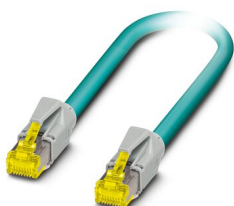
2891027

<https://www.phoenixcontact.com/us/products/2891027>

Patch cable

Patch cable - NBC-R4AC/10G-R4AC/10G-94F/2,0 - 1408360

<https://www.phoenixcontact.com/us/products/1408360>

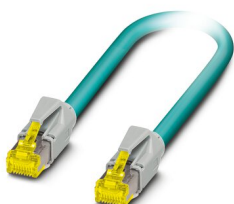


Patch cable, CAT6_A, 4-pair, shielded, connection not crossed (line), assembled at both ends with RJ45/IP20 connectors, outer sheath material: PUR, length: 2.0 m

Patch cable

Patch cable - NBC-R4AC/10G-R4AC/10G-94F/3,0 - 1408365

<https://www.phoenixcontact.com/us/products/1408365>



Patch cable, CAT6_A, 4-pair, shielded, connection not crossed (line), assembled at both ends with RJ45/IP20 connectors, outer sheath material: PUR, length: 3.0 m

Industrial Ethernet Switch - FL SWITCH SFNB 4TX/FX



2891027

<https://www.phoenixcontact.com/us/products/2891027>

Patch cable

Patch cable - NBC-R4AC/1,0-93B/R4AC - 1408968

<https://www.phoenixcontact.com/us/products/1408968>



Patch cable, degree of protection: IP20, cable length: 1 m, number of positions: 4, 100 Mbps, CAT5, material: PA 6.6, PROFINET

Patch cable

Patch cable - NBC-R4AC/2,0-93B/R4AC - 1408969

<https://www.phoenixcontact.com/us/products/1408969>



Patch cable, degree of protection: IP20, cable length: 2 m, number of positions: 4, 100 Mbps, CAT5, material: PA 6.6, PROFINET

Industrial Ethernet Switch - FL SWITCH SFNB 4TX/FX



2891027

<https://www.phoenixcontact.com/us/products/2891027>

Patch cable

Patch cable - NBC-R4AC/5,0-93B/R4AC - 1408970

<https://www.phoenixcontact.com/us/products/1408970>

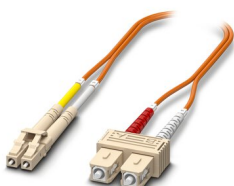


Patch cable, degree of protection: IP20, cable length: 5 m, number of positions: 4, 100 Mbps, CAT5, material: PA 6.6, PROFINET

FO patch cable

FO patch cable - FOC-LC:PA-SC:PA-OM2:D01/1 - 1115607

<https://www.phoenixcontact.com/us/products/1115607>



Multi-mode OM2 duplex jumper, LC-SC, UPC polishing, length 1 m

Industrial Ethernet Switch - FL SWITCH SFNB 4TX/FX



2891027

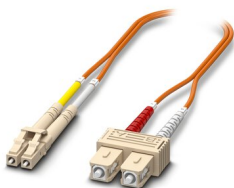
<https://www.phoenixcontact.com/us/products/2891027>

FO patch cable

FO patch cable - FOC-LC:PA-SC:PA-OM2:D01/2 - 1115605

<https://www.phoenixcontact.com/us/products/1115605>

Multi-mode OM2 duplex jumper, LC-SC, UPC polishing, length 2 m

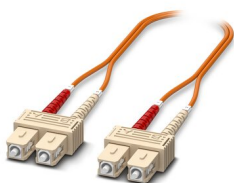


FO patch cable

FO patch cable - FOC-SC:PA-SC:PA-OM2:D01/1 - 1115536

<https://www.phoenixcontact.com/us/products/1115536>

Multi-mode OM2 duplex jumper, SC-SC, UPC polishing, length 1 m



Industrial Ethernet Switch - FL SWITCH SFNB 4TX/FX



2891027

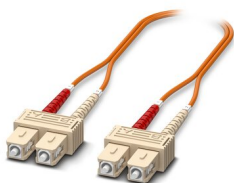
<https://www.phoenixcontact.com/us/products/2891027>

FO patch cable

FO patch cable - FOC-SC:PA-SC:PA-OM2:D01/2 - 1115535

<https://www.phoenixcontact.com/us/products/1115535>

Multi-mode OM2 duplex jumper, SC-SC, UPC polishing, length 2 m

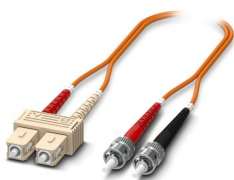


FO patch cable

FO patch cable - FOC-ST:PA-SC:PA-OM2:D01/1 - 1115574

<https://www.phoenixcontact.com/us/products/1115574>

Multi-mode OM2 duplex jumper, ST-SC, UPC polishing, length 1 m



Industrial Ethernet Switch - FL SWITCH SFNB 4TX/FX



2891027

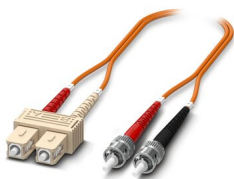
<https://www.phoenixcontact.com/us/products/2891027>

FO patch cable

FO patch cable - FOC-ST:PA-SC:PA-OM2:D01/2 - 1115573

<https://www.phoenixcontact.com/us/products/1115573>

Multi-mode OM2 duplex jumper, ST-SC, UPC polishing, length 2 m

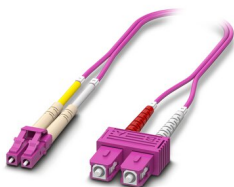


FO patch cable

FO patch cable - FOC-LC:PA-SC:PA-OM4:D01/1 - 1115601

<https://www.phoenixcontact.com/us/products/1115601>

Multi-mode OM4 duplex jumper, LC-SC, UPC polishing, length 1 m



Industrial Ethernet Switch - FL SWITCH SFNB 4TX/FX



2891027

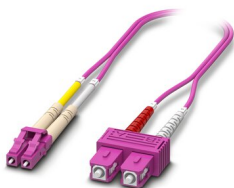
<https://www.phoenixcontact.com/us/products/2891027>

FO patch cable

FO patch cable - FOC-LC:PA-SC:PA-OM4:D01/2 - 1115600

<https://www.phoenixcontact.com/us/products/1115600>

Multi-mode OM4 duplex jumper, LC-SC, UPC polishing, length 2 m

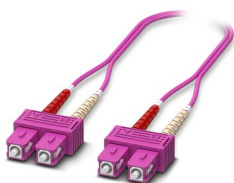


FO patch cable

FO patch cable - FOC-SC:PA-SC:PA-OM4:D01/1 - 1115424

<https://www.phoenixcontact.com/us/products/1115424>

Multi-mode OM4 duplex jumper, SC-SC, UPC polishing, length 1 m



Industrial Ethernet Switch - FL SWITCH SFNB 4TX/FX



2891027

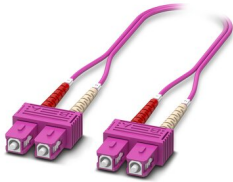
<https://www.phoenixcontact.com/us/products/2891027>

FO patch cable

FO patch cable - FOC-SC:PA-SC:PA-OM4:D01/2 - 1115423

<https://www.phoenixcontact.com/us/products/1115423>

Multi-mode OM4 duplex jumper, SC-SC, UPC polishing, length 2 m



Phoenix Contact 2022 © - all rights reserved

<https://www.phoenixcontact.com>

Phoenix Contact USA
586 Fulling Mill Road
Middletown, PA 17057, United States
(+717) 944-1300
info@phoenixcon.com