

General Specifications

Toggles

Rockers
B

Pushbuttons

Illuminated PB

Programmable

Keylocks

Rotaries

Slides

Tactiles

Tilt

Touch

Indicators

Accessories

Supplement

Electrical Capacity (Resistive Load)

Power Level: 9A @ 125V AC

Other Ratings

Contact Resistance: 20 milliohms maximum**Insulation Resistance:** 500 megohms minimum @ 500V DC**Dielectric Strength:** 1,500V AC minimum between contacts for 1 minute minimum;
3,000V AC minimum between contacts & case for 1 minute minimum**Mechanical Life:** 30,000 operations minimum**Electrical Life:** 10,000 operations minimum**Nominal Operating Force:** 10.0N**Angle of Throw:** 30°

Materials & Finishes

Rocker: Polycarbonate**Housing:** Polyamide**Movable Contact:** Beryllium copper with silver plating**Movable Contacts:** Silver alloy**Stationary Contacts:** Silver alloy**Switch Terminals:** Brass with silver plating**Lamp Terminals:** Brass with silver plating

Environmental Data

Operating Temp Range: -20°C through +85°C (-4°F through +185°F)**Humidity:** 90 ~ 95% humidity for 96 hours @ 40°C (104°F)**Vibration:** 10 ~ 55Hz with peak-to-peak amplitude of 0.75mm traversing the frequency range
& returning in 1 minute; 3 right angled directions for 2 hours**Shock:** 50G (490m/s²) acceleration (tested in 6 right angled directions, with 5 shocks in each direction)

Standards & Certifications

UL: File No. E44145
9A @ 125V AC
Markings on case are standard.**CSA:** File No. 0701166_0_000
9A @ 125V AC
Markings on case are standard.

Distinctive Characteristics

Full face, Neon illumination in choice of red, amber, or green.

Neon lamp suited to 125V AC applications.

9-amp electrical capacity in compact body.

Built-in resistor for direct connection to 125V AC power source.

Low cost molded rocker.

Front panel, snap-in mounting assures labor-saving installation.

Single-break, snap-acting contact mechanism gives smooth actuation and audible feedback.

Quick-make, quick-break characteristic limits arcing and prolongs electrical life.

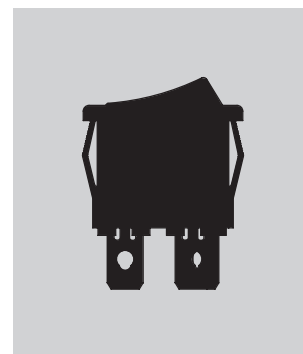
Stable stationary contact construction for high reliability.

Offset terminal alignment gives outstanding insulation resistance and dielectric strength.

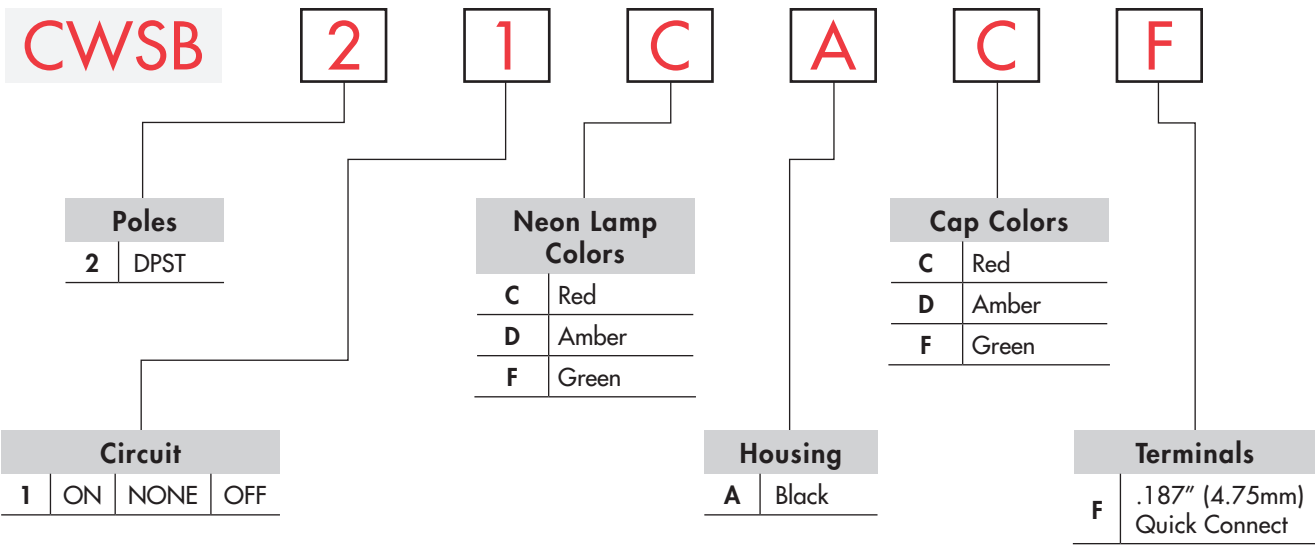
Quick connect terminals (.187"/4.75mm) can be used with connectors.



Actual Size



TYPICAL SWITCH ORDERING EXAMPLE

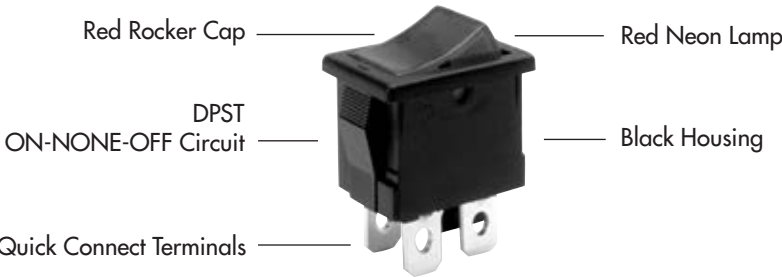


IMPORTANT:

Switches are supplied with UL & CSA markings on the case. Specific models & ratings noted on the General Specifications page.

DESCRIPTION FOR TYPICAL ORDERING EXAMPLE

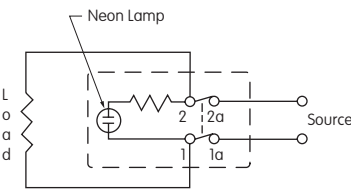
CWSB21CACF



POLE & CIRCUIT

		Rocker Position			Connected Terminals			Throw & Switch/Lamp Schematic
Pole	Model	Down	Center	Up	Down	Center	Up	Note: Terminal numbers "1a" & "2a" are actually on the switch.
DP	CWSB21	ON	NONE	OFF	1-1a 2-2a	OPEN	OPEN	DPST

NEON LAMP COLORS & SPECIFICATIONS

<p>The Neon lamp is factory assembled and not available separately. The lamp circuit is synchronous to switching circuit.</p> <p>The electrical specifications shown are determined at a basic temperature of 25°C.</p> <p>Values for the built-in resistors are given in the accompanying table.</p>		Colors		
		<div>C</div> <div>Red</div>	<div>D</div> <div>Amber</div>	<div>F</div> <div>Green</div>
	Voltage	V	125V AC	125V AC
	Internal Series Resistance		33K ohms	33K ohms
	Current	I	1.4mA	1.4mA
	Endurance	Hours	15,000	8,000

HOUSING

A

 Black Housing with Snap-in Mounting

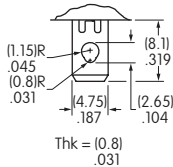
On Off (I O) symbols are molded on the bezel.



TERMINALS

F

 .187" (4.75mm) Quick Connect



CAP COLOR CODES

Cap Colors Available

C

 Red

D

 Amber

F

 Green

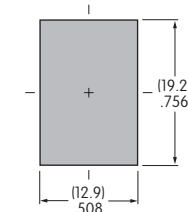
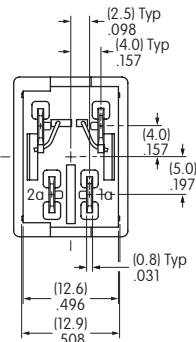
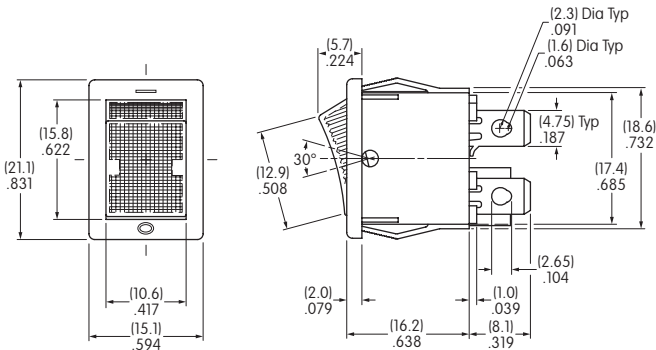


Caps are factory assembled and are not available separately.

TYPICAL SWITCH DIMENSIONS

Double Pole

Neon Illuminated



Panel Thickness
.030" ~ .079"
(0.75mm ~ 2.0mm)



CWSB21CACF