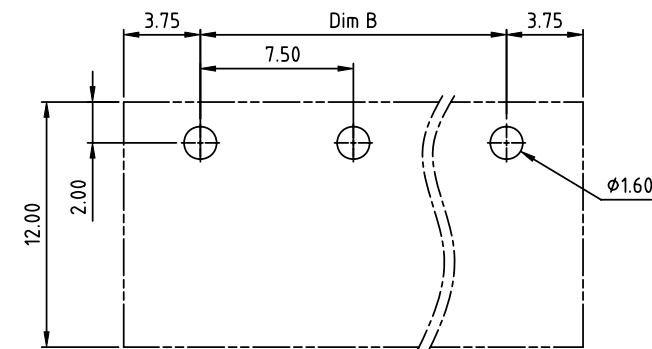
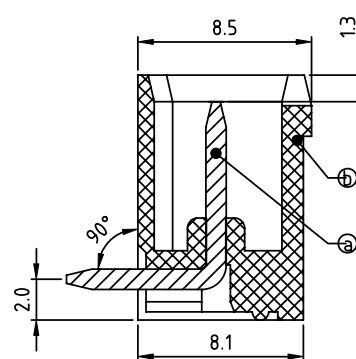
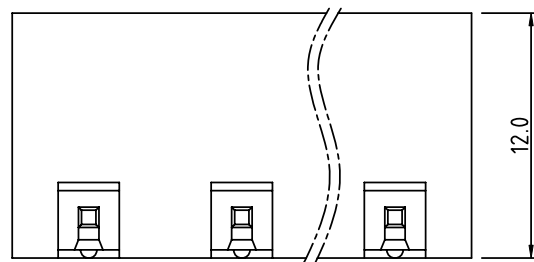
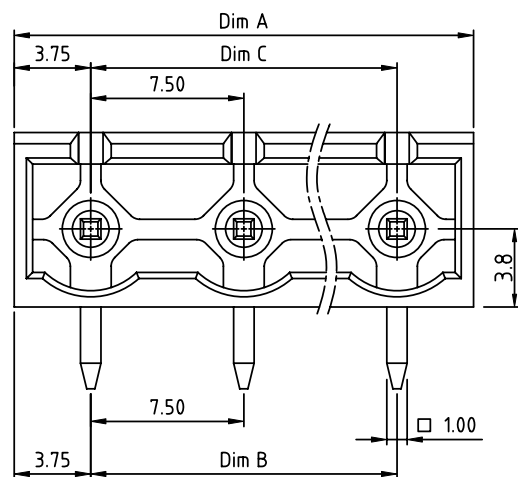


PRODUCT NUMBER	PITCH
0QxxA1x100J0G	7.50 mm

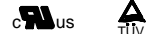


RECOMMENDED P.C.B LAYOUT
TOP VIEW

Material:

- Item ③ Male contact pin: Copper Tin plated
- Item ⑥ Terminal housing: Thermoplastic (UL94V-0)

- Electrical:
- Voltage rating: 300V 750V
 - Current rating: 20A 15A
 - Withstanding Voltage: 1.6 KV 6KV
 - Operating temperature: -40°C to +115°C
 - Soldering temperature: 260°C±5°C/5 Sec
 - Safety Approval:

cULus TUV


DIMENSION

Dim A	NX7.5
Dim B&C	(N-1)X7.5
N= NUMBER OF POLES	
Poles	Tolerance
2P-6P	±0.20
7P-12P	±0.30
13P-16P	±0.40

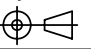
PART NO.: 0Q xx A 1 x 1 00J0 G

No. of poles
 02 2 poles
 03 3 poles

 16 16 poles

Body Color
 0 Black (RAL9005)
 2 Red (RAL3001/D)
 3 Orange(RAL2011/P)
 4 Yellow(RAL1018/A)
 5 Green(RAL6018/T)
 6 Blue (RAL5015/A)
 8 Grey(RAL7035/D)
 9 White(RAL1102)
 C Green(RAL6018/U)

RoHS compliant
 (lead<4%)
 In copper Alloy

mat'l. code				surface ASME Y14.5	tolerance ASME Y14.5	projection 	product family TERMINAL BLOCK
ltr	ecn	no	dr	date	tolerances unless otherwise specified	MM	title
					angles X±0.5		TERMINAL BLOCK
					Ø X.X±0.3		PLUGGABLE SOCKET,CLOSE,RIGHT ANGLE
					X°±1°	scale	dwg no
					dr HANKE FENG 040414		sheet 1 of 1 size
					enrg HANKE FENG 040414		0QxxA1x100J0G A4
					chr SHI JUN 040414		type
					appd SHI JUN 040414		CUSTOMER Drawing
sheet index	revision	sheet	A	1			