

# BD Industrial HRC fuse links



## Product description

Eaton's Bussmann® series BD British standard fuse links are specifically designed for the protection of general industrial applications e.g. power distribution, cable protection, motor protection.

## Standard features

- Good peak let-through current limitation
- 1:1:6 Selective coordination ratio between 'minor' and 'major' fuse
- gG characteristics for cable protection and general purpose applications
- Power loss values within the limits of IEC 60269-2



*Powering Business Worldwide*

**Catalogue symbol:**

- BD(Amps)

**Technical data:**

- Rated voltage: 500 V a.c./250 V d.c.
- Rated current: 40 to 63 A
- Breaking capacity: 80 kA a.c. / 40 kA d.c.
- Breaking range and utilisation category: gG

**Standards/approvals:**

- BS88-1
- IEC 60269-1
- Suitable for use in RoHS compliant applications

**Fuse holder (sold separately):**

- RS200H (Red Spot)

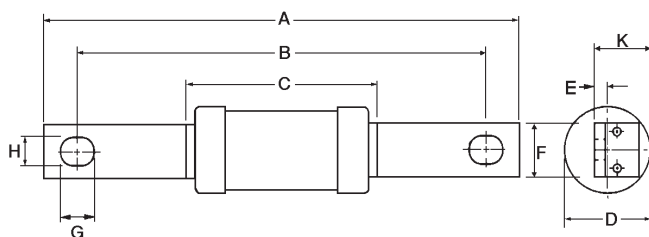
**Packaging:**

- MOQ: 20

**Table 1. Technical data**

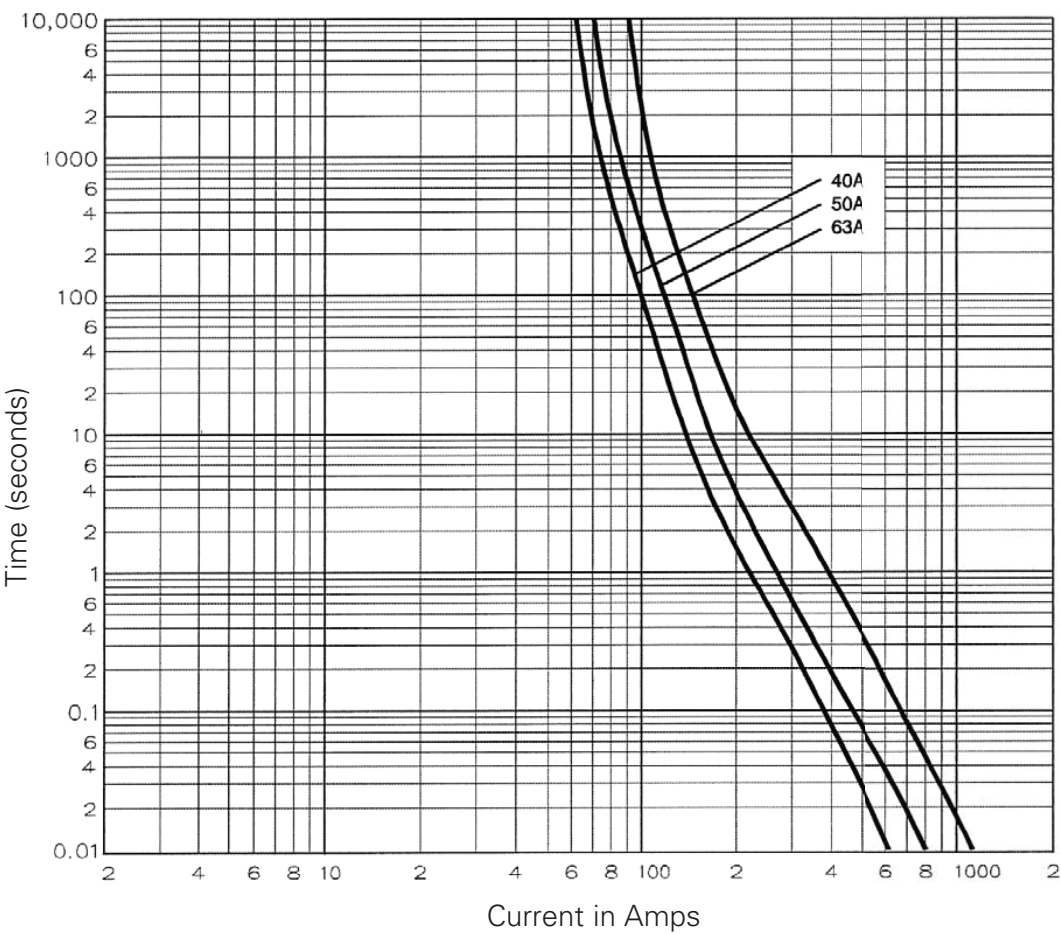
Catalogue number	Rated voltage	Rated current (Amps)	Energy integrals I <sup>2</sup> t (A <sup>2</sup> S)			Watts loss (W)	Product class	Weight (grams)
			Pre-arcing	Total at 415 V a.c.	Total at 550 V a.c.			
BD40	500 V a.c. / 250 V d.c.	40	1400	3600	5000	4.7	gG	60
BD50	500 V a.c. / 250 V d.c.	50	3000	8050	11,250	4.9	gG	60
BD63	500 V a.c. / 250 V d.c.	63	6700	18,850	25,100	5.6	gG	60

**Dimensions - mm**



Catalogue numbers	A	B	C	D	E	F	G	H	K
BD40-63	128.5	111	55	21	1.4	14.2	11.8	8.7	11.2

Time current curve



Changes to the products, to the information contained in this document, and to prices are reserved; so are errors and omissions. Only order confirmations and technical documentation by Eaton is binding. Photos and pictures also do not warrant a specific layout or functionality. Their use in whatever form is subject to prior approval by Eaton. The same applies to Trademarks (especially Eaton, Moeller, and Cutler-Hammer). The Terms and Conditions of Eaton apply, as referenced on Eaton Internet pages and Eaton order confirmations.

**Eaton**  
EMEA Headquarters  
Route de la Longeraie 7  
1110 Morges, Switzerland

Eaton Electrical Products Limited  
Melton Road  
Burton-on-the-Wolds  
Leicestershire, LE12 5TH  
United Kingdom

© 2017 Eaton  
All Rights Reserved  
PDF Only  
Publication No. 4114  
October 2017



Eaton is a registered trademark.  
All other trademarks are property of their respective owners.