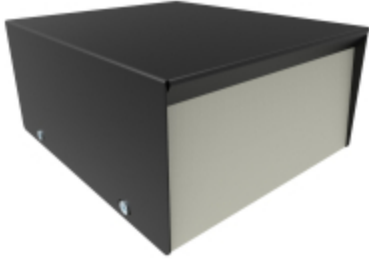


Instrument Enclosure *1454 Series*

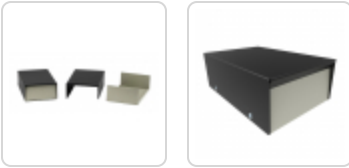
Key Features:



- Made of strong, economical 20 gauge steel.
- Rugged powder coat finish: beige panels with textured black covers.
- Choice of sloping or vertical front panels by reversing case.
- 6-32 Philips nickel plated screws and self-adhesive rubber feet included.
- Replacement screws: part number **1421J6** (pack of 6x #6-32 Philips head screws).
- Replacement rubber feet: **1421T2** (pack of 24x black rubber feet).

Accessories

- Sheet Metal Screws



Enclosures

Part Number	Width	Depth	Height
1454C	4.00	2.50	2.00
1454J	4.00	3.00	4.00
1454M	4.00	3.00	6.00
1454E	4.00	5.00	2.00
1454F	4.00	6.00	3.00
1454R	5.00	5.00	7.50
1454L	5.00	6.00	4.00
1454H	5.00	7.50	2.50
1454D	5.88	4.00	2.12
1454DD	5.88	5.19	2.75
1454G	6.00	2.50	2.00
1454K	8.00	3.50	2.50
1454N	8.25	6.00	3.00
1454P	10.00	5.00	3.50
1454S	10.00	6.00	3.00
1454W	12.00	8.00	3.00

Tags: instrument enclosure, steel instrument

Data subject to change without notice.

© 2026. Hammond Manufacturing Ltd. All rights reserved.