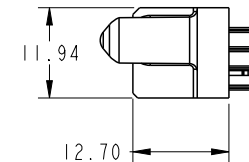
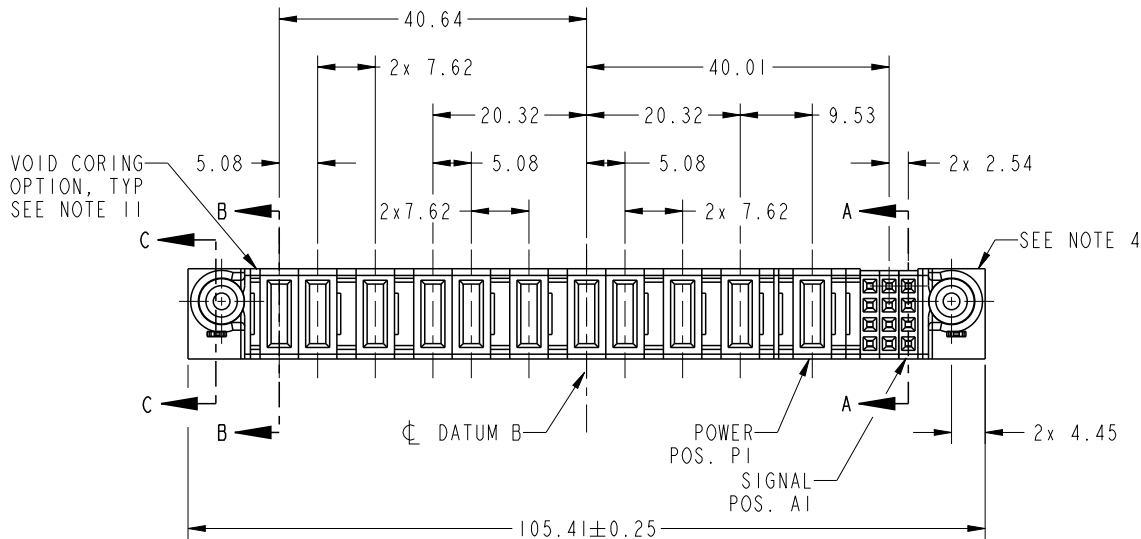




Copyright FCI.

PRODUCT NO.	ROW S	POWER											SIGNAL				
		E2	P11	P10	P9	P8	P7	P6	P5	P4	P3	P2	P1	3	2	1	E1
51940-474-- NOTE: 3	D C B A		PA	PA	X	PA	PA	X	PA	PA	X	PA	PA				



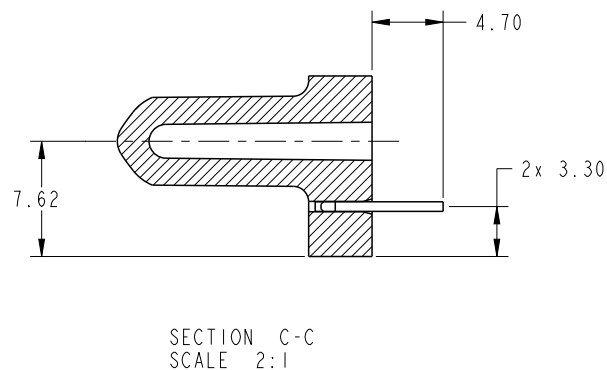
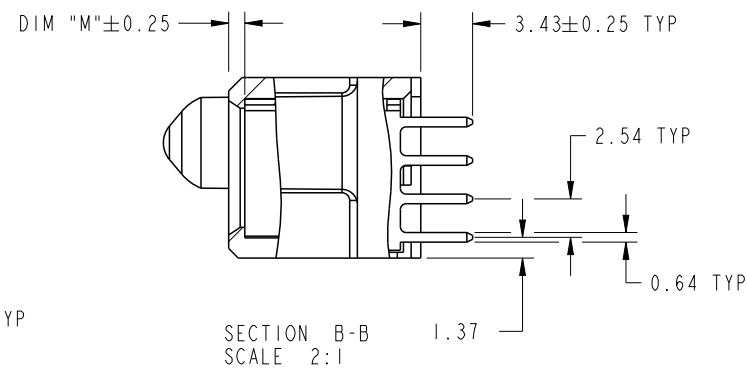
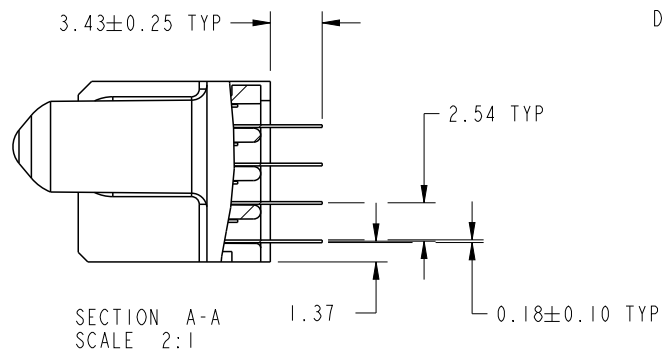
CODE	DIM "M" MATING LENGTH	CONTACT TYPE
E	[N/A]	SIGNAL
PA	[1.07]	POWER
HA	[N/A]	HOLD-DOWN
X	OMITTED	OMITTED

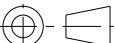


spec ref		*	dr		Luo Weller	2013/01/25	projection 	MM 	size	A4	scale	1:1		
tolerance std	TOLERANCES UNLESS OTHERWISE SPECIFIED		eng		Luo Weller	2013/02/24			ecn no	-				
			chr		-	-			rel level			Released		
SEE NOTE				appr		Pei-Ming Zheng	2013/02/24	product family		PwrBlade				
surface ✓	linear	0.X	±0.5		title	12S+3ACP+2DCP+1ACP+2DCP+1ACP+2DCP VERTICAL SOLDER RECEPT				dwg no	51940-474		rev	A
		0.XX	±0.25											
		0.XXX	±0.1											
	angular	0°	±2°	www.fci.com	cat. no.	*	Product - Customer Drw		sheet 1 of 4					

PrintE File - REV C - 2009-06-09

PRODUCT NUMBER

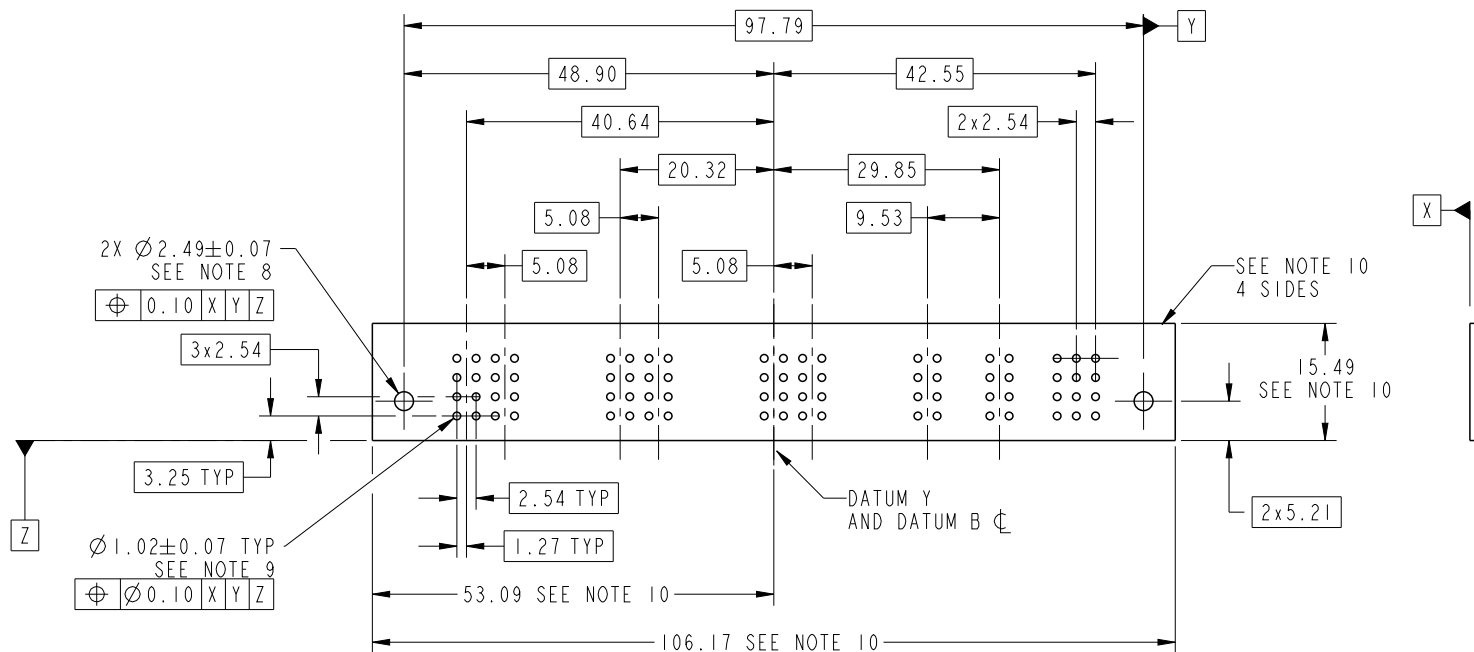
51940-474__
NOTE: 3



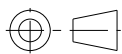
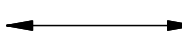

dr	Luo Weller	2013/01/25	<div>projection</div> <div></div>	<div>MM</div> <div></div>	size	A4	scale	1:1
eng	Luo Weller	2013/02/24			ecn no	-		
chr	-	-			rel level	Released		
appr	Pei-Ming Zheng	2013/02/24	product family		PwrBlade			
<div></div>		title			12S+3ACP+2DCP+1ACP+2DCP+1ACP+2DCP		rev	
			VERTICAL SOLDER RECEPT			A		
www.fci.com		cat. no.			*	Product - Customer Drw		sheet 2 of 4

PRODUCT NUMBER

51940-474--
NOTE: 3



RECOMMENDED PCB LAYOUT

dr	Luo Weller	2013/01/25	<div>projection</div> <div></div>	<div>MM</div> <div></div>	size	A4	scale	1:1	
eng	Luo Weller	2013/02/24			ecn no -				
chr	-	-							
appr	Pei-Ming Zheng	2013/02/24	product family		PwrBlade	rel level		Released	
	title 12S+3ACP+2DCP+1ACP+2DCP+1ACP+2DCP VERTICAL SOLDER RECEPT		dwg no 51940-474		rev A				
www.fci.com	cat. no. *		Product - Customer Drw			sheet 3 of 4			



Copyright FCI.

PRODUCT NUMBER
51940-474__
NOTE: 3

NOTES:

1. DIMENSIONS AND TOLERANCES ARE IN ACCORDANCE WITH
ASME Y14.5M, 1994 UNLESS OTHERWISE SPECIFIED.

CONNECTOR NOTES:

- 2 HOUSING MATERIAL: UL 94 V-0 GLASS FILLED HIGH-TEMP THERMOPLASTIC
POWER CONTACT MATERIAL: COPPER ALLOY
SIGNAL PIN MATERIAL: COPPER ALLOY
- 3. SEE ITEM 5 & 6 IN PRINT 10064183 FOR PLATING SPEC OF 51940-474 AND 51940-474LF RESPECTIVELY.

- 4 MANUFACTURER'S NAME, DATE CODE AND OPTIONAL P/N TO APPEAR ON
THIS SURFACE. THE MARK CAN BE OMITTED IF THERE IS NOT ENOUGH
SPACE ON THIS SURFACE.
- 5. PRODUCT SPECIFICATION GS-12-149.
APPLICATION SPECIFICATION BUS-20-067.
- 6. PACKAGED IN TRAYS.

PCB NOTES:

- 7. ALL HOLE DIAMETERS ARE FINISHED HOLE SIZE.
- 8 MOUNTING HOLES, WHERE APPLICABLE, ARE UNPLATED.

- 9 $\varnothing 1.151 \pm 0.025$ DRILLED HOLES PLATED WITH
0.008 MIN SnPb OR Sn OVER 0.03
TO 0.08 Cu PLATING TO ACHIEVE
 $\varnothing 1.02 \pm 0.07$ HOLE.

- 10 CONNECTOR KEEP-OUT ZONE.

11. THE VOID CORING IN BETWEEN POWER MODULES, SIGNAL MODULES AND END MODULES ARE
OPTIONAL AND THE SHAPE MAY BE DIFFERENT FOR OPTIMIZE THE MOLDING PROCESS. THE VOID
CORING WILL NOT EFFECT TO PRODUCT FUNCTION.

dr	Luo Weller	2013/01/25	<div>projection</div> <div></div>	<div>MM</div> <div></div>	size	A4	scale	1:1				
eng	Luo Weller	2013/02/24			ecn no			-				
chr	-	-										
appr	Pei-Ming Zheng	2013/02/24	product family		PwrBlade		rel level		Released			
<div></div>	title				12S+3ACP+2DCP+1ACP+2DCP+1ACP+2DCP				dwg no		51940-474	rev
www.fci.com		cat. no.		*	Product - Customer Drw					sheet 4 of 4		