

Signal lamp with integrated LED, 5 mm, protruding round bezel, 28 Volt, bezel yellow, Solder terminal

DISCONTINUED



Description

Signal lamps with integrated LED, mounting hole diameter 5 mm

technical data

> general

Bezel color	yellow	direct links
Property of bezel / mushroom	transparent	
Bezel shape	round	> RAFI eCatalog
illuminated	Yes	
Packaging unit	10 pcs.	
net weight	0.5 g	
Degree of protection, front side, according to DIN EN 60529	IP40	
Minimum order quantity (MOQ)	50 pcs.	
RoHS compliant	Yes	
REACH compliant	Yes	
country of origin	HU	

> mounting diameters

Outside dimension, length	5.9 mm
Outside dimension, width	5.9 mm
Outside dimension, height	21.8 mm
Mounting hole	5 mm
Mounting depth	18 mm
Installation height	3.5 mm
Collar dimension	5.9 mm

> mechanical data

Fixing	Pushing into mounting hole
Solderability	Yes
Terminal on the rear	Solder terminal

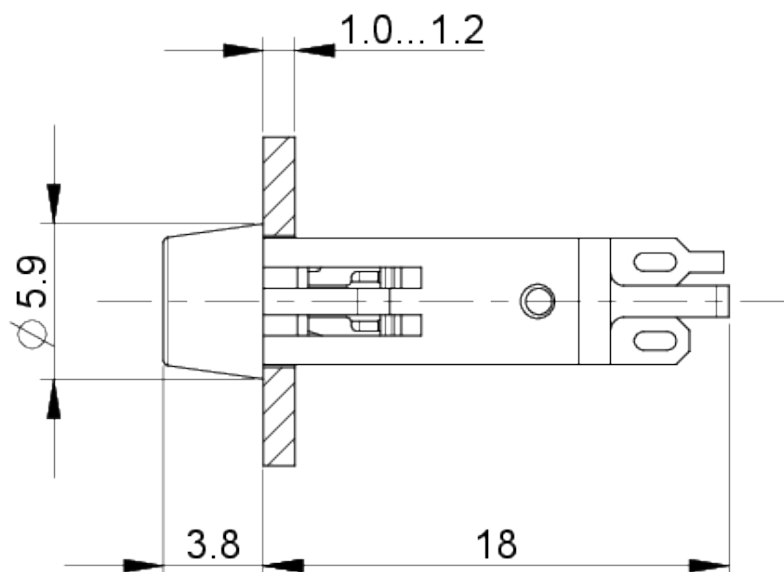
> electrical data

Operating voltage of the luminous element, min.	24 V
---	------

Operating voltage of the luminous element, max.	28 V
Voltage type	DC

## drawings

### Dimensioned drawing



### Mounting hole drawing

