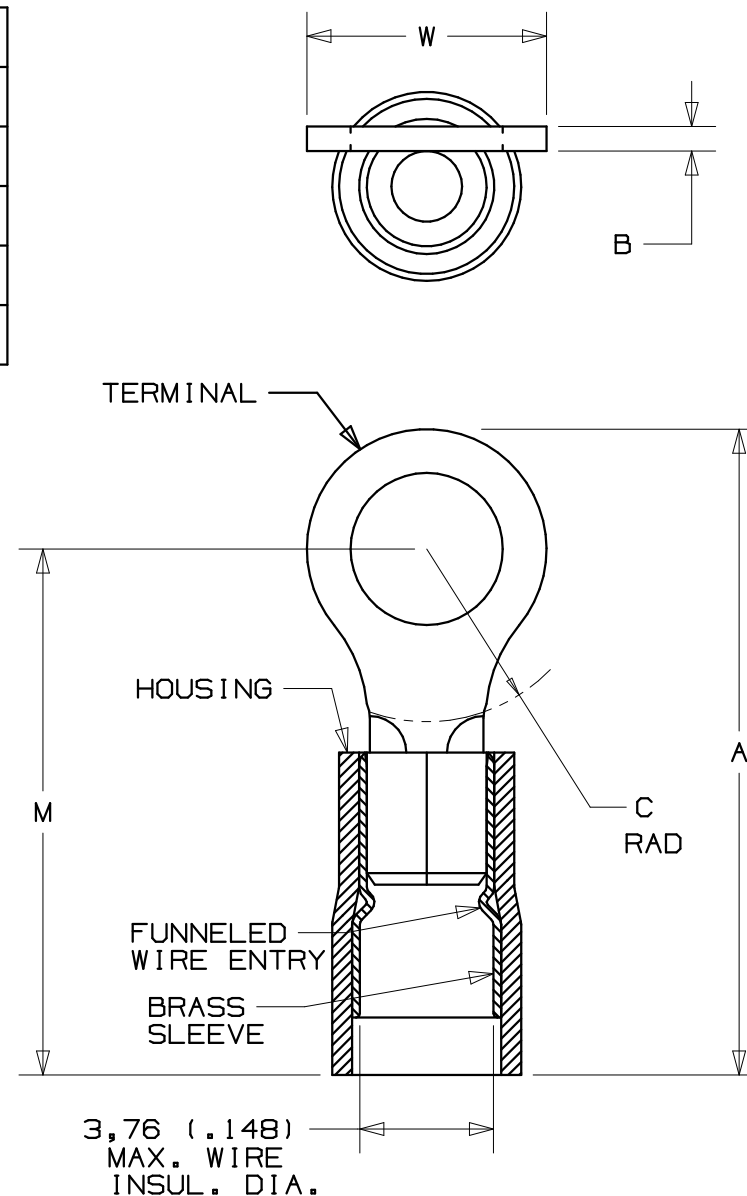


PART NUMBER	STUD SIZE	WIRE RANGE mm <sup>2</sup>	DIMENSIONS mm				
PREFIX			A ±,50	W ±,25	C ±,38	B ±,25	M ±,50
PMNF1-3R	M3	0,5-1,5 (22-18)	19,30 (.76)	5,84 (.23)	5,33 (.21)	,81 (.03)	16,76 (.66)
PMNF1-4R	M4	0,5-1,5 (22-18)	21,59 (.85)	7,87 (.31)	6,35 (.25)	,81 (.03)	17,78 (.70)
PMNF1-5R	M5	0,5-1,5 (22-18)	21,84 (.86)	8,89 (.35)	6,35 (.25)	,81 (.03)	17,53 (.69)
PMNF1-6R	M6	0,5-1,5 (22-18)	26,67 (1.05)	10,92 (.43)	9,65 (.38)	,81 (.03)	21,34 (.84)

## NOTES:

- USED FOR:
  - 600V MAX. VOLTAGE RATING
  - 105°C (221°F) MAX. TEMP. RATING
  - STRANDED COPPER WIRE
- PACKAGE QTY:
  - X =10, -C =100, -M =1000
- MATERIAL:
  - STAMPING: COPPER, TIN PLATED
  - HOUSING: NYLON, RED
- WIRE STRIP LENGTH:  $5,6^{+,8}_{-0}$  ( $7/32^{+1/32}_{-0}$ )
- INSTALLATION TOOLS: REF DWGS.  
A41522, A41523, A41524, A41525
- DIMENSIONS IN BRACKETS ARE IN INCHES OR AWG



A41539\_03

03	10/06	DAW	DAW	ADDED -X PACKAGE QTY.	TR00171	LCA	TRO	<b>PANDUIT</b> TINLEY PARK, ILLINOIS 0,5-1,5 mm <sup>2</sup> METRIC NYLON INSULATED, FUNNELED ENTRY RING TERMINAL
02	10/97	TM	WJB	CHANGED DECIMAL POINTS TO COMMAS	06431	LCA	DH	
01	9/96	JB	RS	UPDATE DIMENSIONS	05056	LA	DH	
00	2/92	DL	SJ	RELEASED	00816	LA	KS	
REV	DATE	BY	CHK	DESCRIPTION	ECN #	CUST	PM	DRAWN BY DRL CHK'D DL SCALE NONE DRAWING NO. A41539