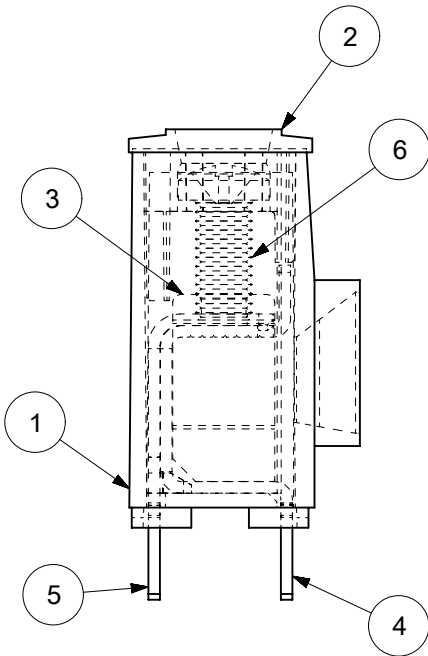


NO. OF CIRCUITS	DIM. "A"		DIM. "B"		ASSEMBLY MATERIAL NO.
	mm	IN	mm	IN	
02	29.2	1.15	15.00	.591	399200802
03	44.2	1.74	30.00	1.181	399200803
04	59.2	2.33	45.00	1.772	399200804
05	74.2	2.92	60.00	2.362	399200805
06	89.2	3.51	75.00	2.953	399200806
07	104.2	4.10	90.00	3.543	399200807
10	149.2	5.87	135.00	5.315	399200810
11	164.2	6.46	150.00	5.906	399200811
12	179.2	7.06	165.00	6.496	399200812

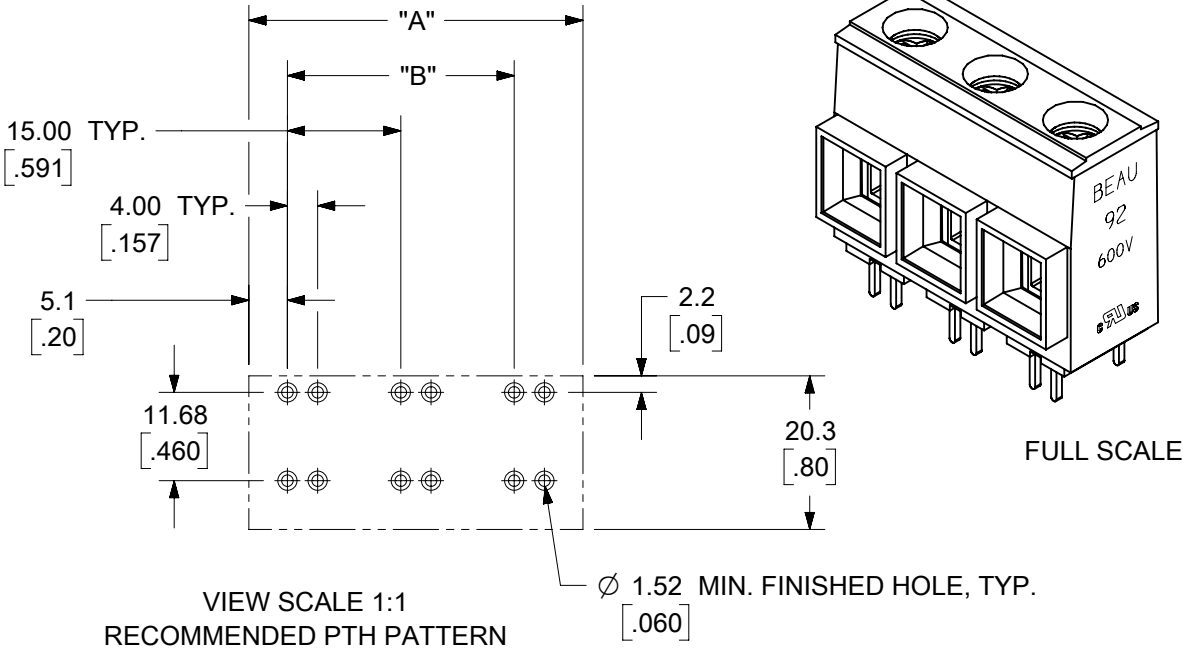
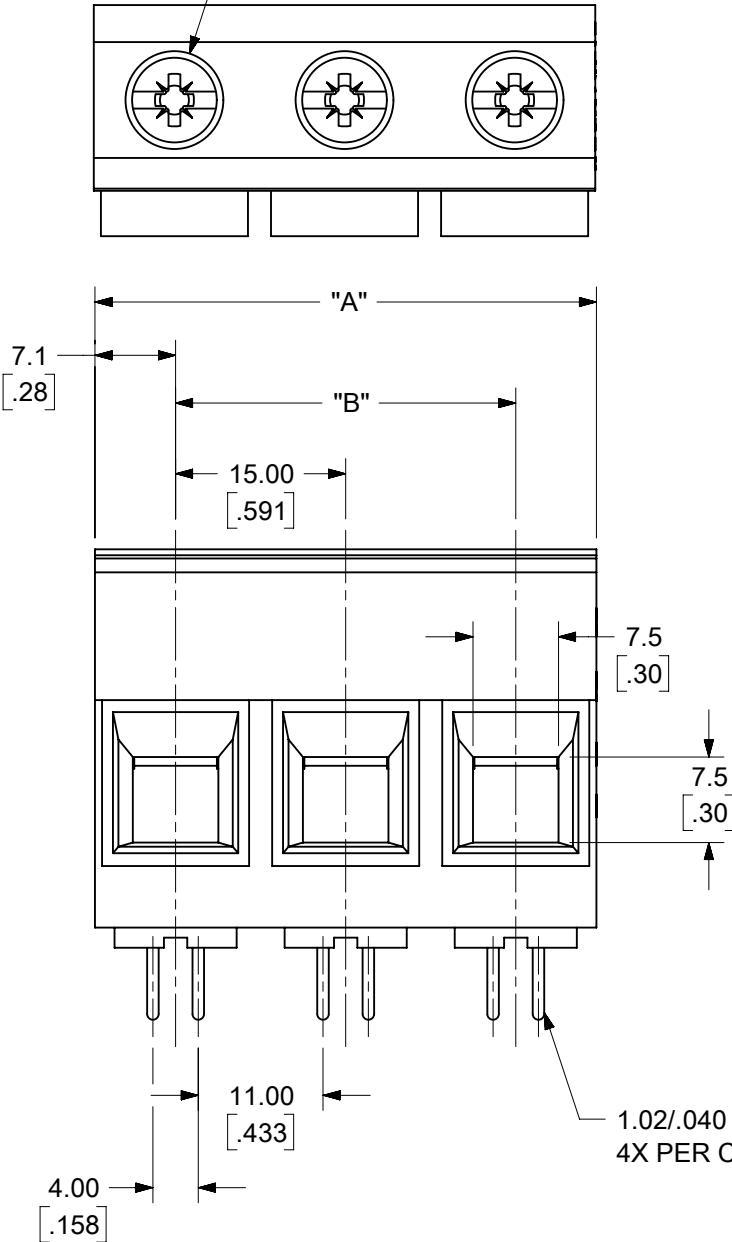


- NOTES:
1. MATERIAL: SEE TABLE
 2. FINISHES: SEE TABLE
 3. DESIGNED TO MEET NEC & UL 1059 CLASS C 600 VOLTS.
 4. "XX" REFERS TO THE QUANTITY OF CIRCUITS.
 5. ASSEMBLY IS ROHS COMPLIANT BY EXEMPTION.
COMPONENTS MARKED WITH AN ASTERISK (*) ARE ROHS COMPLIANT BY EXEMPTION, ALL OTHERS ARE ROHS COMPLIANT.
 6. IT IS ACCEPTABLE TO HAVE GRAPHICS ON BOTH ENDS OF THE TERMINAL BLOCK.

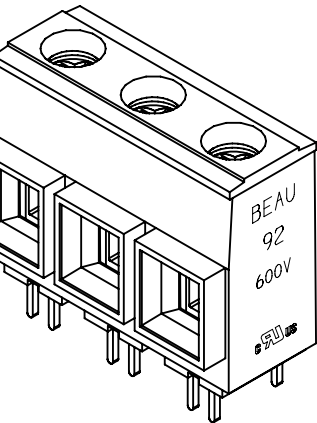
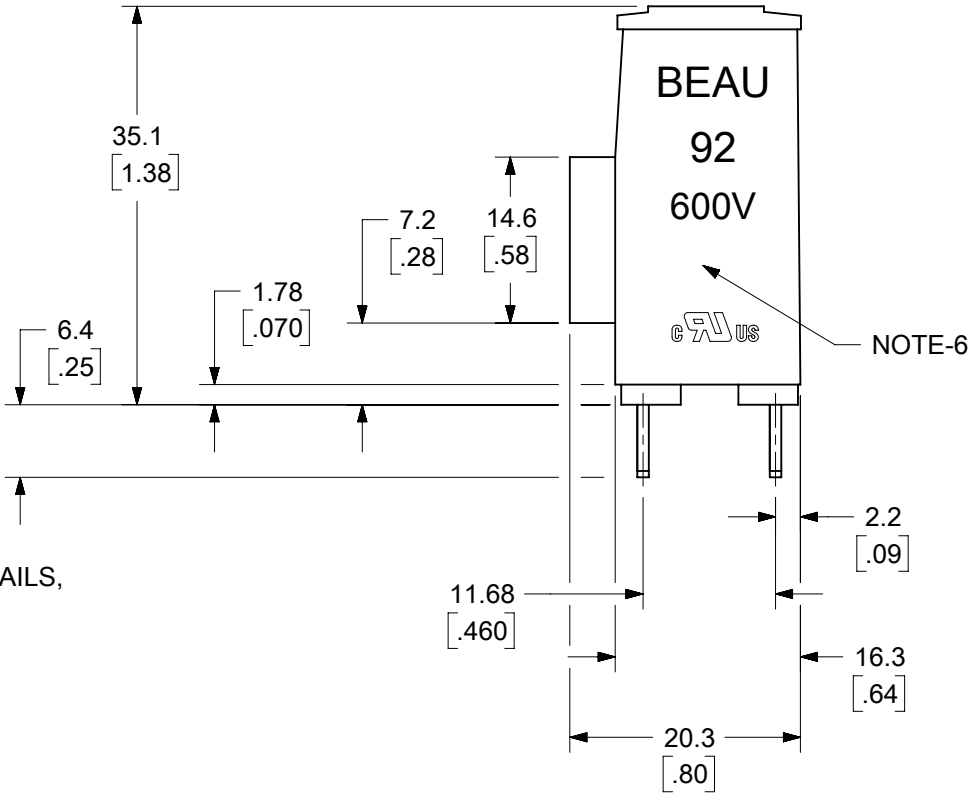
6	XX	SCREW, M5, #2 POZI-SLOT, ST. STEEL	STAINLESS STEEL	TIN PLATED
5	XX	TERMINAL, OUTER	COPPER	TIN PLATED
4	XX	TERMINAL, INNER	COPPER	TIN PLATED
3	XX	CAGE (*)	BRASS	NICKEL PLATED
2	1	COVER	PBT	BLACK
1	1	BODY	PBT	BLACK
ITEM	QTY.	DESCRIPTION	MATERIAL	FINISH

DOCUMENT STATUS	P1	RELEASE DATE	2024/01/29	05:14:16
-----------------	----	--------------	------------	----------

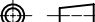
M5 COMBO HEAD SCREW,
6.35/.250" BLADE, #2 POZI



VIEW SCALE 1:1
RECOMMENDED PTH PATTERN



FULL SCALE

THIS DRAWING CONTAINS INFORMATION THAT IS PROPRIETARY TO MOLEX ELECTRONIC TECHNOLOGIES, LLC AND SHOULD NOT BE USED WITHOUT WRITTEN PERMISSION															
DIMENSION UNITS		SCALE		CURRENT REV DESC: REMOVED OBSOLETE PART NUMBERS AS PER PCN#514486.				<div>molex</div>							
mm/INCH		3:2													
GENERAL TOLERANCES (UNLESS SPECIFIED)															
	MM		INCH												
4 PLACES		±		±	EC NO: 774109 DRWN: RAVINR1 2024/01/17 CHK'D: GGA 2024/01/29 APPR: GGA 2024/01/29				15.00/.591 SR BTS, PC, #3 AWG ASST, 600V, 85A, SS SCREW						
3 PLACES		±		±							0.005				
2 PLACES		±	0.13	±							0.01				
1 PLACE		±	0.3	±											
0 PLACES		±		±		INITIAL REVISION: DRWN: CLYORK 2007/09/17 APPR: JMACNEIL 2007/09/18				DOCUMENT NUMBER		DOC TYPE	DOC PART	REVISION	
ANGULAR TOL		±	2.0 °							SD-39920-001		PSD	001	A2	
DRAFT WHERE APPLICABLE MUST REMAIN WITHIN DIMENSIONS				THIRD ANGLE PROJECTION		DRAWING		SERIES		MATERIAL NUMBER		CUSTOMER		SHEET NUMBER	
						B-SIZE		39920		SEE CHART		GENERAL MARKET		1 OF 1	