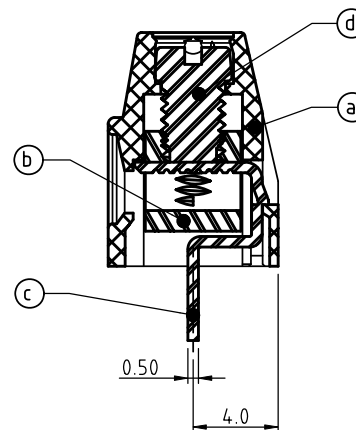
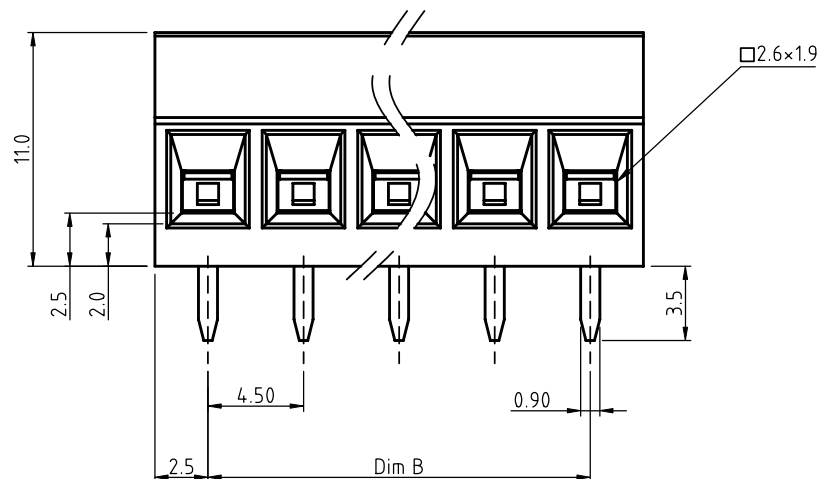
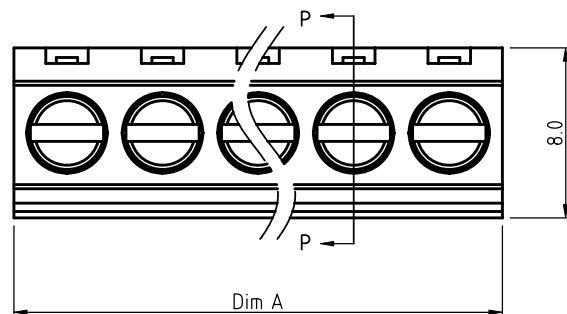
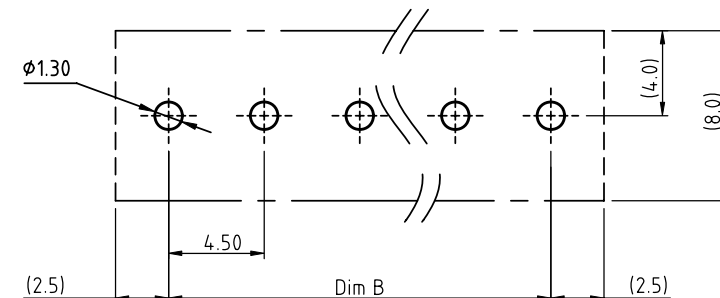


PRODUCT NUMBER	PITCH
K6xx01x000J0G	4.50 mm



SECTION P-P

RECOMMENDED P.C.B LAYOUT
TOP VIEW

Material:

- Item (a) Terminal housing: Thermoplastic (UL 94V-0)
- Item (b) Clamp: Brass, Ni plated
- Item (c) Solder pin: Brass, Tin plated
- Item (d) Terminal screw: Steel Zinc plating"-slot type

Electrical cULus

- Voltage rating: 300VAC
- Current rating: 10A
- Wire range:
 - Solid wire(AWG): 16-24
 - Stranded wire(AWG): 16-24
- Torque: 2.7 Lb-In
- Screw: M3.0
- Wire strip length: 5-6mm
- Withstanding Voltage: 1.6KV
- Operating temperature: -40°C to +115°C
- Soldering temperature: 260°C±5°C/5 Sec
- Safety Approval: cULus

DIMENSION

Dim A	NX4.50±0.50
Dim B	(N-1)X4.50

N=Number of poles

Poles	Tolerance
2p-6p	±0.10
7p-12p	±0.20
13p-18p	±0.30
19p-24p	±0.40

PART NO.: k6 xx 0 1 x 0 0 J0 G

Solid block
No. of poles
02 2 poles
03 3 poles
...
24 24 poles

Color
0 Black (RAL9005)
2 Red (RAL3001/D)
3 Orange(RAL2011/P)
4 Yellow(RAL1018/A)
5 Green(RAL6018/T)
6 Blue (RAL5015/A)
8 Grey(RAL7035/D)
9 White(RAL1102)
C Green(RAL6018/U)

RoHS compliant
(lead<4%)
In copper Alloy

mat'l. code				surface ASME Y14.5	tolerance ASME Y14.5	projection	product family		
ltr	ecn	no	dr	date	tolerances unless otherwise specified	angles	TERMINAL BLOCK		
					X±0.5	MM	title		
					X.X±0.3		TERMINAL BLOCK		
					X*±1"		RISING CLAMP,180D WIRE INLET,SOLID BLOCK		
						scale	dwg no		
					dr EVIN ZHONG 041514	FCI	sheet 1 of 1		size
					enr EVIN ZHONG 041514		K6xx01x000J0G		A4
					chr HANKE FENG 041514		type		CUSTOMER Drawing
					appd SHI JUN 041514				
sheet index	revision sheet	A							