



Color: ■ gray

Electrical data

Ratings per IEC/EN	
Rated current	15 A

Physical data

Width	12 mm / 0.472 inches
Height	3.89 mm / 0.153 inches
Jumper assignment	1-2-3

Material data

Note (material data)	Information on material specifications can be found here
Color	gray
Fire load	0.007 MJ
Weight	1 g

Commercial data

PU (SPU)	200 (25) pcs
Packaging type	Box
Country of origin	DE
GTIN	4044918610445
Customs tariff number	85366990990



Product classification		
UNSPSC		39121421

Environmental Product Compliance	
RoHS Compliance Status	Compliant,No Exemption

Downloads	
Environmental Product Compliance	
Compliance Search	
Environmental Product Compliance 279-483	↓

Documentation				
Additional Information			Bid Text	
Technical Section	pdf	2246.92 KB	279-483	↓
			19.02.2019	xml 2.54 KB
			279-483	↓
			27.04.2017	doc 23.50 KB

CAD/CAE-Data				
CAD data			CAE data	
2D/3D Models 279-483		↓	WSCAD Universe 279-483	↓
			ZUKEN Portal 279-483	↓

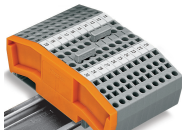
1 Compatible Products	
1.1 Optional Accessories	
1.1.1 Tool	
1.1.1.1 Operating tool	



Item No.: [279-433](#)
Operating tool; made of insulating material; 3-way

Installation Notes

Commoning



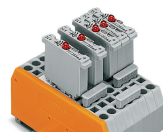
Commoning using comb-style jumper bars.
Push comb-style jumper bars down until fully inserted.

Commoning



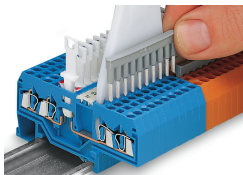
4-conductor through terminal blocks, angled type, formation of groups with 3-way, comb-style jumper bars

Commoning



Carrier terminal blocks with component plugs, alternate comb-style jumper bars, 3-way comb-style jumper bar

Commoning



Commoning front-entry disconnect terminal blocks via comb-style jumper bar using a 10-pole operating tool