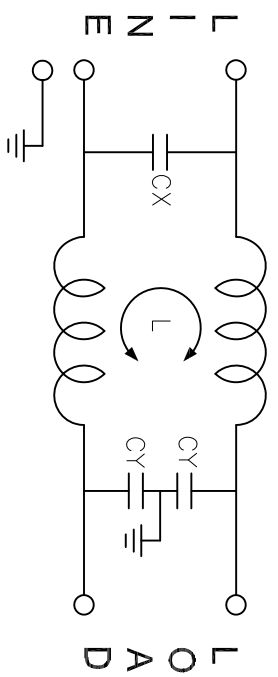
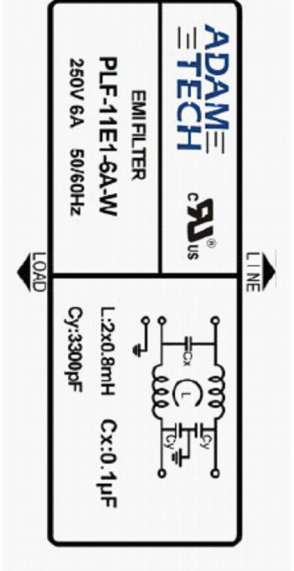
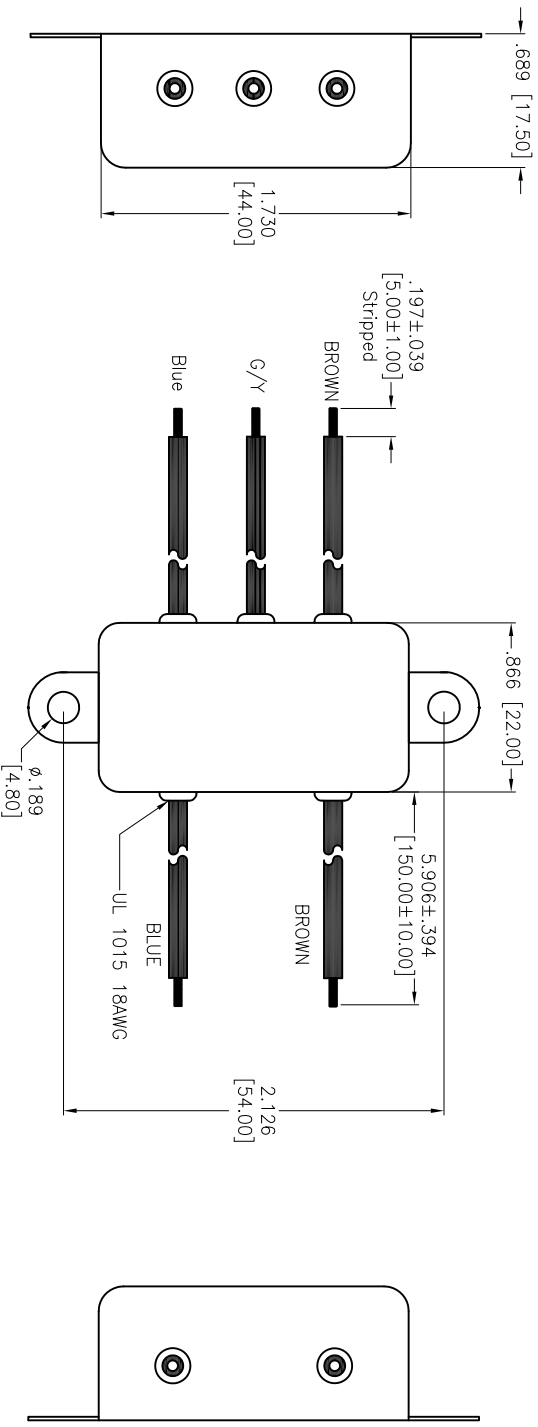


Rev	AWO #	Description	Date	Appr
-		RELEASED	9/22/21	
A		UPDATE DRAWING	4/15/22	WX/RC
B		ADDED DRAWING	5/27/22	WX/RC

APPROVED: _____
 DATE: _____ TITLE: _____



L:2x0.8mH
 Cx:0.1µF(X2)
 Cy:3300pF(Y2)

SPECIFICATIONS:

Electrical:
 Voltage rating: 115/250 VAC
 Current rating: 115/250 VAC: 6 A RMS max
 Leakage Current: Each Line To Ground
 @115VAC/60HZ 0.4mA max
 @250VAC/50HZ 0.8mA max

Hipot Rating(For 1 Minute)

A. Line to Ground: 2,250 VDC
 B. Line to Line: 1450 VDC
 IR: 50 Mohm @500 VDC Any Input or Output to Ground
 Temperature Rating:
 -25°C to +85°C
 Environmental:
 Lead free, RoHS compliant



UNLESS OTHERWISE SPECIFIED ALL DIMENSIONS ARE INCHES [MM]. TOLERANCES: EXCEPT AS NOTED

INCHES	HOLES
X .10	ØX ±.015
XX ±.020	ØXX ±.015
.XXX ±.015	ØXXX ±.015

DRAWN	JJ	9/22/21
CHECKED	RC	9/22/21
APPROVED		

THIS DRAWING CONTAINS INFORMATION THAT IS PROPRIETARY AND SHOULD NOT BE USED WITHOUT PRIOR WRITTEN PERMISSION FROM ADAM TECH

ADAM TECH
 909 Rahway Avenue,
 Union, NJ 07083
 Phone: 908-687-5000
 Fax: 908-687-5710

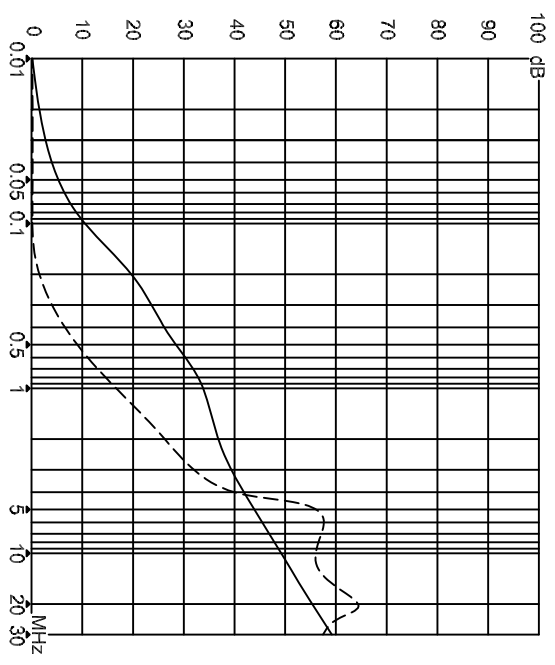
TITLE	EMIR/PE POWER FILTER, WIRE LEADS, 6 AMP, CHASSIS MOUNT		
SIZE	PART NO.	SCALE:	REV.
X	PLF-11E1-6A-W	NIS	B
REF:	S00206C	SHEET	1 OF 2

Rev	AWO #	Description	Date	Appr
		SEE SHT 1 OF 2 FOR REVISION		

APPROVED: _____
 DATE: _____ TITLE: _____

INSERTION LOSS(IN 50 ohm system according IEC/CISPR

共模(common mode)
 差模(differential mode)



UNLESS OTHERWISE SPECIFIED ALL DIMENSIONS ARE INCHES [MM]. TOLERANCES: EXCEPT AS NOTED

INCHES	±.10	Holes	±.015
X	±.020	ØXX	±.015
.XX	±.015	ØXXX	±.010
.XXX	±.015		

DRAWN	JJ	9/22/21
CHECKED	RC	9/22/21
APPROVED		

THIS DRAWING CONTAINS INFORMATION THAT IS PROPRIETARY AND SHOULD NOT BE USED WITHOUT PRIOR WRITTEN PERMISSION FROM ADAM TECH

ADAM TECH

909 Rahway Avenue,
 Union, NJ 07083
 Phone: 908-687-5000
 Fax: 908-687-5710

TITLE	EM/RF POWER FILTER, WIRE LEADS, 6 AMP, CHASSIS MOUNT		
SIZE	PART NO.	REV.	
X	PLF-11E1-6A-W	B	
REF:	S00206C	SCALE:	NTS
		SHEET	2 OF 2

