



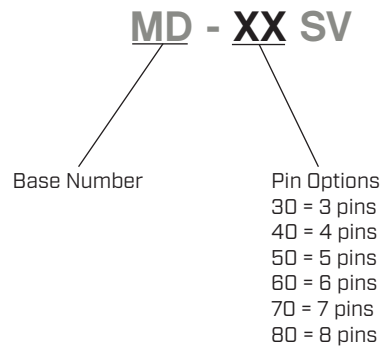
SERIES: MD-SV | DESCRIPTION: MINI DIN CONNECTOR

FEATURES

- PCB mount
- vertical mount
- 3-8 pins



PART NUMBER KEY



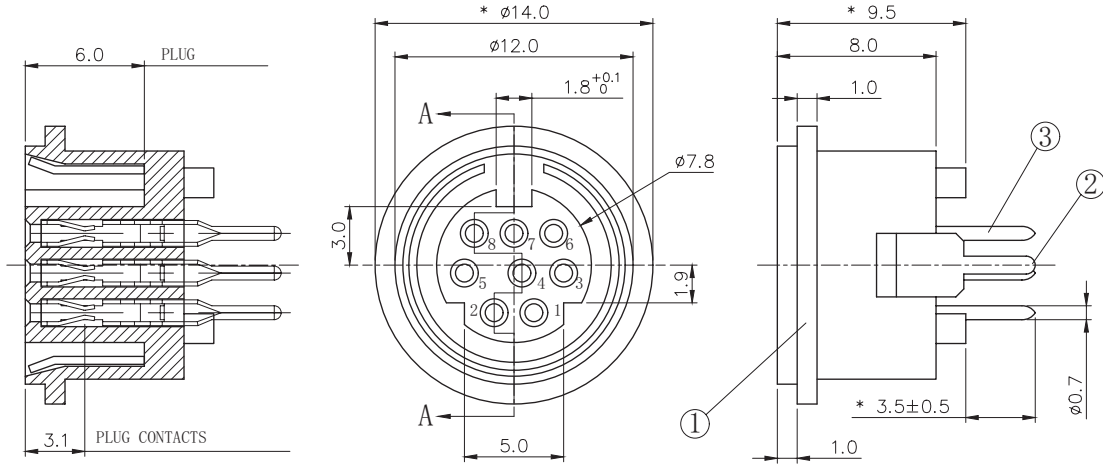
SPECIFICATIONS

| parameter | conditions/description | min | typ | max | units |
|-----------------------|-------------------------|-----|-----------|--------|------------|
| rated input voltage | | | 100 12 | | Vac Vdc |
| rated input current | at 100 Vac at 12 Vdc | | | 1 2 | A A |
| contact resistance | | | | 30 | mΩ |
| insulation resistance | at 250 Vdc | 50 | | | MΩ |
| voltage withstand | for 1 minute | | | 250 | Vac |
| insertion force | | 0.8 | | 6.0 | kg |
| withdrawal force | | 0.8 | | 4.5 | kg |
| operating temperature | | -20 | | 85 | °C |
| life | | | 1,000 | | cycles |
| flammability rating | UL94V-0 | | | | |
| RoHS | yes | | | | |

MECHANICAL DRAWINGS (MD-30SV, MD-40SV, MD-50SV)

units: mm
 tolerance: ±0.3 mm
 PCB: ±0.1 mm
 unless otherwise noted

| ITEM | DESCRIPTION | MATERIAL | PLATING/COLOR |
|------|----------------|-----------------|---------------|
| 1 | body | PBT (UL94V-0) | black |
| 2 | earth terminal | brass | tin |
| 3 | terminals | phosphor bronze | silver |

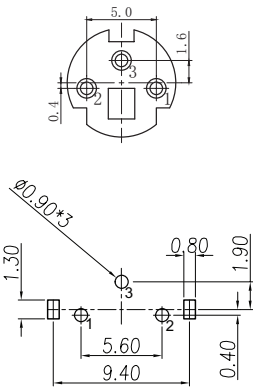


A-A

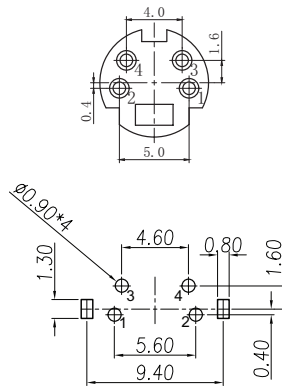
MD-30SV

MD-40SV

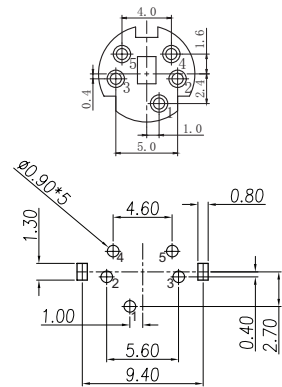
MD-50SV



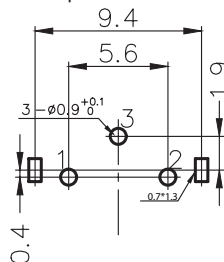
Recommended PCB Layout
 Bottom View
 [Date Codes prior to 03/03/2022]



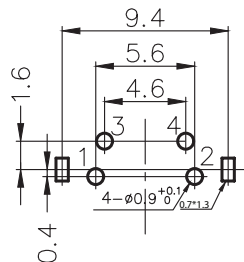
Recommended PCB Layout
 Bottom View
 [Date Codes prior to 03/03/2022]



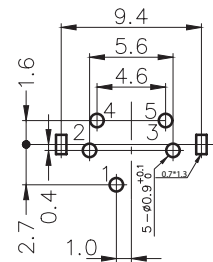
Recommended PCB Layout
 Bottom View
 [Date Codes prior to 03/03/2022]



Recommended PCB Layout
 Bottom View
 [Date Codes after 03/03/2022]



Recommended PCB Layout
 Bottom View
 [Date Codes after 03/03/2022]

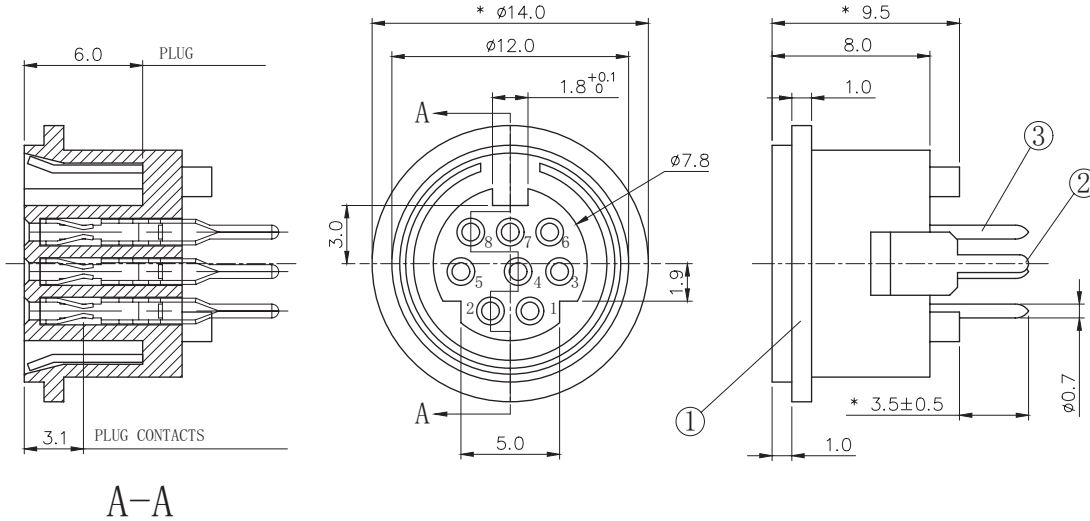


Recommended PCB Layout
 Bottom View
 [Date Codes after 03/03/2022]

MECHANICAL DRAWINGS (MD-60SV, MD-70SV, MD-80SV)

units: mm
 tolerance: ±0.3 mm
 PCB: ±0.1 mm
 unless otherwise noted

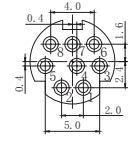
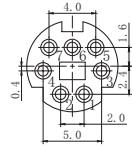
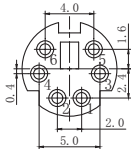
| ITEM | DESCRIPTION | MATERIAL | PLATING/COLOR |
|------|----------------|-----------------|---------------|
| 1 | body | PBT (UL94V-0) | black |
| 2 | earth terminal | brass | tin |
| 3 | terminals | phosphor bronze | silver |



MD-60SV

MD-70SV

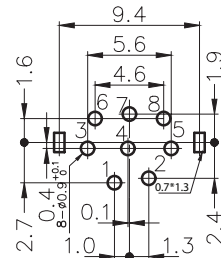
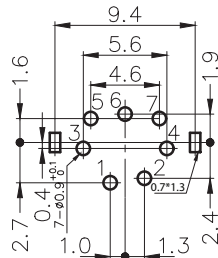
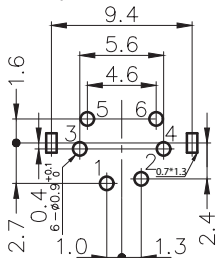
MD-80SV



Recommended PCB Layout
 Bottom View
 (Date Codes prior to 03/03/2022)

Recommended PCB Layout
 Bottom View
 (Date Codes prior to 03/03/2022)

Recommended PCB Layout
 Bottom View
 (Date Codes prior to 03/03/2022)



Recommended PCB Layout
 Bottom View
 (Date Codes after 03/03/2022)

Recommended PCB Layout
 Bottom View
 (Date Codes after 03/03/2022)

Recommended PCB Layout
 Bottom View
 (Date Codes after 03/03/2022)

REVISION HISTORY

| rev. | description | date |
|------|--|------------|
| 1.0 | initial release | 02/23/2006 |
| 1.01 | new template applied | 03/07/2012 |
| 1.02 | updated datasheet | 08/25/2017 |
| 1.03 | updated housing, added 7 pin version, brand update | 10/08/2019 |
| 1.04 | modified design, changed factory | 02/18/2022 |
| 1.05 | logo, datasheet style update | 08/05/2022 |
| 1.06 | CUI Devices rebranded to Same Sky | 09/12/2024 |

The revision history provided is for informational purposes only and is believed to be accurate.



Same Sky offers a one (1) year limited warranty. Complete warranty information is listed on our website.

Same Sky reserves the right to make changes to the product at any time without notice. Information provided by Same Sky is believed to be accurate and reliable. However, no responsibility is assumed by Same Sky for its use, nor for any infringements of patents or other rights of third parties which may result from its use.

Same Sky products are not authorized or warranted for use as critical components in equipment that requires an extremely high level of reliability. A critical component is any component of a life support device or system whose failure to perform can be reasonably expected to cause the failure of the life support device or system, or to affect its safety or effectiveness.

[sameskydevices.com](https://www.sameskydevices.com)