

# Data Sheet

LL01CR-BZT80140L83-Mx



► LED Solution Provider



CXA15xx



Similar Products(Brightness Uniformity, Assymetry, Elevation needed)

## ■ Features & Typical Applications

- High efficiency
- Optimized Uniformity
- Roadway Lighting
- Lens with Holder

## ■ Table of Contents

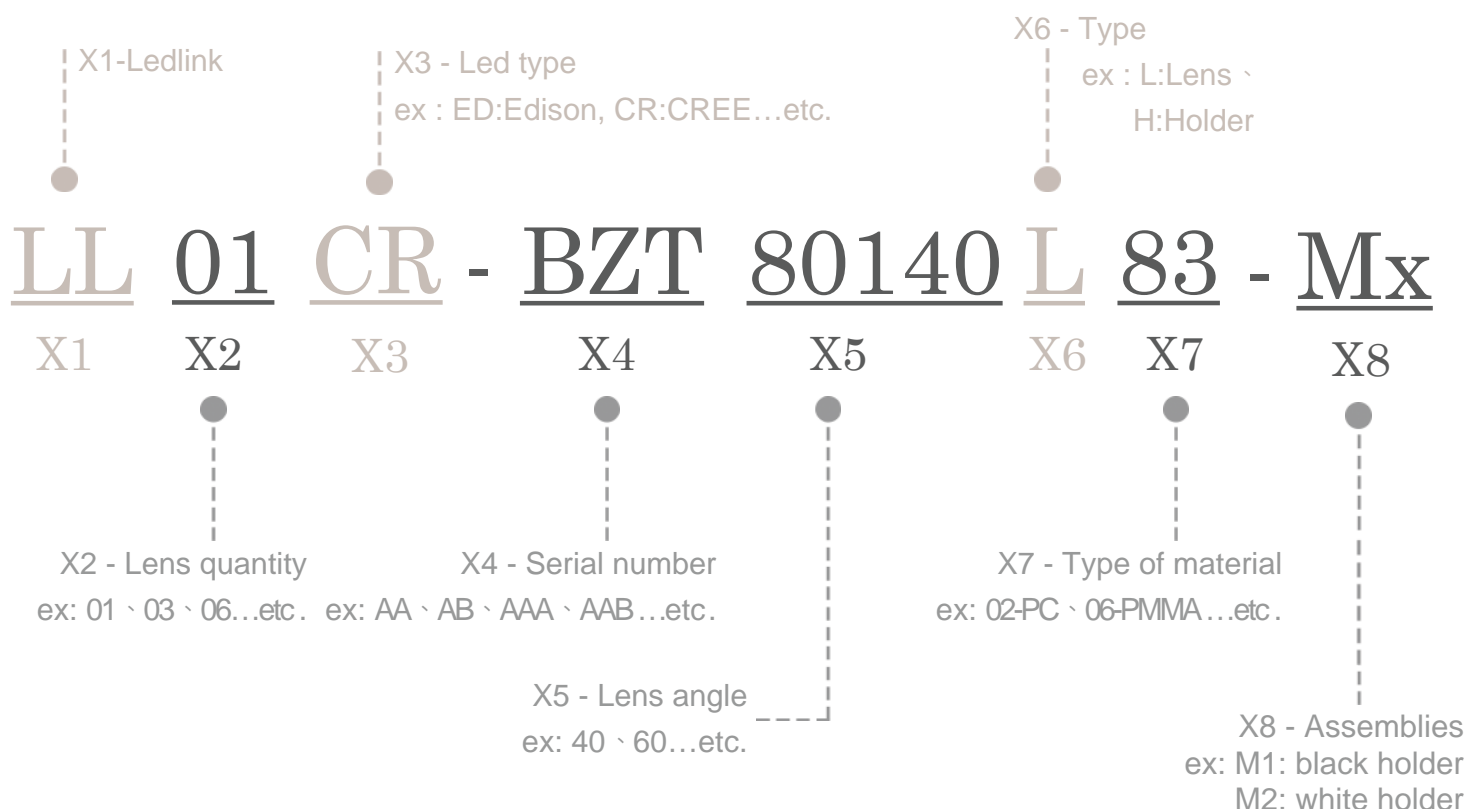
General Information & Product Nomenclature.....	P.2
Optical Specifications .....	P.3
Mechanical Specifications .....	P.4
Package Specifications .....	P.5

# LL01CR-BZT80140L83-Mx

## General Information

- Lens Material : Silicone MS1002
- Holder Material : (Black)PBT-G15V0/(White)PBT4815
- Operating Temperature range -40°C~+200°C(upper limit +220°C).
- Storage Temperature range -40°C~+200°C(upper limit +220°C).
  - \* Average transmittance in visible spectrum 400nm~700nm>90%.
- Usage and Maintenance:
  1. If necessary, clean lenses with mild soap, water and soft cloth.
  2. Never use any commercial cleaning solvents on lenses, like alcohol.
  3. Please handle or install lenses with wearing gloves, skin oils may damage lens or its optical characteristic.

## Product Nomenclature



# LL01CR-BZT80140L83-Mx Optical Specifications

**CREE**   
LED Solution Provider

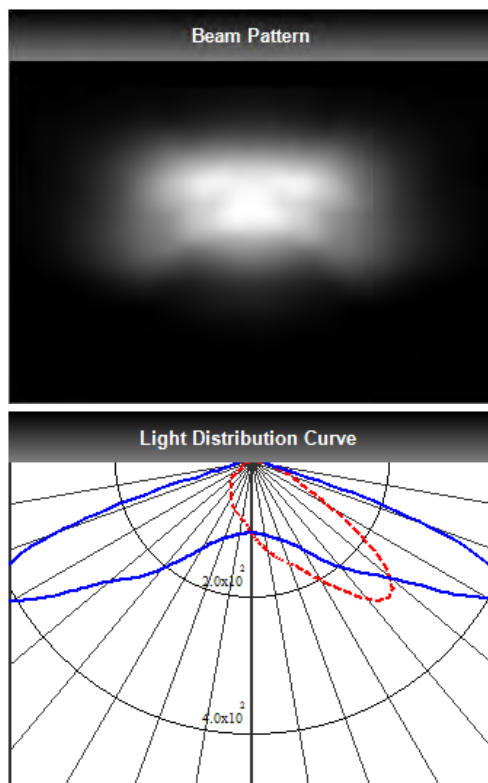


**CXA15xx**

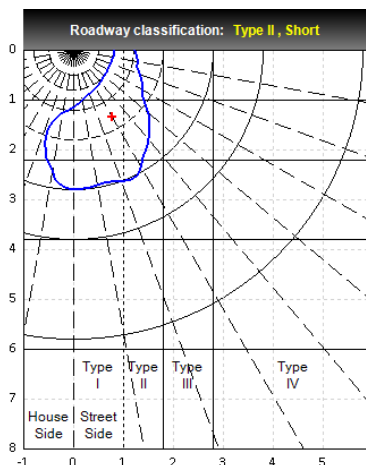
Note: (1) All the results of analysis are based on 15 degrees of elevation.  
(2) Tolerance:  $\pm 10\%$ .  
(3) Led Luminous Flux(lm): 815( $\pm 5\%$ ).

IES File: [Download](#)

@elevation 15°



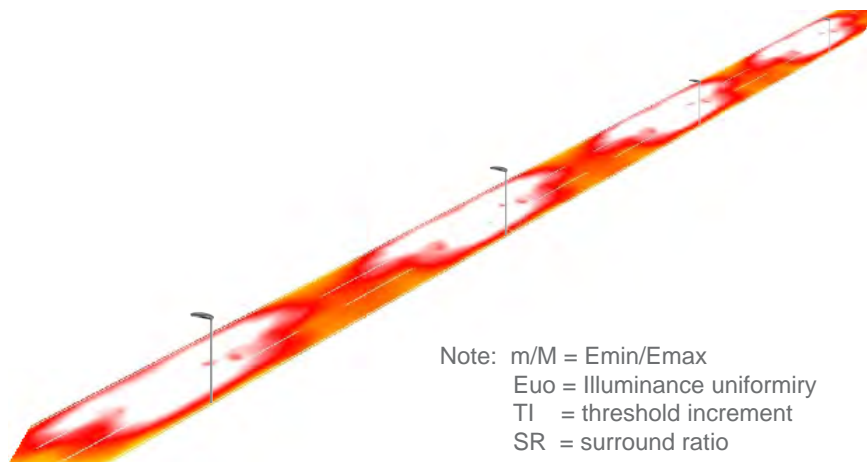
---C0:0-180 —C1:90-270



Elevation	Roadway Classification
0°	Type I, Short
5°	Type II, Short
10°	Type II, Short
15°	Type II, Short
20°	Type III, Short

## DIALux Simulation Result

Analyzed file: [Download](#)



Note:  $m/M = E_{min}/E_{max}$   
 $E_{uo}$  = Illuminance uniformity  
 TI = threshold increment  
 SR = surround ratio

### Recommend configuration condition

Height	=	10m
Distance	=	35m
Roadwidth	=	10.5m
Elevation	=	15degree
Overhang	=	1m

### Result

m/M	=	0.7
$E_{uo}$	=	0.8
TI	=	13%
SR	=	0.6

\*The results would be similar if the configuration conditions are equally magnified or minified.

\*This testing result is obtained through testing the popular rank LED samples which provided by the original manufacturer. Hence, the testing results would be varied as the users choose same LED model but different rank.

\*The analyzed file require DIALux v4.12 and above to open.

# LL01CR-BZT80140L83-Mx

## Mechanical Specification

### 1. Fixing method

☐ Glue

☒ Screw

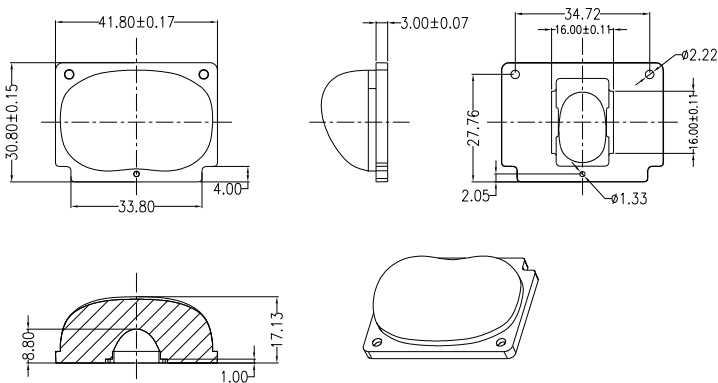
☐ Tape

☐ Fixing-ring

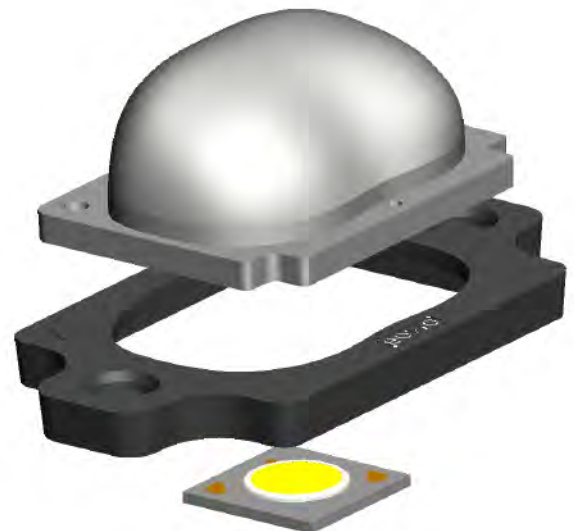
☒ Frame

Note: (1) All dimensions are in mm.  
(2) All measurements are  $\pm 0.15$  mm unless otherwise indicated.

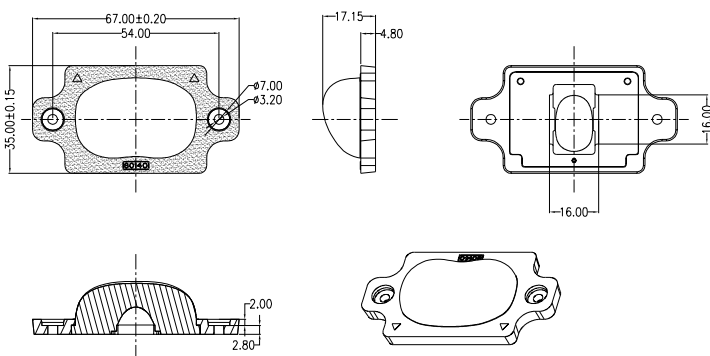
### 2. Lens dimension



### 3. Lens + Holder + Leds assembly instruction



### 4. Assembly dimension



### 5. View assembly lens with LED:



Holder part number : LL01CRTP80140Hx