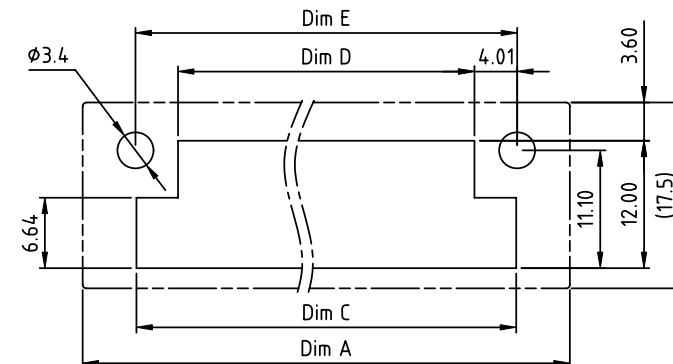
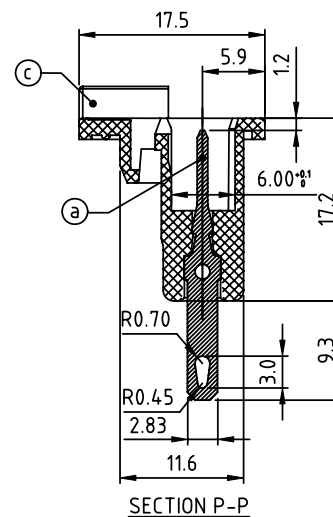
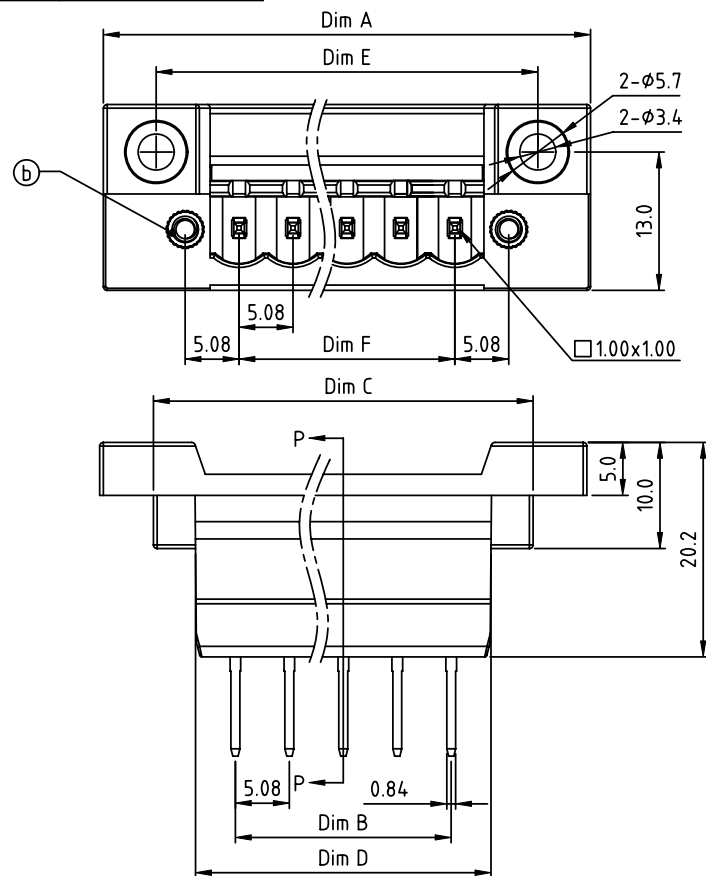


PRODUCT NUMBER

PITCH

VZxx50x000J0G

5.08 mm

RECOMMENDED P.C.B CUTOUT
TOP VIEW

Material:

- Item① Solder Pin: Brass with Tin plated.
- Item② Flange nut: brass M2.5
- Item③ Terminal (housing): Thermoplastic(UL94 V-0)

Electrical cULus

- Voltage rating: 300VAC
- Current rating: 12A
- Withstanding Voltage: 1.6kv
- Operating temperature: -40°C to +115°C
- Soldering temperature: 260°C±5°C/5 Sec
- Safety Approval: cULus

DIMENSION

Dim A	N×5.08+20.5
Dim B	(N-1)×5.08
Dim C	N×5.08+10.3
Dim D	N×5.08+2.5
Dim E	N×5.08+10.52
Dim F	(N-1)×5.08

N=Number of poles

Poles	Tolerance
2-5P	±0.15
6-10P	±0.20
11-15P	±0.30
16-24P	±0.40

PART NO.: VZ xx 50 x 0 00J0 G

Solid block	No. of poles	Color	RoHS compliant (lead<4%) In copper Alloy
0	2	Black (RAL9005)	
1	2	Red (RAL3001/D)	
2	2	Orange(RAL2011/P)	
3	3	Yellow(RAL1018/A)	
4	3	Green(RAL6018/T)	
5	3	Blue (RAL5015/A)	
6	3	Grey(RAL7035/D)	
7	3	White(RAL1102)	
8	3	Green(RAL6018/U)	

mat'l. code				surface	tolerance	projection	product family	
ltr	ecn	no	dr	date	ASME Y14.5 ✓	ASME Y14.5	TERMINAL BLOCK	
					tolerances unless otherwise specified		title	
					angles	X.±0.5	TERMINAL BLOCK	
					angles	X.X±0.3	PLUGGABLE SOCKET, FEED-THROUGH HEADER	
					X*±1°	X.XX±0.1	scale	
					dr	EVIN ZHONG 050714	dwg no	
					enr	EVIN ZHONG 050714	sheet 1 of 1	
					chr	HANKE FENG 050714	size	
					appd	SHI JUN 050714	A4	
					sheet index	revision	type	
					sheet	1	CUSTOMER Drawing	