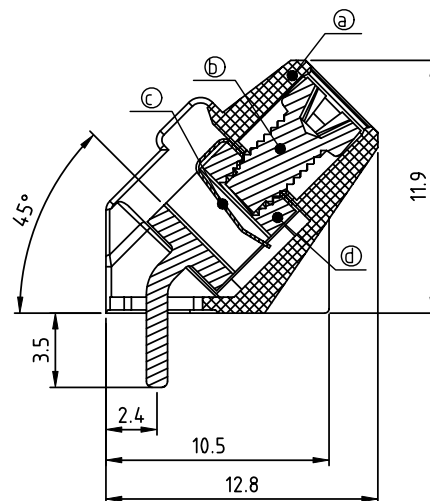
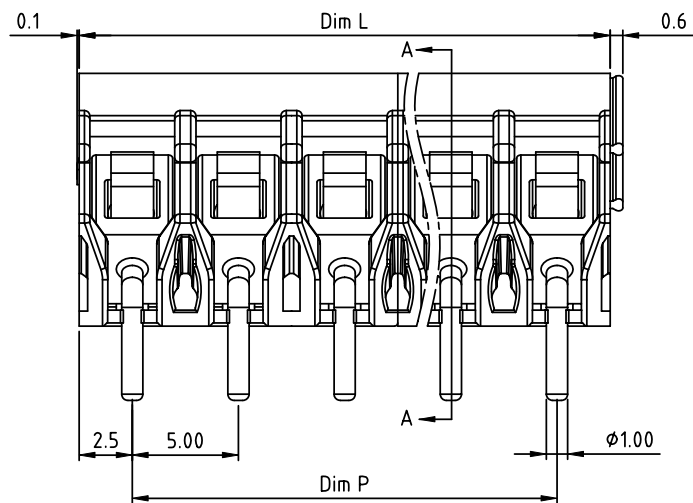
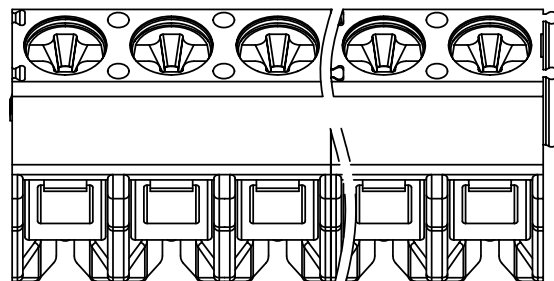


PRODUCT NUMBER	PITCH
KZxx70x000J0G	5.00 mm



SECTION A-A

N = Number of poles
 Dim L = N x 5.0
 Dim P = (N-1) x 5.0

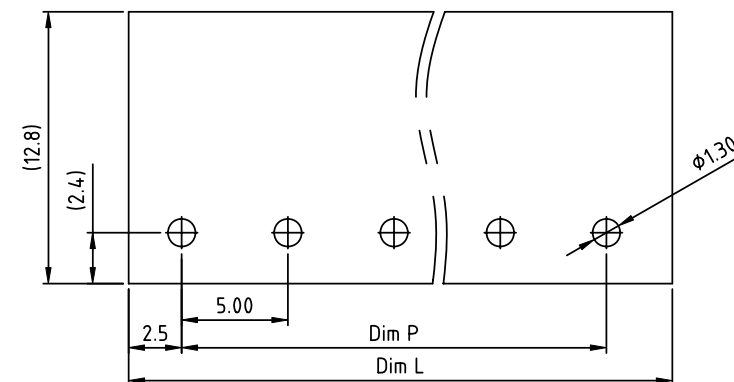
Dim. Poles	Dim L	Dim P
2-6p	±0.15	±0.15
7-12p	±0.25	±0.25
13-18p	±0.35	±0.35
19-24p	±0.40	±0.40

PART NO.: KZ xx 7 0 x 0 00J0 G

End stackable
 No. of poles
 02 2 poles
 03 3 poles
 ...
 24 24 poles

Body Color
 0 Black (RAL9005)
 2 Red (RAL3001/D)
 3 Orange (RAL2011/P)
 4 Yellow (RAL1018/A)
 5 Green (RAL6018/T)
 6 Blue (RAL5015/A)
 8 Grey (RAL7035/D)
 9 White (RAL1102)
 C Green (RAL6018/U)

RoHS compliant
 (lead < 4%)
 In copper Alloy




RECOMMENDED P.C.B LAYOUT
TOP VIEW

Materials

Item @ Terminal housing: PA66 (UL94V-0)
 Item ⑤ Terminal screw: Steel Zinc plating "+/-" slot type
 Item ③ Wire guard: Stainless steel
 Item ④ Terminal body: Brass (CuZn), Tin Plated

Electrical cULus

- Voltage rating: 300VAC
- Current rating: 15A
- Wire range:
- Solid wire (AWG): 12-26
- Stranded wire (AWG): 12-26
- Torque (Lb-In): 2.4
- Screw: M2.6
- Wire strip length: 5-6mm
- Withstanding Voltage: 1.6KV
- Operating temperature: -40°C to +115°C
- Soldering temperature: 260°C ± 5°C / 5 Sec
- Safety Approval: CULUS

mat'l. code				surface ASME Y14.5		tolerance ASME Y14.5		projection		product family																																																																																																																																																																																																																																																																																																																																																																																																																																																																																																																																																																																																																																																																																																																																																																																																																																																																																																																																																																																																																																																																																																																																																																																																																																																																																																																																									
ltr				ecn		no		dr		date		tolerances unless otherwise specified										TERMINAL BLOCK																																																																																																																																																																																																																																																																																																																																																																																																																																																																																																																																																																																																																																																																																																																																																																																																																																																																																																																																																																																																																																																																																																																																																																																																																																																																																																																													
												angles		X.±0.5				MM		title		TERMINAL BLOCK																																																																																																																																																																																																																																																																																																																																																																																																																																																																																																																																																																																																																																																																																																																																																																																																																																																																																																																																																																																																																																																																																																																																																																																																																																																																																																																													
												X'±1"		X.X±0.3						WIRE PROTECTOR,SQUARE HOLE,4SD WIRE INLET																																																																																																																																																																																																																																																																																																																																																																																																																																																																																																																																																																																																																																																																																																																																																																																																																																																																																																																																																																																																																																																																																																																																																																																																																																																																																																																															
												X.XX±0.1				scale				dwg no		sheet 1 of 1																																																																																																																																																																																																																																																																																																																																																																																																																																																																																																																																																																																																																																																																																																																																																																																																																																																																																																																																																																																																																																																																																																																																																																																																																																																																																																																													
												dr		EVIN ZHONG		040314						size																																																																																																																																																																																																																																																																																																																																																																																																																																																																																																																																																																																																																																																																																																																																																																																																																																																																																																																																																																																																																																																																																																																																																																																																																																																																																																																													
												engr		EVIN ZHONG		040314						KZxx70x000J0G																																																																																																																																																																																																																																																																																																																																																																																																																																																																																																																																																																																																																																																																																																																																																																																																																																																																																																																																																																																																																																																																																																																																																																																																																																																																																																																													
												chr		HANKE FENG		040314						A4																																																																																																																																																																																																																																																																																																																																																																																																																																																																																																																																																																																																																																																																																																																																																																																																																																																																																																																																																																																																																																																																																																																																																																																																																																																																																																																													
												appd		SHI JUN		040314																																																																																																																																																																																																																																																																																																																																																																																																																																																																																																																																																																																																																																																																																																																																																																																																																																																																																																																																																																																																																																																																																																																																																																																																																																																																																																																																			
sheet index		revision		A		sheet		1																																																																																																																																																																																																																																																																																																																																																																																																																																																																																																																																																																																																																																																																																																																																																																																																																																																																																																																																																																																																																																																																																																																																																																																																																																																																																																																																										</	