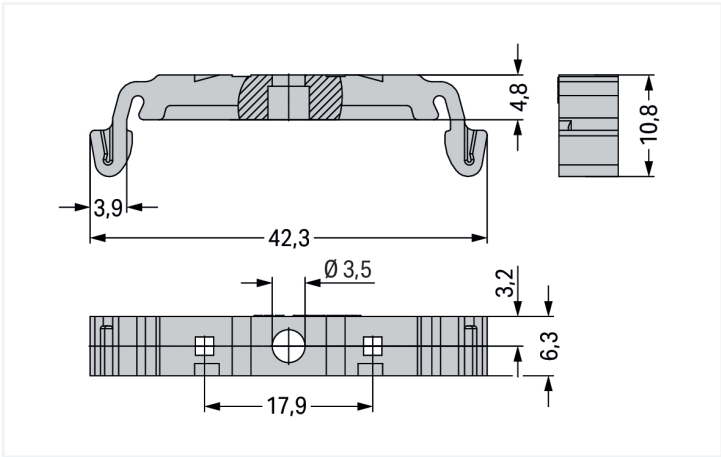




Color: ■ gray



Dimensions in mm

Technical data

Mounting type	DIN-35 rail
---------------	-------------

Mechanical data

Suitable	for male headers with snap-in mounting feet (2091 and 2092 Series)
----------	--------------------------------------------------------------------

Material data

Color	gray
Material group	I
Insulation material (main housing)	Polyamide (PA66)
Flammability class per UL94	V0
Fire load	0.036 MJ
Weight	1.2 g



Commercial data	
Product Group	2 (Terminal Block Accessories)
PU (SPU)	500 (25) pcs
Packaging type	Box
Country of origin	CH
GTIN	4050821279730
Customs tariff number	39269097900

Product classification	
UNSPSC	39121702
eCl@ss 10.0	27-14-11-92
eCl@ss 9.0	27-14-11-92
ETIM 9.0	EC002848
ETIM 8.0	EC002848
ECCN	NO US CLASSIFICATION

Environmental Product Compliance	
RoHS Compliance Status	Compliant,No Exemption

Downloads

Environmental Product Compliance

Compliance Search

Environmental Product Compliance 209-189

↓

Documentation

Additional Information

Technical Section

03.04.2019

pdf

2027.26 KB

↓

CAD/CAE-Data

CAD data

2D/3D Models 209-189

↓

CAE data

ZUKEN Portal 209-189

↓