



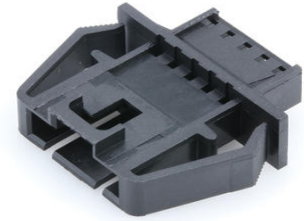
Part Number : [701070039](#)

Product Description : SL Wire-to-Wire Panel Mount Crimp Housing, Single Row, Version B, with Mounting Ears, 5 Circuits, Black

Series Number : 70107

Status : Active

Product Category : Connector Housings



Documents and Resources

Drawings

[701070039 sd.pdf](#)

[PK-70107-100-001.pdf](#)

3D Models and Design Files

[STEP AP242](#)

[SOLIDWORKS](#)


[Creo](#)

Specifications

[PS-70400-001.pdf](#)

Product Environment Compliance

Compliance

GADSL/IMDS	Not Relevant
China RoHS	 per SJ/T 11365-2006
EU ELV	Not Relevant
Low-Halogen Status	Not Low-Halogen per IEC 61249-2-21
REACH SVHC	Not Contained per D(2025)7771-DC (04 Feb 2026)
EU RoHS	Compliant per EU 2015/863

Compliance Statements

- EU RoHS

- REACH SVHC
- Low-Halogen

Industry Documents

- IPC 1752A Class C
- IPC 1752A Class D
- Molex Product Compliance Declaration
- IEC-62474
- chemSHERPA (xml)

Substances of Interest

- PFAS

EU RoHS Certificate of Compliance

Additional Product Compliance Information

Part Details

General

Status	Active
Category	Connector Housings
Series	70107
Description	SL Wire-to-Wire Panel Mount Crimp Housing, Single Row, Version B, with Mounting Ears, 5 Circuits, Black
Application	Signal, Wire-to-Wire
Comments	Version B with Mounting Ears
Product Name	SL
UPC	800753560864

Agency

CSA	LR19980
UL	E29179

Physical

Circuits (maximum)	5
Color - Resin	Black
Flammability	94V-0
Gender	Plug
Glow-Wire Capable	No

Lock to Mating Part	No
Material - Resin	Polyester
Net Weight	1.439/g
Number of Rows	1
Packaging Type	Bag
Panel Mount	Yes
Pitch - Mating Interface	2.54mm
Polarized to Mating Part	Yes
Stackable	No
Temperature Range - Operating	-40° to +105°C

Solder Process Data

Lead-Free Process Capability	N/A
------------------------------	-----

Mates With / Use With

Mates with Part(s)

Description	Part Number
SL Single Row Crimp Housings and CPA Retainers	<u>70066</u>
SL Single Row Female Insulation Displacement Connector Assemblies	<u>70400</u>
SL Single Row Female Receptacles	<u>70430</u>

Use with Part(s)

Description	Part Number
SL Male Terminals	<u>70021</u>

This document was generated on Apr 13, 2026