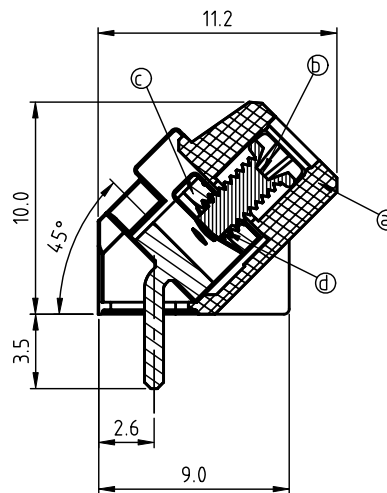
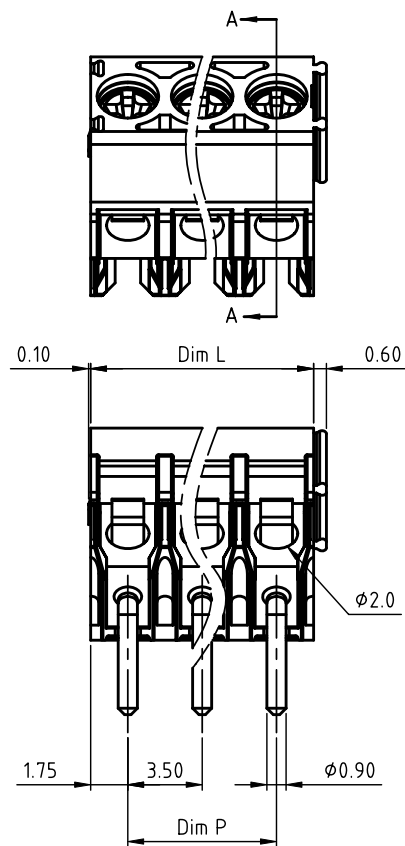
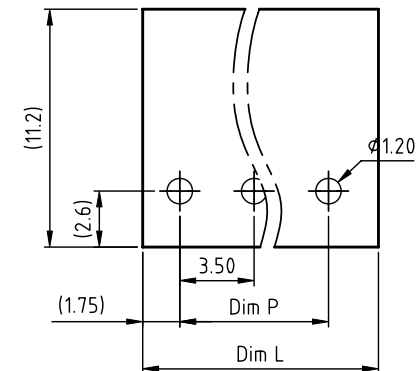


| PRODUCT NUMBER | PITCH   |
|----------------|---------|
| KZxx10x100J0G  | 3.50 mm |



SECTION A-A

RECOMMENDED P.C.B LAYOUT  
TOP VIEW

## Materials

- ItemⒶ Terminal housing : Thermoplastic (UL94V-0)  
 ItemⒷ Terminal screw: Steel Zinc plating "+/-" slot type  
 ItemⒸ Wire guard : Stainless steel  
 ItemⒹ Terminal body: Brass(CuZn) ,Tin Plated

## Electrical cULus

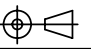

- Voltage rating: 300VAC
- Current rating: 15A
- Wire range:
- Solid wire(AWG): 12-26
- Stranded wire(AWG): 12-26
- Torque(Lb-In): 3.5
- Screw: M2.6
- Wire strip length: 5-6mm
- Withstanding Voltage: 1.6KV
- Operating temperature: -40°C to +115°C
- Soldering temperature: 260°C±5°C/5 Sec
- Safety Approval: cULus

N = Number of poles  
 Dim L=Nx3.5  
 Dim P=(N-1)x3.5

| Poles  | Dim. | Dim L | Dim P |
|--------|------|-------|-------|
| 2-6p   |      | ±0.15 | ±0.10 |
| 7-12p  |      | ±0.20 | ±0.15 |
| 13-18p |      | ±0.25 | ±0.20 |
| 19-24p |      | ±0.30 | ±0.25 |

PART NO.: KZ xx 1 0 x 1 00J0 G

| End stackable | No. of poles | Body Color          | RoHS compliant  |
|---------------|--------------|---------------------|-----------------|
| 02            | 2 poles      | 0 Black (RAL9005)   | (lead<4%)       |
| 03            | 3 poles      | 2 Red (RAL3001/D)   | In copper Alloy |
| ...           | ...          | 3 Orange(RAL2011/P) |                 |
| 24            | 24 poles     | 4 Yellow(RAL1018/A) |                 |
|               |              | 5 Green(RAL6018/T)  |                 |
|               |              | 6 Blue (RAL5015/A)  |                 |
|               |              | 8 Grey(RAL7035/D)   |                 |
|               |              | 9 White(RAL1102)    |                 |
|               |              | C Green(RAL6018/U)  |                 |

| mat'l. code        |          |   |   | surface                               | tolerance         | projection                                                                            | product family                           |  |  |  |
|--------------------|----------|---|---|---------------------------------------|-------------------|---------------------------------------------------------------------------------------|------------------------------------------|--|--|--|
| ltr ecn no dr date |          |   |   | ASME Y14.5                            | ASME Y14.5        |  | TERMINAL BLOCK                           |  |  |  |
|                    |          |   |   | tolerances unless otherwise specified |                   | MM                                                                                    | title                                    |  |  |  |
|                    |          |   |   | angles                                | X.±0.5            |                                                                                       | TERMINAL BLOCK                           |  |  |  |
|                    |          |   |   | flat                                  | X.X±0.3           |                                                                                       | WIRE PROTECTOR,ROUND HOLE,45D WIRE INLET |  |  |  |
|                    |          |   |   | X°±1°                                 | X.XX±0.1          | scale                                                                                 | dwg no sheet 1 of 1 size                 |  |  |  |
|                    |          |   |   | dr                                    | EVIN ZHONG 040314 |  | KZxx10x100J0G A4                         |  |  |  |
|                    |          |   |   | enr                                   | EVIN ZHONG 040314 |                                                                                       |                                          |  |  |  |
|                    |          |   |   | chr                                   | HANKE FENG 040314 |                                                                                       |                                          |  |  |  |
|                    |          |   |   | appd                                  | SHI JUN 040314    |                                                                                       | type CUSTOMER Drawing                    |  |  |  |
| sheet index        | revision | A | 1 |                                       |                   |                                                                                       |                                          |  |  |  |