

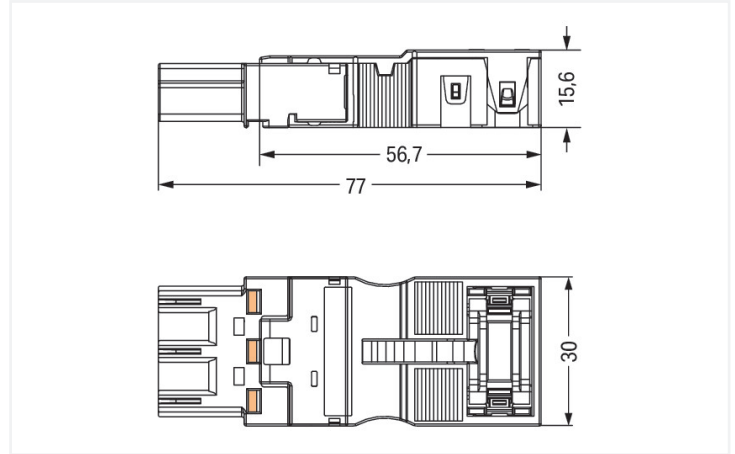
Data Sheet | Item Number: 770-213/035-000

Plug; with strain relief housing; 3-pole; Cod. A; 4,00 mm²; black

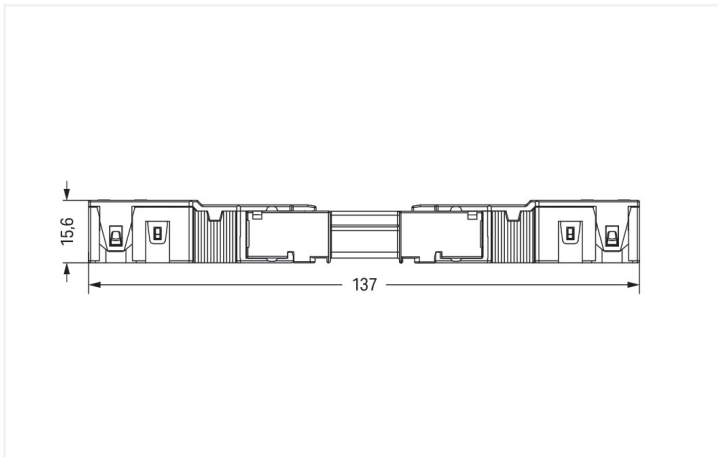
<https://www.wago.com/770-213/035-000>



Color: ■ black



Dimensions in mm



Dimensions in mm
Overall length when mated

Male connector/plug WINSTA® MIDI A coding

The WINSTA® MIDI male connector/plug with protection type IP2XD supports rapid, correct installation. WAGO pluggable installation connectors are useful when specifications repeat or are distributed on a specified pattern, for example for installing grid lighting or flush-mount lighting. The coding options reduce installation errors, allowing fast, secure wiring of all components. Thanks to the color coding and mechanical A coding of WINSTA® MIDI pluggable installation connectors, you can clearly distinguish different circuits. This pluggable installation connector can be used for a current load of up to 25 A. Therefore, it can also be used for high power loads. WINSTA® MIDI with Push-in CAGE CLAMP® spring pressure connection technology is used in can be found in a variety of projects you can use for quick, easy, secure, tailored installation. The strip length is 48 mm.

WINSTA® MIDI solutions for your electrical installation – protected against mismatching and maintenance-free

The WINSTA® Pluggable Connection System is perfectly tailored to the very strict requirements of building installation. It makes electrical installation pluggable, and thus faster, even more reliable, and error-free. Use of this pre-assembled system reduces assembly times and installation errors at the construction site. Take advantage of the pluggable version of our maintenance-free spring pressure connection technology too! Plan your installation with with protection type IP2XD from WAGO.

- pluggable installation connectors with protection against mismatching
- for automation controllers
- with A coding for a large number of uses
- exact dimensions
- fast, secure installation

This item includes:



Item No.: 770-213

1

Item No.: 770-503/035-000

1

Plug; 3-pole; Cod. A; black

Strain relief housing; 3-pole; with locking clip; for 1 cable; 7.0 ... 11.5 mm; 48 mm; black

Notes

General safety information

1. Only to be used by a qualified electrician or by a person electrically instructed for the task (EIP per DIN VDE 0105-100).
 2. Do not install while energized or under load.
 3. Use only for its intended purpose.
 4. Observe applicable national regulations, standards and directives.
 5. Observe the technical specifications of the products.
 6. Ensure correct polarity assignment.
 7. Do not use damaged or contaminated components.
 8. Observe conductor types, conductor cross-sections, strip lengths and cable diameters.
 9. Insert conductors up to the stop.
 10. Use only with locking lever and strain relief.
 11. Use original accessories only.
- To be sold only with installation instructions!**

Electrical data

| Ratings per | IEC/EN 60664-1 | | |
|---------------------------------|----------------|-----|----|
| | III | III | II |
| Overvoltage category | III | III | II |
| Pollution degree | 3 | 2 | 2 |
| Nominal voltage | 250 V | - | - |
| Rated impulse withstand voltage | 4 kV | - | - |
| Rated current | 25 A | - | - |

| Approvals per | UL 1977 |
|---------------|---------|
| Rated voltage | 600 V |
| Rated current | 23 A |

General information

| | |
|----------------------------|--|
| Note on contact resistance | approx. 1 mΩ of contact resistance approx. 0.25 mΩ contact transition plug/ socket |
|----------------------------|--|

Connection Data

| | |
|----------------------------|----------------------|
| Clamping units | 6 |
| Total number of potentials | 3 |
| PE function | Preceding PE contact |

| Connection 1 | |
|--|----------------------------------|
| Connection technology | Push-in CAGE CLAMP® |
| Actuation type | Operating tool Push-in |
| Nominal cross-section | 4 mm² / 12 AWG |
| Solid conductor | 0.5 ... 4 mm² / 20 ... 12 AWG |
| Solid conductor; push-in termination | 1.5 ... 4 mm² / 16 ... 12 AWG |
| Stranded conductor | 0.5 ... 2.5 mm² / 20 ... 14 AWG |
| Fine-stranded conductor | 0.5 ... 4 mm² / 20 ... 12 AWG |
| Fine-stranded conductor; with insulated ferrule | 0.25 ... 1.5 mm² / 20 ... 16 AWG |
| Fine-stranded conductor; with uninsulated ferrule | 0.25 ... 2.5 mm² / 20 ... 14 AWG |
| Fine-stranded conductor; with ferrule; push-in termination | 1.5 mm² / 16 AWG |
| Strip length | 9 mm / 0.35 inches |
| Pole number | 3 |
| Connectable sheathed cable diameter | 7 ... 11.5 mm |
| Conductor entry direction to mating direction | 0° |
| Strip length (outer insulation) | 48 mm |

Physical data

| | |
|-------------|------------------------|
| Pin spacing | 10 mm / 0.394 inches |
| Width | 30 mm / 1.181 inches |
| Height | 15.6 mm / 0.614 inches |
| Depth | 77 mm / 3.031 inches |

Mechanical data

| | |
|---|---|
| Use | General mains applications |
| Coding | A |
| Variable coding | Yes |
| Marking | N ⊕ L |
| Potential marking | N ⊕ L |
| Mating force of a plug-in connection | approx. 20 ... 70 N (depending on pole number) |
| Retention force of a plug-in connection | Locked: > 80 N |
| Unmating force of a plug-in connection | Unlocked: approx. 20 ... 70 N (depending on pole number) |
| Number of mating cycles | 200, without resistive load |
| Protection type | IP2XD; When mated and secured with a strain relief housing: IP2xC (These compact connectors are not designed for use in open, easily accessible areas!) |
| Suitable | for quick assembly |

Plug-in connection

| | |
|------------------------------------|--|
| Contact type (pluggable connector) | Male connector/plug |
| Connector (connection type) | for conductor |
| Mismating protection | Yes |
| Note on mismating protection | All WINSTA® components are 100% protected against mismating when: a.) plugging different numbers of poles b.) plugging while rotated 180 c.) plugging while laterally staggered d.) plugging one pole |
| Locking lever | Can be retrofitted |
| Locking of plug-in connection | Locking lever |
| Note on locking system | All connectors for mounted installations (snap-in versions for lighting fixtures or devices, all types of PCB and distribution connectors) are factory-equipped with locking levers to ensure plugs and sockets are securely locked. Additional locking levers are only required for flying leads (plug/socket). |
| Strain relief | Strain relief house, for quick assembly |

Material data

| | |
|------------------------------------|--|
| Note (material data) | Information on material specifications can be found here |
| Color | black |
| Cover color | gray |
| Material group | I |
| Insulation material (main housing) | Polyamide (PA66) |
| Flammability class per UL94 | V0 |
| Clamping spring material | Chrome-nickel spring steel (CrNi) |
| Contact material | Copper or copper alloy; surface-treated |
| Contact Plating | Tin |
| Fire load | 0.402 MJ |
| Connector color | black |
| Strain relief color | black |
| Weight | 18.1 g |

Environmental requirements

| | |
|--|--|
| Processing temperature | -5 ... +40 °C |
| Continuous operating temperature | -35 ... +85 °C |
| Note on continuous operating temperature | Insulating parts for temperatures ≤ 105 °C |

Commercial data

| | |
|-----------------------|---------------|
| PU (SPU) | 25 pcs |
| Packaging type | Box |
| Country of origin | DE |
| GTIN | 4055143209151 |
| Customs tariff number | 85366990990 |

Product Classification

| | |
|-------------|----------------------|
| UNSPSC | 39121402 |
| eCl@ss 10.0 | 27-44-06-05 |
| eCl@ss 9.0 | 27-44-06-05 |
| ETIM 9.0 | EC002560 |
| ETIM 10.0 | EC002560 |
| ECCN | NO US CLASSIFICATION |

Environmental Product Compliance

| | |
|------------------------|-------------------------|
| RoHS Compliance Status | Compliant, No Exemption |
|------------------------|-------------------------|

Approvals / Certificates

General approvals **Approvals for marine applications**



| Approval | Standard | Certificate Name |
|--|----------|------------------|
| cURus Underwriters Laboratories Inc. | UL 1059 | E 45172 |

| Approval | Standard | Certificate Name |
|-----------------------|-----------|------------------|
| LR Lloyds Register | IEC 61984 | LR22429487TA |

Downloads

Environmental Product Compliance

Compliance Search

| | |
|---|-------------------|
| Environmental Product Compliance 770-213/035-000 | ↓ |
|---|-------------------|

Documentation

| Bid Text | | | |
|------------------------------------|------------|-----------------|--|
| 770-213/035-000 | 19.02.2019 | xml 3.06 KB | |
| 770-213/035-000 | 08.06.2015 | doc 23.50 KB | |
| ausschreiben.de 770-213/035-000 | | | |

CAD/CAE-Data

| CAD data | |
|---------------------------------|--|
| 2D/3D Models 770-213/035-000 | |

1 Compatible Products

1.1 System counterpart

1.1.1 Cable assembly



Item No.: 771-9993/106-101
pre-assembled connecting cable; Eca; Socket/open-ended; 3-pole; Cod. A; H05VV-F 3G 1.5 mm²; 1 m; 1,50 mm²; black

Item No.: 771-9993/006-101
pre-assembled interconnecting cable; Eca; Socket/plug; 3-pole; Cod. A; H05VV-F 3G 1.5 mm²; 1 m; 1,50 mm²; black

1.1.2 Distribution box



Item No.: 899-631/181-000
Distribution box; 230 V + DALI; 2 inputs; 6 outputs; Cod. A, I; MINI, MIDI; black



Item No.: 899-631/405-000
Distribution box; 230 V + SMI; 2 inputs; 6 outputs; Cod. A, B; MINI, MIDI; black



Item No.: 899-631/315-000
Distribution box; Cable and device protection; 1 input; 4 outputs; Cod. A; MIDI; black



Item No.: 899-631/305-000
Distribution box; Crossover switching; 1 input; 5 outputs; Cod. A, B, S; MIDI; black



Item No.: 899-631/309-000
Distribution box; Motion/presence detector; 1 input; 3 outputs; Cod. A, S; MIDI; black



Item No.: 899-631/180-000
Distribution box; Motion/presence detector; 1 input; 5 outputs; Cod. A; MIDI; black



Item No.: 899-631/386-000
Distribution box; Series switching; 1 input; 7 outputs; Cod. A, S; MIDI; black



Item No.: 899-631/334-000
Distribution box; Single-phase current (230 V); 1 input; 13 outputs; Cod. A; MIDI; black



Item No.: 899-631/476-000
Distribution box; Single-phase current (230 V); 1 input; 4 outputs; Cod. A; MIDI; black



Item No.: 899-631/104-000
Distribution box; Single-phase current (230 V); 1 input; 7 outputs; Cod. A; MIDI; black



Item No.: 899-631/311-000
Distribution box; Single-phase current (230 V); 2 inputs; 6 outputs; Cod. A, P; MIDI; black



Item No.: 899-631/327-000
Distribution box; Single-phase current (230 V); 2 inputs; 6 outputs; Cod. A; MIDI; black



Item No.: 899-631/363-000
Distribution box; Single-pole switch circuit; 1 input; 5 outputs; Cod. A, S; MIDI; black



Item No.: 899-631/450-000
Distribution box; supply cable entry; 6 outputs; Cod. A; MIDI; black



Item No.: 899-632/101-000
Distribution box; Surge switch circuit; 1 input; 4 outputs; Cod. A, S; MIDI; black



Item No.: 899-632/138-000
Distribution box; Surge switch circuit; 1 input; 4 outputs; Cod. A, S; MIDI; black



Item No.: 899-631/346-000
Distribution box; Three-phase to single-phase current (400 V/230 V); 1 input; 4 outputs; Cod. A; MIDI; black



Item No.: 899-631/149-000
Distribution box; Three-phase to single-phase current (400 V/230 V); 1 input; 6 outputs; Cod. A; MIDI, MAXI; black



Item No.: 899-631/105-000
Distribution box; Three-phase to single-phase current (400 V/230 V); 1 input; 6 outputs; Cod. A; MIDI; black



Item No.: 899-631/100-000
Distribution box; Three-phase to single-phase current (400 V/230 V); 1 input; 7 outputs; Cod. A; MIDI; black

1.1.2 Distribution box



Item No.: 899-631/492-000

Distribution box; Three-phase to single-phase current (400 V/230 V); 1 input; 7 outputs; Cod. A; MIDI; black



Item No.: 899-631/302-000

Distribution box; Three-phase to single-phase current (400 V/230 V); 2 inputs; 6 outputs; Cod. A, P; MIDI; black



Item No.: 899-631/349-000

Distribution box; Three-phase to single-phase current (400 V/230 V); 2 inputs; 6 outputs; Cod. A; MIDI; black



Item No.: 899-631/338-000

Distribution box; Three-phase to single-phase current (400 V/230 V); supply cable entry; 1 input; 6 outputs; Cod. A; MIDI; black

Item No.: 899-631/308-000

Distribution box; Two-way circuit; 1 input; 5 outputs; Cod. A, S; MIDI; black

Item No.: 899-631/189-000

Distribution box; Two-way circuit; 1 input; 7 outputs; Cod. A, S; MIDI; black

1.1.3 Distribution connector



Item No.: 770-607

3-way distribution connector; 3-pole; Cod. A; 1 input; 3 outputs; black



Item No.: 770-608

5-way distribution connector; 3-pole; Cod. A; 1 input; 5 outputs; outputs on both sides; black



Item No.: 770-638

Distribution connector for switches; Single-pole and throttle two-way circuit; 3-pole; Cod. A/S; 1 input; 5 outputs; black



Item No.: 770-637

Distribution connector for switches; Single-pole switch and series circuit; 3-pole; Cod. A/S; 1 input; 5 outputs; black



Item No.: 770-633

h-distribution connector; 3-pole; Cod. A; 1 input; 2 outputs; 2 locking levers; black



Item No.: 770-635

h-distribution connector; 3-pole; Cod. A; 1 input; 2 outputs; outputs on both sides; 3 locking levers; for flying leads; black



Item No.: 770-634

h-distribution connector; 3-pole; Cod. A; 1 input; 2 outputs; outputs on one side; 2 locking levers; black



Item No.: 770-636

h-distribution connector; 3-pole; Cod. A; 1 input; 2 outputs; outputs on one side; 3 locking levers; for flying leads; black



Item No.: 770-606

T-distribution connector; 3-pole; Cod. A; 1 input; 2 outputs; 2 locking levers; black



Item No.: 770-615

T-distribution connector; 3-pole; Cod. A; 1 input; 2 outputs; 3 locking levers; for flying leads; black

Item No.: 770-611

Three-phase to single-phase distribution connector; with phase selection; 5-pole/3-pole; Cod. A; 1 input; 2 outputs; with cable connection on the input side; black



Item No.: 770-612

Three-phase to single-phase distribution connector; with phase selection; 5-pole/3-pole; Cod. A; 1 input; 2 outputs; with cable connection on the input side; black



Item No.: 770-640

Three-phase to single-phase distribution connector; with phase selection; 5-pole/3-pole; Cod. A; 1 input; 5 outputs; black

1.1.4 Female connector/socket



Item No.: 770-703

Snap-in socket; 3-pole; Cod. A; black



Item No.: 770-703/009-000

Snap-in socket; with protruding mating face; 3-pole; Cod. A; black



Item No.: 770-803/011-000

Socket for PCBs; angled; 3-pole; Cod. A; black



Item No.: 770-803

Socket for PCBs; straight; 3-pole; Cod. A; black



Item No.: 770-203

Socket; 3-pole; Cod. A; black



Item No.: 770-103

Socket; with strain relief housing; 3-pole; Cod. A; 4,00 mm²; black



Item No.: 770-203/035-000

Socket; with strain relief housing; 3-pole; Cod. A; 4,00 mm²; black

1.1.5 Tap-off module



Item No.: 772-263

Tap-off module; for flat cable; 5 x 2.5 mm² + 2 x 1.5 mm²; 3-pole; Cod. A; with cable connection on the output side; black

1.2 Required Accessories

1.2.1 Locking system

1.2.1.1 Locking system



Item No.: 770-101
Locking lever; for flying leads; for manual operation; black



Item No.: 770-121
Locking lever; for flying leads; for manual operation; white



Item No.: 770-111
Locking lever; for flying leads; for tool operation; black



Item No.: 770-131
Locking lever; for flying leads; for tool operation; white

1.3 Optional Accessories

1.3.1 Coding

1.3.1.1 Coding



Item No.: 770-401
Coding pin; for plugs; Plastic; gray

1.3.2 Cover

1.3.2.1 Cover



Item No.: 770-360
Lockout cap; for plugs; 5-pole; separable; yellow

1.3.3 Marking

1.3.3.1 Marker



Item No.: 770-450/000-006
Marker card; Plastic; blue



Item No.: 770-450/000-001
Marker card; Plastic; green



Item No.: 770-450/000-012
Marker card; Plastic; orange



Item No.: 770-450/000-005
Marker card; Plastic; red



Item No.: 770-450
Marker card; Plastic; white



Item No.: 770-450/000-002
Marker card; Plastic; yellow

1.3.4 Shield termination

1.3.4.1 Shield termination



Item No.: 770-523
Shield connecting plate; 3-pole; for sockets and plugs; silver-colored

1.3.5 Tool

1.3.5.1 Operating tool



Item No.: 770-383

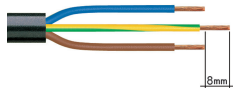
Operating tool; 3-way; green

Item No.: 210-719

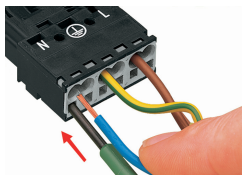
Operating tool; Blade: 2.5 x 0.4 mm; with a partially insulated shaft

Installation Notes

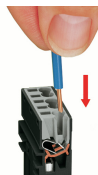
Conductor termination



1. Strip length, outer insulation = 35 mm (2-pole), 55 mm (3- to 5-pole)
2. Strip length = 9 mm
3. Extended ground conductor = 8 mm



To terminate fine-stranded conductors, open the clamping unit via screwdriver (2.5 mm blade width) and insert a stripped conductor until it hits the backstop.

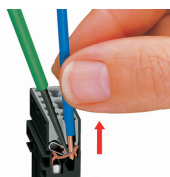


Insert the stripped solid conductor until it hits the backstop.



To terminate fine-stranded conductors, open the clamping unit via screwdriver (2.5 mm blade width) and insert a stripped conductor until it hits the backstop.

Conductor removal

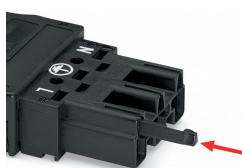


To remove the conductor, actuate the clamp via screwdriver (2.5 mm blade width) and pull out the conductor.

Coding

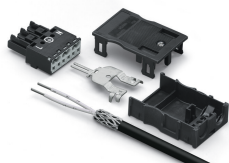


Simply cut off the coding pin from the socket.



Insert coding pin into plug (break first) until it engages.

Shield termination



Connector with shield termination



Apply the shield to the sheathed cable.
Strip length, outer insulation = 55 mm
Shield length = 10 mm



Push the shield connecting plate into the connector until fully inserted.



First insert the wired connector into a strain relief housing, then snap cover and tighten screw.

Subject to changes. Please also observe the further product documentation!

Current addresses can be found at: www.wago.com