



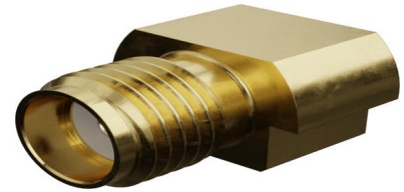
Part Number : [732511140](#)

Product Description : SMA Jack, Straight, PCB Receptacle, End Launch, Surface Mount, 4.75mm SMT Contact Tail Length, Gold (Au) Plated Body, Tray, 50 Ohms

Series Number : 73251

Status : Active

Product Category : RF / Coaxial Connectors



Documents and Resources

Drawings

[732511140 sd.pdf](#)

3D Models and Design Files


[STEP AP242](#)

[SOLIDWORKS](#)

[Creo](#)

Product Environment Compliance

Compliance

GADSL/IMDS	Not Relevant
China RoHS	 per SJ/T 11365-2006
EU ELV	Not Relevant
Low-Halogen Status	Low-Halogen per IEC 61249-2-21
REACH SVHC	Contains Lead per D(2020)4578-DC (25 June 2020)
EU RoHS	Compliant with Exemption 6(c) per EU 2015/863

[Compliance Statements](#)

- EU RoHS
- REACH SVHC
- Low-Halogen

[Industry Documents](#)

- IPC 1752A Class C
- IPC 1752A Class D
- Molex Product Compliance Declaration
- IEC-62474
- chemSHERPA (xml)

Substances of Interest

- PFAS

EU RoHS Certificate of Compliance

Additional Product Compliance Information

Part Details

General

Status	Active
Category	RF / Coaxial Connectors
Series	73251
Description	SMA Jack, Straight, PCB Receptacle, End Launch, Surface Mount, 4.75mm SMT Contact Tail Length, Gold (Au) Plated Body, Tray, 50 Ohms
Application	RF
Product Name	SMA
Style	PCB
Type	Subminiature
UPC	822348374908

Electrical

Frequency	18 GHz
Impedance	50Ω
Power / Voltage	VOLTAGE: 500 Vrms@Sea Level

Physical

Cable Attachment	N/A
Gender	Jack
Keying to Mating Part	N/A
Net Weight	3.021/g
Orientation	Straight

Packaging Type	Tray
Panel Mount	No
Panel Mount Method	N/A
PCB Mounting	Surface Mount
PCB Thickness - Recommended	N/A
Reverse Polar	No
Wire/Cable Type	N/A

Solder Process Data

Max-Duration	10
Lead-Free Process Capability	REFLOW
Max-Cycle	3
Max-Temp	260

This document was generated on May 13, 2026