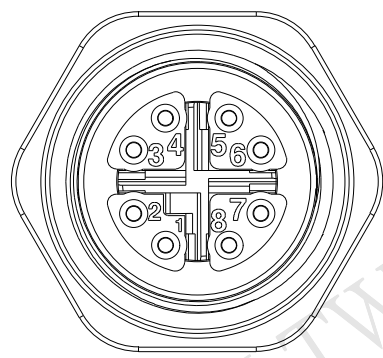
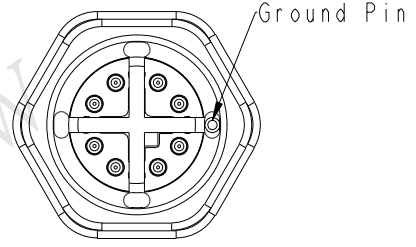
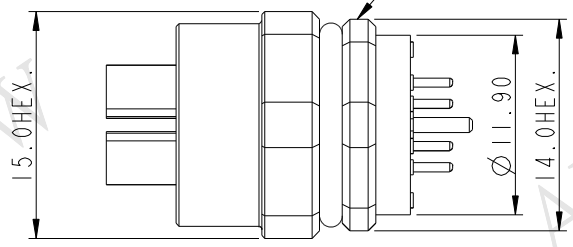
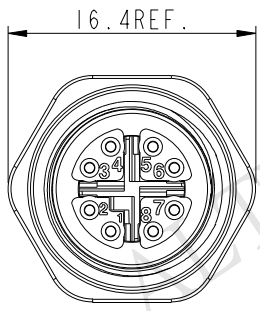
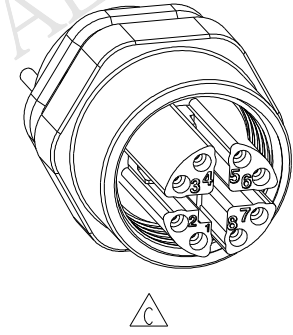
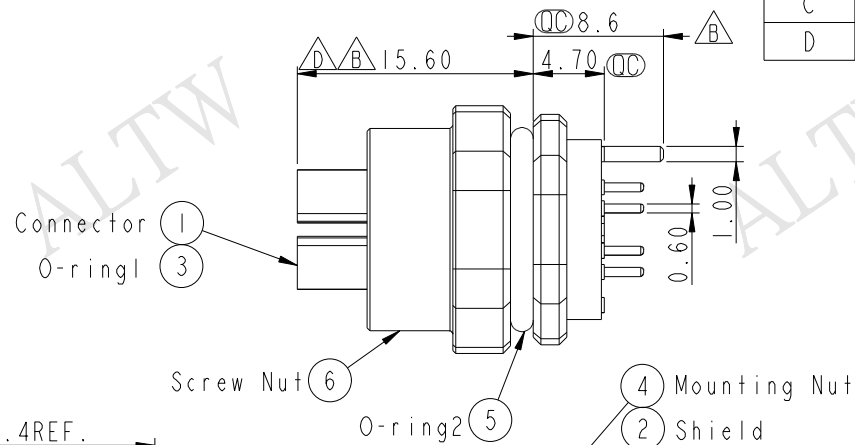
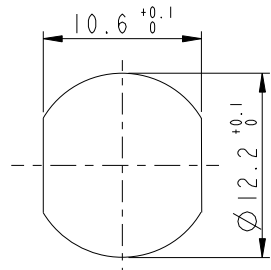


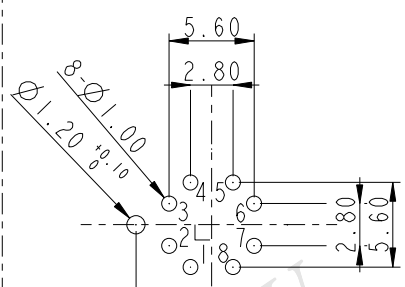
REV.	ECN NO.	DATE	SIGN	DESCRIPTION
B	LE316B0094	2016/10/26	Cary Liu	Improvement Product
C	LEN1720011	2017-02-08	Frank Deng	Change Rated Voltage
D	LEN1730161	2017-03-13	Spring Liu	Update the note & Dimension



Conn.
Pin Assignment
Front View



Recommended
Panel Cut-out



Recommended
PCB Lay-out (Conn. Side)

- Note:
- * CC Important Dimension To Check.
 - * Waterproof Rate: IP67 (Mated Condition)
 - * Rated Voltage: 50V AC, 60V DC
 - * Rated Current @40°C: 0.5A
 - * Connector: PA, Black
 - * Female Pin: Copper Alloy, Gold Plated
 - * Mounting Nut: Zinc Alloy, Nickel Plated
 - * Shield: Brass, Nickel Plated
 - * Screw Nut: Zinc Alloy, Nickel Plated
 - * O-Ring1: Silicon, Gray
 - * O-Ring2: Silicon, Gray
 - * For Panel Thickness Range: 2.0~3.0mm
 - * For PCB Thickness Max. 1.6mm

UNIT:mm TOLERANCE .X ±0.25 .XX ±0.1 .XXX ±0.05 ANGLES ±1°	TITLE M12 X-code Female Receptacle Straight, Thru-hole			Amphenol LTW 安費諾亮泰企業股份有限公司		ITEM NO. MSXS-08PFFP-SF7001	DRAWN BY Frank Deng	DATE 2017-03-13
	SCALE 2:1	SIZE A4	SHEET 1 OF 1			DWG NO. MSXS-08PFFP-SF7001	CHECKED BY Spring Liu	DATE 2017-03-13
	REV. D	WC-REV. A.4	CC : Inspection item	CUSTOMER ALTW	APPROVED BY Kevin Hu	DATE 2017-03-13		
				FMW10702-01-02A1				

THIS DOCUMENT IS SUBJECT TO CHANGE WITHOUT NOTICE. IT IS CONFIDENTIAL AND A PROPERTY OF AMPHENOL LTW. DISCLOSURE TO THIRD PARTY HAS TO BE AUTHORIZED BY AMPHENOL LTW.