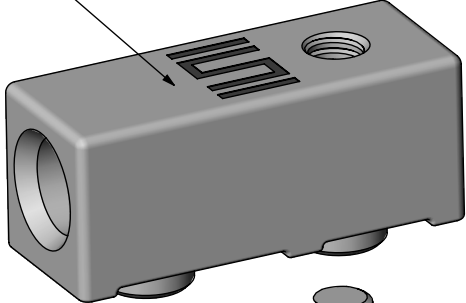


DO NOT  
SCALE FROM  
THIS PRINT

GP-S-01-01



DESIGNED & DIMENSIONED  
IN INCHES[MILLIMETERS]

GPSK-XX-XX

SOCKET

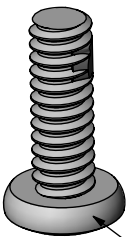
LEAD STYLE

-01: 4 THRU 10 ROW SEAF-RA  
\*-02: 4 THRU 10 ROW SEAF-RA

THREADING  
-01: M3 x 0.5

\* = NOT RELEASED FOR PRODUCTION

GPSK-01-01 SHOWN



MS-05-02-L

TABLE 1		
	"A"	"B"
MS-04-02-L	.232	.157
MS-05-02-L	.389	.315

TABLE 2		
	"C"	"D"
GP-S-01-01	0.75	.375
GP-S-02-01	1.20	.800

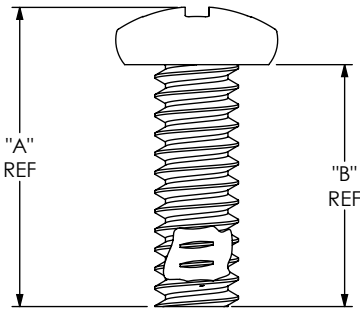


FIG 1  
MS-XX-02-L

GP-S-02-01

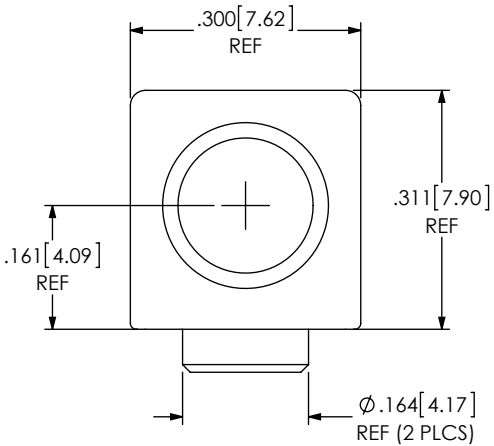
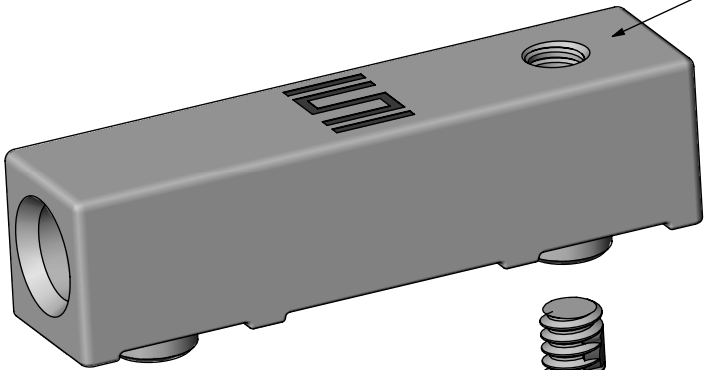
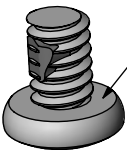
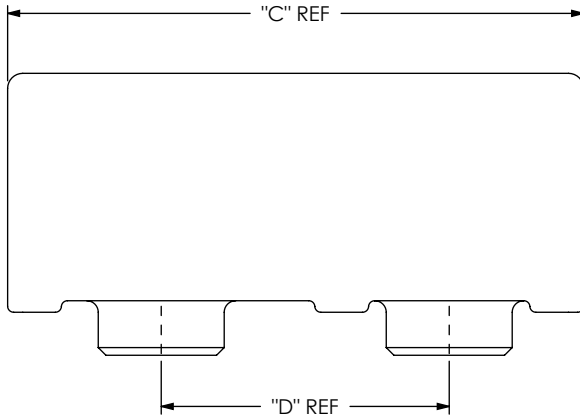
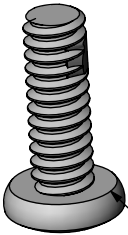


FIG 2  
GP-S-XX-01



MS-04-02-L



MS-05-02-L

GPSK-02-01 SHOWN

NOTES:

1. PARTS TO BE PACKAGED IN BAGS AS A KIT.
2. GPSK-01-01 KIT TO INCLUDE ONE GP-S-01-01 AND ONE MS-05-02-L.  
GPSK-02-01 KIT TO INCLUDE ONE GP-S-02-01, ONE MS-05-02-L AND ONE MS-04-02-L.
3. PARTS TO BE USED WITH PCB THICKNESSES OF .062" TO .125".

UNLESS OTHERWISE SPECIFIED,  
DIMENSIONS ARE IN INCHES.  
TOLERANCES ARE:  
DECIMALS ANGLES  
.XX: ±.01 [.3] 2°  
.XXX: ±.005 [.13]  
.XXXX: ±.0020 [.051]

PROPRIETARY NOTE

THIS DOCUMENT CONTAINS INFORMATION  
CONFIDENTIAL AND PROPRIETARY TO  
SAMTEC, INC. AND SHALL NOT BE REPRODUCED  
OR TRANSFERRED TO OTHER DOCUMENTS OR  
DISCLOSED TO OTHERS OR USED FOR ANY  
PURPOSE OTHER THAN THAT WHICH IT WAS  
OBTAINED WITHOUT THE EXPRESSED WRITTEN  
CONSENT OF SAMTEC, INC.

**samtec**

520 PARK EAST BLVD, NEW ALBANY, IN 47150  
PHONE: 812-944-6733 FAX: 812-948-5047  
e-Mail: info@SAMTEC.com code 55322

MATERIAL: DO NOT SCALE DRAWING  
SOCKET: ZAMAK 3  
SCREW: 303 STAINLESS STEEL

SHEET SCALE: 3:1

DESCRIPTION:

SEAF - RA GPK OPTION KIT

DWG. NO.

GPSK-XX-XX

BY: VICKY Z

12/23/2010

SHEET 1 OF 1