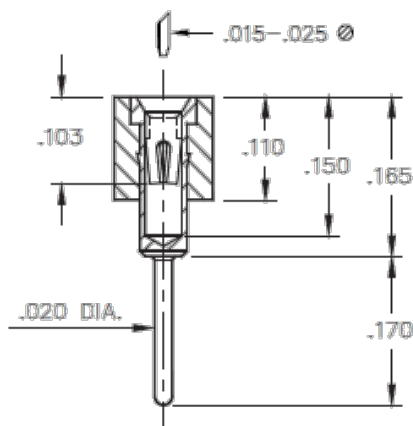




PRODUCT NUMBER: 511-13-175-16-006003

www.mill-max.com  
DATA SHEET

### SERIES 511 (Long Solder Tail)



#### General Info

Description <sup>1</sup> :	Long Solder Tail PGA Socket
Type:	PGA
Category:	Machined Pin Socket
Mounting Style:	Through Hole Solder Mount
# Pins:	175
Packaging <sup>2</sup> :	Packaged in Box or Tube
ECCN:	Contact Factory
HTSUS:	8536.90.4040
Product Lifecycle:	Active
Country Of Origin:	USA

## 511-13-175-16-006003- SPECIFICATIONS

#### Environmental Specs

Temperature Range <sup>3</sup> :	-55/+125° C
RoHS <sup>4</sup> :	Yes
Moisture Sensitivity Level (MSL):	1 (Unlimited)
REACH Status:	REACH Unaffected

#### Materials

Loose Pin/Receptacle # (Material):	0134 (Brass Alloy)
Shell Plating:	10 μ" Gold over 100 μ" Nickel
Inner Contact #:	43
# Contact Fingers:	6
Inner Contact Material:	Beryllium Copper
Inner Contact Plating:	30 μ" Gold over 50 μ" Nickel
Insulator Material:	High Temp Thermoplastic

## NOTES:

### 1. Standard Tolerances:

Assembly tolerance:  $\pm .010"$  (.25mm)

Insulator length:  $\pm .005"$  (.13mm)

Insulator width:  $\pm .005"$  (.13mm)

Insulator height:  $\pm .005"$  (.13mm)

Pin Length:  $\pm .005"$  (.13mm)

Pin Diameter:  $\pm .002"$  (.051mm)

Pin Angle:  $\pm 2^\circ$

Co-planarity of SMT connectors: .005" (.13mm) up to 1" (25.4mm) in connector length

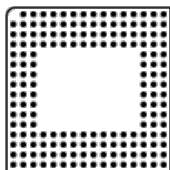
Insulator Flatness: .005" (.13mm) up to 1" (25.4mm) in connector length

### 2. Not all part numbers in the series may be packaged in tubes. Some specific part numbers may be packaged in a box.

### 3. Per IEC 60512-11-(4,-9,-10,-12)

### 4. Mill-Max products labeled with the RoHS symbol are compliant with all three ROHS Directives. All of our products previously described as RoHS (2002/95/EC) and RoHS-2 (2011/65/EC) are also compliant with RoHS-3 (2015/863/EU).

## ADDITIONAL PARTS, PACKAGING, & ASSEMBLY INFO



175-16-006

## ADDITIONAL NOTES AND SPECIFICATIONS

In the interest of improved design, quality and performance, Mill-Max reserves the right to make changes in its specifications without prior notice. Specifications and tolerances are provided wherever possible. The tolerance on dimensions of critical to function features is typically held tighter than the stated standard tolerances, such as press-fits, holes and lengths affecting the coplanarity of SMT products. Due to the wide variety of interconnects Mill-Max offers, the specific tolerances vary from product to product. If you need information regarding the tolerance of a particular part, please contact Technical Services.

## RELATED LINKS AND DOCUMENTS

Environmental Compliance: ( <https://www.mill-max.com/rohs> )