

Part Number : [1210120007](#)

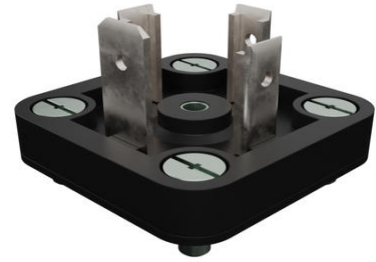
Product Description : mPm DIN Base, Form A-18mm, B14 Base, 2 Pole Plus Ground Terminal, 250V AC/300V DC, Black, Nitrile Gasket with Screw

Series Number : 121012

Status : Active

Product Category : Circular Industrial Connectors

Engineering Part Number : B143000N2



Documents and Resources

Drawings

[1210120007 sd.pdf](#)

[STEP AP242](#)

[SOLIDWORKS](#)

[Creo](#)


Specifications

[PK-121013-B14-001.pdf](#)

[STR-1467-001.pdf](#)

Product Environment Compliance

Compliance

GADSL/IMDS	Not Relevant
China RoHS	 per SJ/T 11365-2006
EU ELV	Not Relevant
Low-Halogen Status	Low-Halogen per IEC 61249-2-21
REACH SVHC	Contains Lead per D(2025)4165-DC (25 June 2025) SCIP:39c8a98f-d6c7-4a6c-b0c7-2a0594051176
EU RoHS	Compliant with Exemption 6(c) per EU 2015/863

Compliance Statements

- EU RoHS

- REACH SVHC
- Low-Halogen

Industry Documents

- IPC 1752A Class C
- IPC 1752A Class D
- Molex Product Compliance Declaration
- IEC-62474
- chemSHERPA (xml)

Substances of Interest

- PFAS

EU RoHS Certificate of Compliance

Additional Product Compliance Information

UKCA - Declaration of Conformity

CE - Declaration of Conformity

Part Details

General

Status	Active
Category	Circular Industrial Connectors
Series	121012
Description	mPm DIN Base, Form A-18mm, B14 Base, 2 Pole Plus Ground Terminal, 250V AC/300V DC, Black, Nitrile Gasket with Screw
IP Rating	IP65, IP67
Product Name	mPm
Type	Field Attachable Connector
UPC	883906322168

Electrical

Current - Maximum per Contact	16.0A
Voltage - Maximum	250V AC / 300V DC

Physical

Cable Diameter	N/A
Coupling Type	N/A
Diagnostics / LEDs	No

Diagnostics Port	No
Form	A - 18mm
Gender	N/A
Keyway	None
Material - Connector Body	Polyamide
Material - Contact	Brass
Material - Coupling Nut	N/A
Material - Plating Mating	Silver
Net Weight	9.570/g
Orientation	Straight
Pitch - Mating Interface	18.00mm
Poles	2
Temperature Range - Operating	-40° to +90°C
Wire Size (AWG)	N/A

This document was generated on May 08, 2026