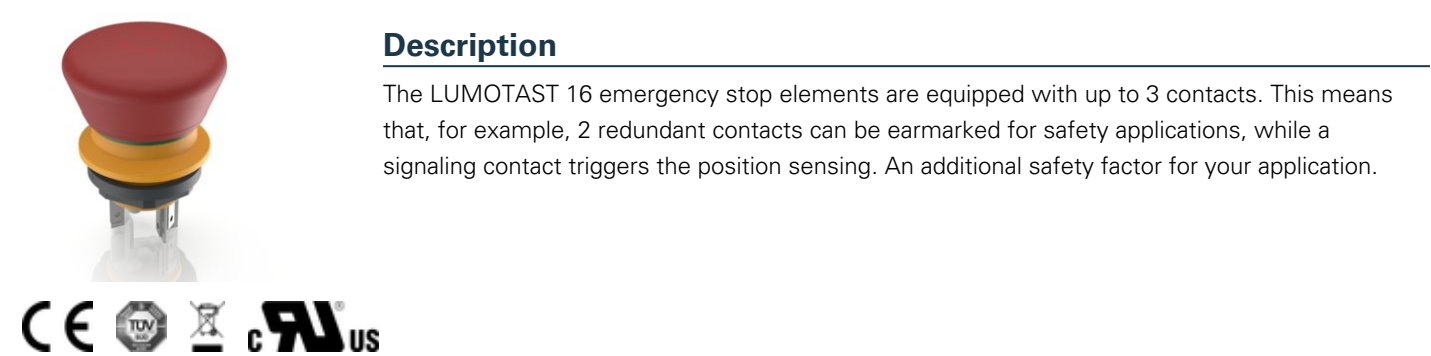


LUMOTAST 16, emergency stop button, 2 NC + 1 NO, Gold, Flat quick-connect terminal 2.8 x 0.5 tin-plated, reset by rotating, arrows red



technical data

> general		direct links
Color of mushroom	red	> RAFI eCatalog
Legending color	red	
Collar color	yellow	
Collar shape	round	
Operating temperature, min.	-25 °C	
Operating temperature, max.	70 °C	
Storage temperature, min.	-40 °C	
Storage temperature, max.	80 °C	
illuminated	No	
Packaging	Box	
Packaging unit	10 pcs.	
net weight	13.4 g	
Operating life	30,000 cycles	
B10	50,000 cycles	
B10d	100,000 cycles	
Degree of protection, front side,	IP65	
according to DIN EN 60529	IP67	
UL Enclosure Type Rating front	type 1	
side		
Environment resistance	IEC 60068-2-27	
	IEC 60068-2-30	
Impact resistance IK	05 side	
	05 frontal	
Minimum order quantity (MOQ)	10 pcs.	
Pollution degree acc. to DIN EN	Pollution degree 2	
61010-1		
RoHS compliant	Yes	
REACH compliant	Yes	
country of origin	HU	
> mounting diameters		

Outside dimension, length	29.6 mm
Outside dimension, width	29.6 mm
Outside dimension, height	40.6 mm
Mounting hole	16.2 mm
Mounting depth	18 mm
Installation height	22.6 mm

> mechanical data

Actuation function	latching
Contact function	2 NC + 1 NO
Contact material	Gold
Resetting	by rotating
Fixing	Threaded ring
Solderability	Yes
Threaded ring torque, max.	0.8 Nm
Terminal on the rear	Flat quick-connect terminal 2.8 x 0.5 tin-plated

> electrical data

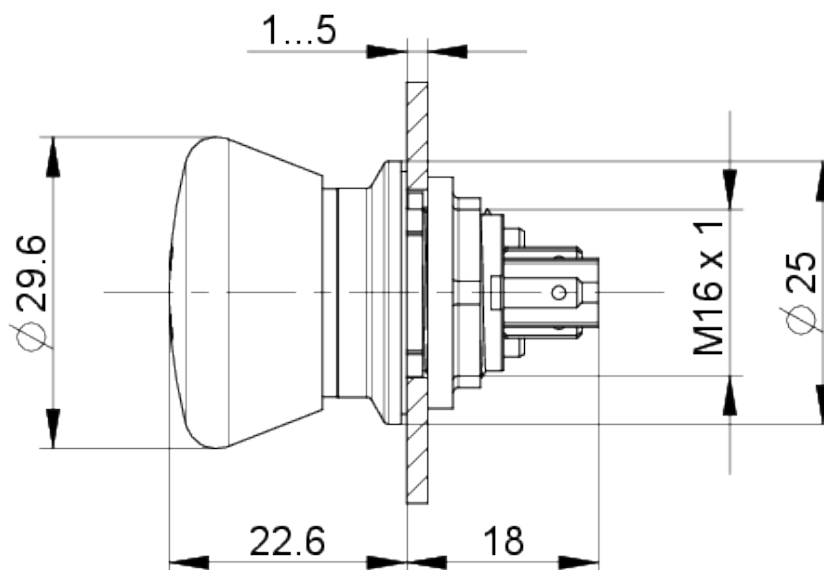
Rated insulation voltage	250 V
Rated voltage, min.	0.02 V
Rated voltage, max.	30 V
Rated voltage, max.	35 V DC / 100 mA
Voltage type	AC / DC
Rated operating voltage	0.02-30 V
Rated current, min.	0.001 A
Rated current, max.	0.1 A
Categories of use	AC-15 DC-13

> Specifications according to UL 60947

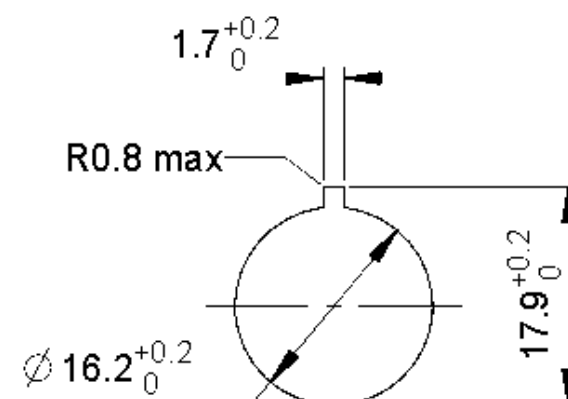
Rated voltage, max.	35 V DC / 100 mA
UL Enclosure Type Rating front side	type 1

drawings

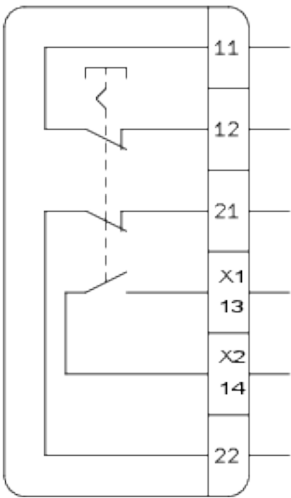
Dimensioned drawing



Mounting hole drawing



Schematic diagram



mounting

LUMOTAST 16, LUMOTAST 22, LUMOTAST 25, RAMO 22, RAMO 30

Betriebsanleitung Not-Halt-Befehlsgeräte
(Original)

Operating Instructions EMERGENCY STOP
Control Units (Translation of the source text)

Mode d'emploi auxiliaires de commande
d'ARRÊT D'URGENCE (Traduction original)

</