

Part Number : [936010263](#)

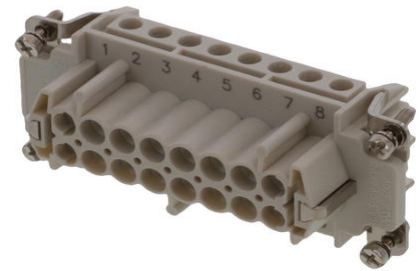
Product Description : Heavy-Duty Screw Terminal Insert, Female, 16-Pole, 16A, Numbered 1-16, with Wire Protection, Silver (Ag) Plated Contacts, Size 16B «77x27»

Series Number : 93601

Status : Active

Product Category : Heavy-Duty Connectors


Engineering Part Number : 7316.6005.0



Documents and Resources

Product Environment Compliance

Compliance

GADSL/IMDS	Not Relevant
China RoHS	 per SJ/T 11365-2006
EU ELV	Not Reviewed per 2000/53/EC
Low-Halogen Status	Low-Halogen per IEC 61249-2-21
REACH SVHC	Contains Lead per D(2025)7771-DC (04 Feb 2026) SCIP:4ffc14a8-1714-4619-9b33-9d585aeb7491
EU RoHS	Compliant with Exemption 6(c) per EU 2015/863

Compliance Statements

- EU RoHS
- REACH SVHC
- Low-Halogen

Industry Documents

- IPC 1752A Class C
- IPC 1752A Class D
- Molex Product Compliance Declaration
- IEC-62474
- chemSHERPA (xml)

Substances of Interest

- PFAS

EU RoHS Certificate of Compliance

Additional Product Compliance Information

UKCA - Declaration of Conformity

CE - Declaration of Conformity

Part Details

General

Status	Active
Category	Heavy Duty Connectors
Series	93601
Description	Heavy-Duty Screw Terminal Insert, Female, 16-Pole, 16A, Numbered 1-16, with Wire Protection, Silver (Ag) Plated Contacts, Size 16B «77x27»
Component Type	Inserts - Screw Terminal
Insert Series	S-E
Product Name	Heavy-Duty Connectors
Standard	CSA C22.2 NO. 182.3, EN 60664-1, EN 61984, UL 1977
UPC	887191880112

Agency

CSA	256883
UL	E249674

Electrical

Current - Maximum per Contact	16.0A
Voltage - Maximum	500V
Wire Protection	Yes

Physical

Component Size	16B «77X27»
Durability (mating cycles max)	700

Gender	Female
Insert Color	Grey
Lock to Mating Part	Yes
Material - Contact	Copper Alloy
Material - Insert	Polycarbonate
Material - Plating	Silver
Net Weight	84.600/g
Number of Rows	2
Packaging Type	Bag
Polarized to Mating Part	Yes
Poles	16
Stripping Length	7.00mm
Temperature Range - Operating	-40° to +125°C
Tightening Test Torque	0.50 Nm
Wire Size (AWG)	14-20
Wire Size mm ²	0.50-2.50

Mates With / Use With

Mates with Part(s)

Description	Part Number
Heavy-Duty Screw Terminal Insert, Male, 16-Pole, 16A, Numbered 1-16, with Wire Protection, Silver (Ag) Plated Contacts, Size 16B «77x27»	<u>936010273</u>

Use with Part(s)

Description	Part Number
Use With	Size 16B «77x27» Hoods and Housings

This document was generated on Apr 28, 2026