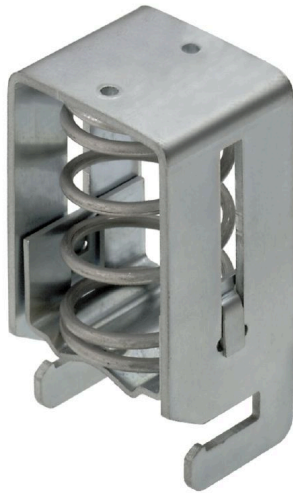


KLBUE CO 4

Weidmüller Interface GmbH & Co. KG
Klingenbergstraße 26
D-32758 Detmold
Germany

www.weidmueller.com

Product image



Shielding and earthing

Our protective earth conductor and shielding terminals featuring different connection technologies allow you to effectively protect both people and equipment from interference, such as electrical or magnetic fields. A comprehensive range of accessories rounds off our range.

General ordering data

Version	Clamping yoke, Clamping yoke, Steel
Order No.	1749161001
Type	KLBUE CO 4
GTIN (EAN)	4032248064458
Qty.	10 items

KLBUE CO 4

Weidmüller Interface GmbH & Co. KG

Klingenbergstraße 26

D-32758 Detmold

Germany

www.weidmueller.com

Technical data

Approvals

ROHS	Conform
------	---------

Dimensions and weights

Depth	56 mm	Depth (inches)	2.2047 inch
Height	32 mm	Height (inches)	1.2598 inch
Width	25 mm	Width (inches)	0.9842 inch
Mounting dimension - width	31 mm	Net weight	53.25 g

Temperatures

Storage temperature	-25 °C...55 °C	Ambient temperature	-5 °C...40 °C
Continuous operating temp., min.	-60 °C	Continuous operating temp., max.	130 °C

Environmental Product Compliance

RoHS Compliance Status	Compliant without exemption		
REACH SVHC	No SVHC above 0.1 wt%		
Product Carbon Footprint	Cradle to gate	0.210 kg CO2 eq.	

Material data

Basic material	Steel	Colour	silver
UL 94 flammability rating	None		

System specifications

Version	For a shield connection	End cover plate required	No
Mounting rail	Busbar		

Additional technical data

Type of fixing	Snap-on	Installation advice	Busbar
Explosion-tested version	No		

Conductors for clamping (rated connection)

Stripping length	25 mm	Type of connection	Spring connection
Cable diameter, max.	28 mm	Cable diameter, min.	15 mm
Connection cross-section, stranded, max.	28 mm ²	Connection cross-section, stranded, min.	15 mm ²

Dimensions

Pitch in mm (P)	25.00 mm
-----------------	----------

General

Installation advice	Busbar	Mounting rail	Busbar
---------------------	--------	---------------	--------

Rating data

Rated cross-section	28 mm ²
---------------------	--------------------

Classifications

ETIM 6.0	EC002020	ETIM 7.0	EC002020
ETIM 8.0	EC002020	ETIM 9.0	EC002020
ETIM 10.0	EC002020	ECLASS 9.0	27-14-11-50
ECLASS 9.1	27-14-11-50	ECLASS 10.0	27-14-11-50
ECLASS 11.0	27-14-11-50	ECLASS 12.0	27-14-11-50
ECLASS 13.0	27-25-01-20	ECLASS 14.0	27-25-01-20
ECLASS 15.0	27-25-01-20		