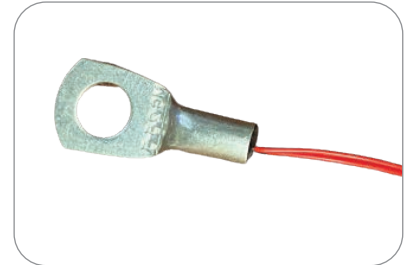


THERMOMETRICS  
A COMMITMENT TO EXCELLENCE

EXATHERMOMETRICS  
EXACTING TEMPERATURE SENSING

# RTS Series

## Ring Terminal Temperature Sensor



RTS Series of Ring Terminal Temperature Sensors consist of an NTC chip thermistor mounted in an eyelet tag for surface temperature measurement.

### Features

- Sensing element electrically isolated from eyelet
- Eyelet configurations to fit M3, M3.5, M4, M5, M6 screw sizes
- Range of wire lengths available from 50 mm to 2,000 mm
- Epoxy coated NTC thermistor chip
- Ring Terminal material tin plated copper
- Lead wire 28AWG XLPE insulated tin plated copper
- RoHS, Reach, Prop65 Compliant

### Applications

- EV/HEV Bus Bars
- Battery Covers
- Thermal Management
- Heat Sinks
- Panel Enclosures

Type RTS Specifications	Value	Units
Operating Temperature	-40 to 125	°C
Storage Temperature	-40 to 85	°C
Resistance at 25°C	5k to 100k	Ω
Resistance tolerance	±1, ±2, ±5	%
Beta <sub>25/85</sub>	3977 or 4252	K
Dissipation constant	1.5	mW/K
Time response	7	Sec.
Dielectric withstand between wires and eyelet	1,000	VDC

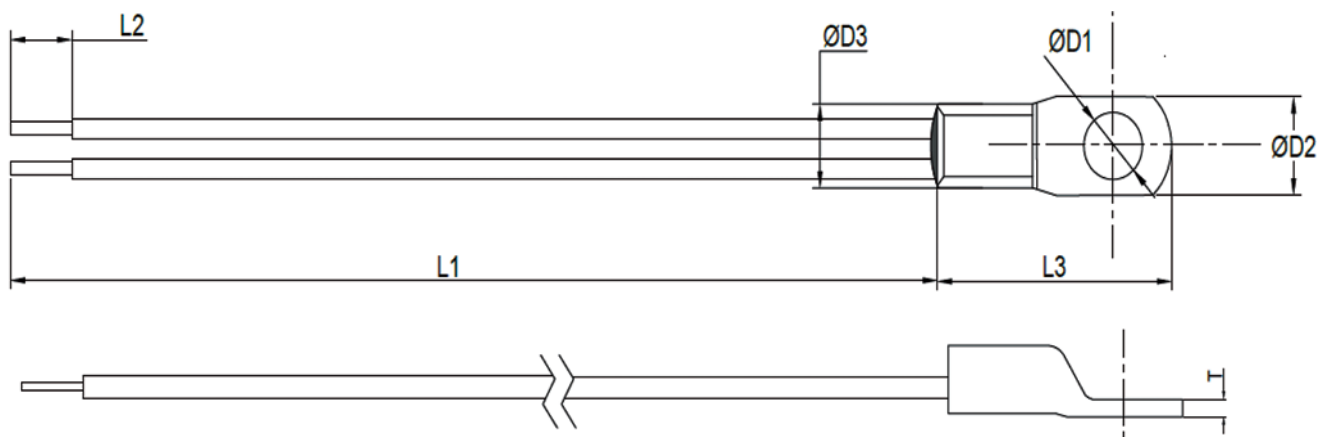
# Amphenol

## Advanced Sensors

# RTS Series Ring Terminal Temperature Sensors

## Dimensions

Mechanical Dimensions (mm)							
	D1	L1	L2	D3	T	L3	D2
M3	3.2	See dimensions drawing	6±2	4.5	1	16	7.5
M3.5	3.7		6±2	4.5	1	18	7.5
M4	4.2		6±2	5	1	20	10
M5	5.2		6±2	5	1	20	10
M6	6.4		6±2	5.6	1.2	25	10.8



**Coding:** Eyelet size and wire length are specified by product code – RTS203C1R5M3L501

RTS	203	C1	R5	M3	L500	Example	Description	Standard Values			
						L500	Wire Length	L 500	50±5 mm		
								L 151	150±5 mm		
								L 201	200±5 mm		
								L 501	500±5 mm		
								L 102	1000±50 mm		
								L 202	2000±50 mm		
						M3	Eyelet Size	M3, M35, M4, M5, M6			
			R5			R5	Tolerance	R1	1%		
								R2	2%		
								R5	5%		
		C1				C1	Beta Value	C1	3977K		
								C4	3435K		
								CG	4252K		
	203						R25	502	5000Ω		
								103	10000Ω		
								203	20000Ω		
								503	50000Ω		
								104	100000Ω		
RTS						RTS	Sensor Type				

# RTS Series Ring Terminal Temperature Sensors

SI No	Exti Part Number	Resistance at 25°C	Resistance Tolerance	B Value (25/85° C)	Dissipation Factor	Maximum Power at 25°C	Eyelet Type
1	RTS502RXMXLXXX	5000.0Ω	±1.0%, ±2.0% & ±5.0%	3977K	1.5 mW/K	75 mW	M3/M3.5/M4/ M5/M6
2	RTS103RXMXLXXX	10000.0 Ω	±1.0%, ±2.0% & ±5.0%	3977K			
3	RTS103RXMXLXXX	10000.0 Ω	±1.0%, ±2.0% & ±5.0%	3435K			
4	RTS203RXMXLXXX	20000.0 Ω	±1.0%, ±2.0% & ±5.0%	3977K			
5	RTS203RXMXLXXX	20000.0 Ω	±1.0%, ±2.0% & ±5.0%	4252K			
6	RTS503RXMXLXXX	50000.0 Ω	±1.0%, ±2.0% & ±5.0%	3977K			
7	RTS503RXMXLXXX	50000.0 Ω	±1.0%, ±2.0% & ±5.0%	4252K			
8	RTS104RXMXLXXX	100000.0 Ω	±1.0%, ±2.0% & ±5.0%	3977K			
9	RTS104RXMXLXXX	100000.0 Ω	±1.0%, ±2.0% & ±5.0%	4252K			

## Note:

- Alternate resistance value, B value, tolerance available on customer request.
- Alternate wire type and wire length available on customer request.
- Alternate eyelet sizes available on customer request.

