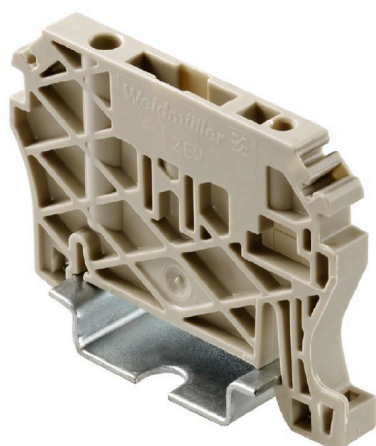


**ZEW 35****Weidmüller Interface GmbH & Co. KG**

Klingenbergstraße 26

D-32758 Detmold

Germany

[www.weidmueller.com](http://www.weidmueller.com)**Product image**

Weidmüller's range of products includes end brackets that guarantee a permanent, reliable mounting on the terminal rail and prevent sliding. Versions with and without screws are available. The end brackets include marking options, also for group markers, and also a test plug holder.

**General ordering data**

|            |   |
|------------|---|
| Version    | End bracket, dark beige, TS 35, V-2, Wemid, Width: 6 mm, 100 °C |
| Order No.  | <a href="#">9540000000</a>                                      |
| Type       | ZEW 35  |
| GTIN (EAN) | 4008190956264   |
| Qty.       | 20 ST   |

## ZEW 35

Weidmüller Interface GmbH &amp; Co. KG

Klingenbergstraße 26

D-32758 Detmold

Germany

www.weidmueller.com

## Technical data

## Approvals

|      |         |
|------|---------|
| ROHS | Conform |
|------|---------|

## Dimensions and weights

|            |        |                 |             |
|------------|--------|-----------------|-------------|
| Depth      | 40 mm  | Depth (inches)  | 1.5748 inch |
| Height     | 55 mm  | Height (inches) | 2.1654 inch |
| Width      | 6 mm   | Width (inches)  | 0.2362 inch |
| Net weight | 6.69 g |                 |             |

## Temperatures

|                                  |               |                                  |        |
|----------------------------------|---------------|----------------------------------|--------|
| Ambient temperature              | -5 °C...40 °C | Continuous operating temp., min. | -50 °C |
| Continuous operating temp., max. | 100 °C        |                                  |        |

## Environmental Product Compliance

|                          |                             |                  |  |
|--------------------------|-----------------------------|------------------|--|
| RoHS Compliance Status   | Compliant without exemption |                  |  |
| REACH SVHC               | No SVHC above 0.1 wt%       |                  |  |
| Product Carbon Footprint | Cradle to gate              | 0.151 kg CO2 eq. |  |

## Material data

|                           |       |        |            |
|---------------------------|-------|--------|------------|
| Material                  | Wemid | Colour | dark beige |
| UL 94 flammability rating | V-2   |        |            |

## System specifications

|         |                   |      |       |
|---------|-------------------|------|-------|
| Version | For the terminals | Rail | TS 35 |
|---------|-------------------|------|-------|

## Additional technical data

|                     |                 |                  |         |
|---------------------|-----------------|------------------|---------|
| Installation advice | Direct mounting | Type of mounting | Snap-on |
| Interlock           | screwless       |                  |         |

## Dimensions

|              |       |
|--------------|-------|
| TS 35 offset | 41 mm |
|--------------|-------|

## General

|                     |                 |      |       |
|---------------------|-----------------|------|-------|
| Installation advice | Direct mounting | Rail | TS 35 |
|---------------------|-----------------|------|-------|

## Classifications

|             |             |             |             |
|-------------|-------------|-------------|-------------|
| ETIM 6.0    | EC001041    | ETIM 7.0    | EC001041    |
| ETIM 8.0    | EC001041    | ETIM 9.0    | EC001041    |
| ETIM 10.0   | EC001041    | ECLASS 9.0  | 27-14-11-35 |
| ECLASS 9.1  | 27-14-11-35 | ECLASS 10.0 | 27-14-11-35 |
| ECLASS 11.0 | 27-14-11-35 | ECLASS 12.0 | 27-14-11-35 |
| ECLASS 13.0 | 27-25-03-02 | ECLASS 14.0 | 27-25-03-02 |
| ECLASS 15.0 | 27-25-03-02 |             |             |