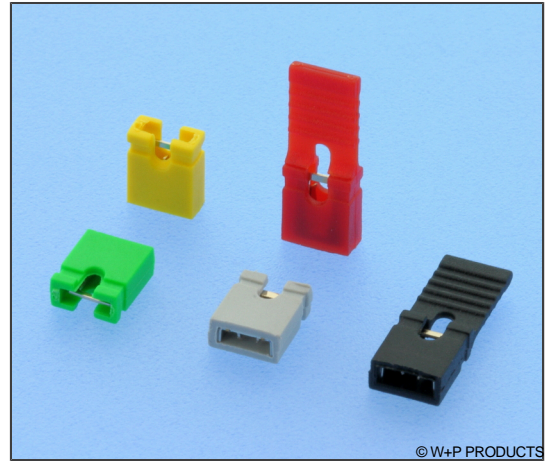


Kurzschlussbrücken RM 2,54mm, für 0,635mm Vierkantstifte Mini Jumpers, 2.54mm Pitch, for 0.635mm Square Pins

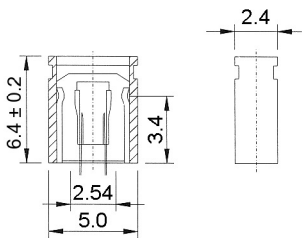
Technische Daten / Technical Data

Isolierkörper <i>Insulator</i>	Thermoplast, nach UL94 V-0 <i>Thermoplastic, rated UL94 V-0</i>
Kontaktmaterial <i>Contact Material</i>	Kupferlegierung <i>Copper Alloy</i>
Kontaktoberfläche <i>Contact Surface</i>	Gold über Nickel <i>Gold over nickel</i>
RoHS-Ausnahmen 6a-I / 6c <i>RoHS Exemptions 6a-I / 6c</i>	keine <i>none</i>
Durchgangswiderstand <i>Contact Resistance</i>	< 30 mΩ <i>< 30 mΩ</i>
Isolationswiderstand <i>Insulation Resistance</i>	> 1000 MΩ <i>> 1000 MΩ</i>
Spannungsfestigkeit <i>Test Voltage</i>	500 V AC <i>500 V AC</i>
Nennstrom <i>Current Rating</i>	3 A <i>3 A</i>
Temperaturbereich <i>Temperature Range</i>	-55 °C ... +85 °C <i>-55 °C ... +85 °C</i>

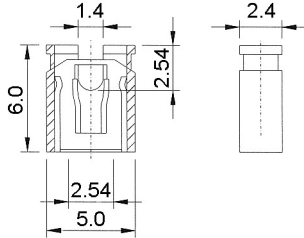


© W+P PRODUCTS

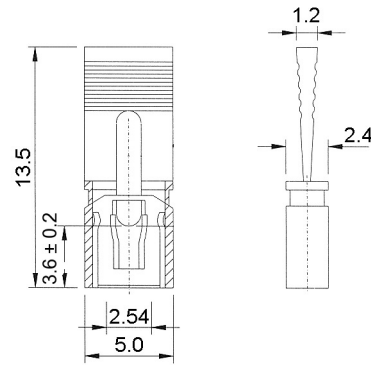
Einsetzbar für Vierkantstifte 0,635mm.
Accept rectangular pins 0.635mm.



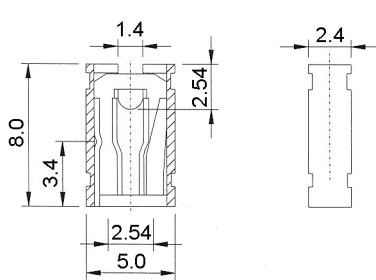
Type 101



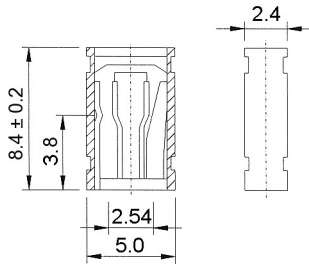
Type 201



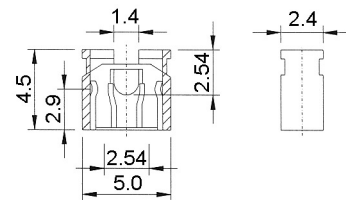
Type 301



Type 401



Type 501



Type 601

Series

165

Type*

101

101 Geschlossen
Closed
201 Offen
Open
301 Offen mit Lasche
Open with latch
401 Offen
Open
501 Geschlossen
Closed
601 Offen
Open

Colour*

10

10 Schwarz
Black
20 Rot
Red
30 Blau
Blue
40 Grün
Green
50 Gelb
Yellow
60 Grau
Grey

Plating

00

00 Kontaktbereich vergoldet
Gold plated contact area

Farboptionen für Serien 101 und 201.
Colour options for series 101, 201 only.

* Dies ist ein **Bestellbeispiel** -
bitte durch Ihre Spezifikationen ersetzen.
* This is an **order example** -
please replace by your specifications.