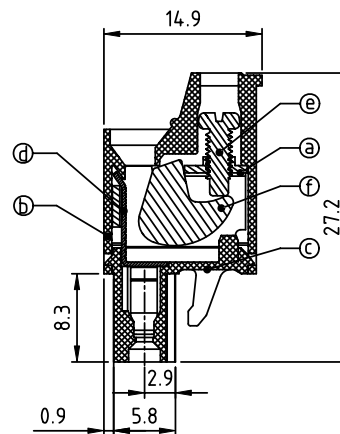
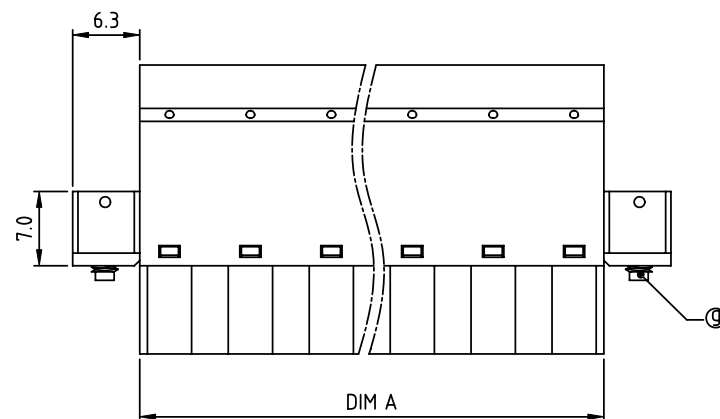
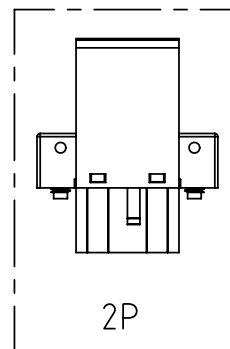
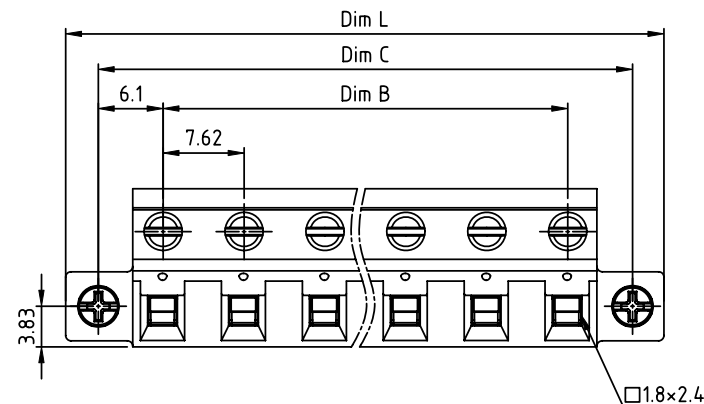


PRODUCT NUMBER	PITCH
VMxx05x300J0G	7.62 mm



## DIMENSION

Dim L	$(N-1) \times 7.62 + 18.24$
Dim A	$(N-1) \times 7.62 + 5.62$
Dim B	$(N-1) \times 7.62$
Dim C	$(N-1) \times 7.62 + 12.2$

N=Number of poles

Poles	Tolerance
2p-4p	$\pm 0.15$
5p-8p	$\pm 0.20$
9p-12p	$\pm 0.30$
13p-16p	$\pm 0.40$

PART NO.: VM xx 05 x 3 00J0 G

Solid block	No. of poles	Color	RoHS compliant (lead<4%) In copper Alloy
02	2 poles	0 Black (RAL9005)	
03	3 poles	2 Red (RAL3001/D)	
...	...	3 Orange(RAL2011/P)	
16	16 poles	4 Yellow(RAL1018/A)	
		5 Green(RAL6018/T)	
		6 Blue (RAL5015/A)	
		8 Grey(RAL7035/D)	
		9 White(RAL1102)	
		C Green(RAL6018/U)	

## Material:

- Item① Clamp: Steel Zinc plated
- Item② Terminal(top body): Thermoplastic (UL94V-0)
- Item③ Terminal(bottom body): Thermoplastic (UL94V-0)
- Item④ Female contact: High conductivity copper, Tin plated.
- Item⑤ Terminal screw: Steel Zinc plating "-" slot type
- Item⑥ Clampcase: Steel/steel Zinc plated
- Item⑦ With flange screw: Steel Zinc plated, M2.5

## Electrical:

- Voltage rating: 300V
- Current rating: 20A
- Wire range: 12-22
- Solid wire(AWG): 12-22
- Stranded wire(AWG): 3.5 Lb-In
- Torque: M2.5
- Wire strip length: 8-9mm
- Withstanding Voltage: 1.6KV
- Operating temperature: -40°C to +115°C
- Safety Approval: cULus