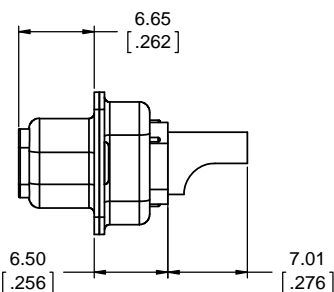
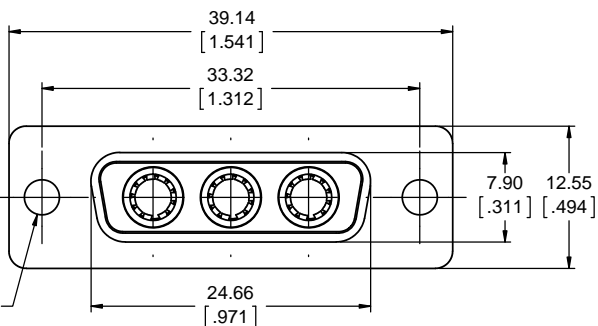


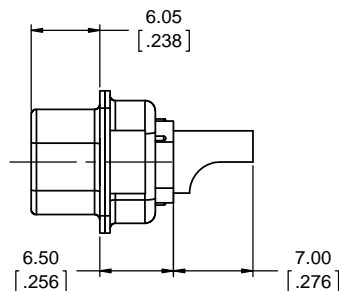
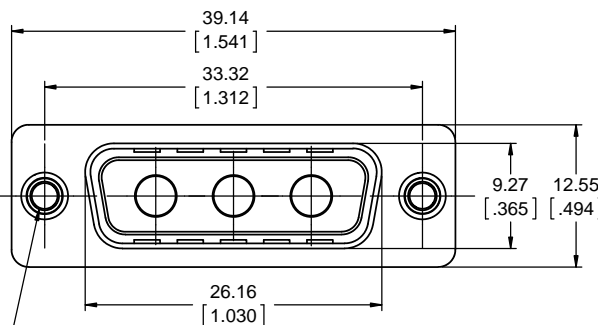
SOCKET

Ø3.10
[.122]
MOUNTING
CODE 2

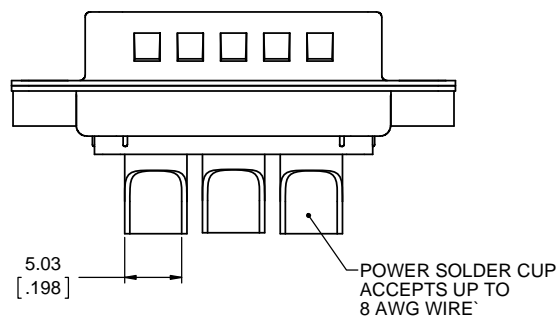


PIN

#4-40 THREAD
MOUNTING
CODE 4



SEE SHEET 2
FOR ADDITIONAL
MOUNTING OPTIONS



ORDERING CODE:

LCC17 - A3W3 P M - 2 N 0

SERIES

LCC17 = HIGH CURRENT D-SUB

ARRANGEMENT

A = SHELL SIZE
3W3 = 3 POSITION, 3 POWER

CONNECTOR STYLE

P = PIN
S = SOCKET

TERMINATION

M = SOLDER CUP FOR 8 AWG

MOUNTING

2 = 3.10mm [.122] DIA THROUGH HOLE
4 = #4-40 UNC THREAD

FILTER CAPACITANCE

N = NO FILTERS

MODIFIER

0 = STANDARD

NOTES:

1) MATERIALS: ALL MATERIALS ARE RoHS COMPLIANT PER EU DIRECTIVE 2002/95/EC AND AMENDMENTS.

- SHELLS: STAMPED STEEL, TIN OVER NICKEL PLATED
- INSULATOR: ENGINEERING THERMOPLASTIC, GLASS REINFORCED, HIGH TEMPERATURE RESISTANT, UL FLAMMABILITY RATING 94V-0, BLACK
- PIN CONTACTS: COPPER ALLOY PLATED WITH 0.76 MICRON 30µ" GOLD OVER 1.27 MICRON 50µ" NICKEL
- SOCKET CONTACTS: BERYLLIUM COPPER MATING GRID, COPPER ALLOY BALANCE PLATED WITH 0.76 MICRON 30µ" GOLD OVER 1.27 MICRON 50µ" NICKEL ON THE MATING AREA
- MOUNTING HARDWARE: STEEL OR COPPER ALLOY, TIN OR NICKEL PLATED

2) ELECTRICAL CHARACTERISTICS

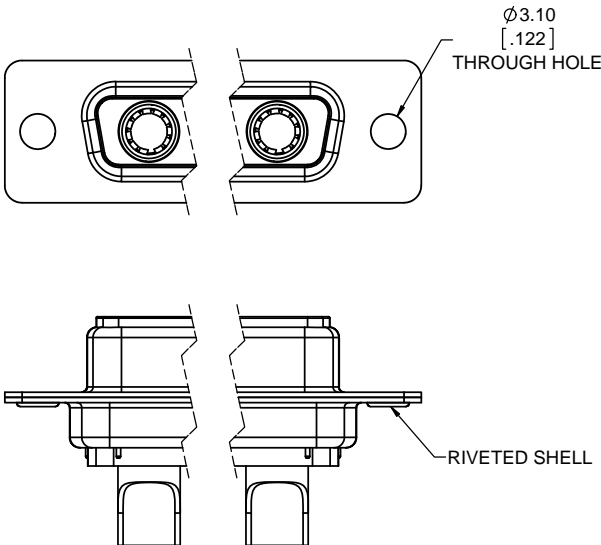
- CURRENT RATING: 55 A PER CONTACT
- CONTACT RESISTANCE: 0.25 MILLIOHMS MAX
- DIELECTRIC WITHSTANDING VOLTAGE: 1500V DC
- OPERATING TEMPERATURE: -40 °C TO +105 °C

UNLESS SPECIFIED OTHERWISE	DRAWN	S.CAELERS	NOV16/11
PRIMARY UNITS MILLIMETERS	CHECKED		
SECONDARY INCHES	M.E. APP'D		
REFERENCE IN PARENTHESES	Q.A. APP'D		
GENERAL TOLERANCES	DWG APPR.	A.GREEN	NOV18/11
1 DECIMAL PLACE	ENG. REL. NO.		
2 DECIMAL PLACES	REF.		
3 DECIMAL PLACES	THIRD ANGLE PROJECTION		
ANGULAR DEGREES	DO NOT SCALE DRAWING		

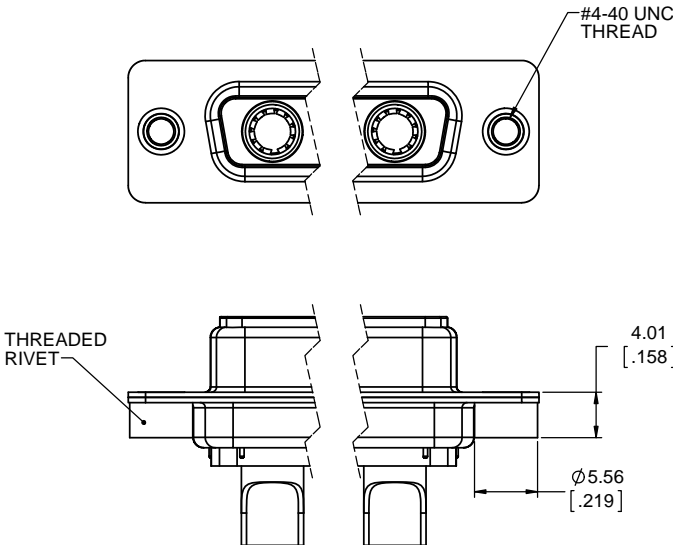
Amphenol Canada Corp. www.amphenolcanada.com			
LCC17 COOLPOWER D-SUB CONNECTOR, 3W3 ARRANGEMENT, SOLDER CUP TERMINATION (8 AWG), RoHS COMPLIANT			
DWG. NO. P-LCC17-A3W3XM-XN0			REV A
CODE ID NO. 03554	DWG SIZE: X	SCALE: 3:1	SHEET 1 OF 2

REVISIONS			
REV	DESCRIPTION, ECN, EAR NO.	DATE	APP'D
A	PROPOSAL DRAWING	NOV18/11	A.G

MOUNTING CODE 2



MOUNTING CODE 4



MOUNTING OPTIONS AVAILABLE FOR
PIN OR SOCKET CONNECTOR



UNLESS SPECIFIED OTHERWISE	DRAWN	S.CAELERS	NOV16/11
PRIMARY UNITS MILLIMETERS	CHECKED		
SECONDARY INCHES	M.E. APP'D		
REFERENCE IN PARENTHESES	Q.A. APP'D		
GENERAL TOLERANCES	DWG APPR.	A.GREEN	NOV18/11
1 DECIMAL PLACE	ENG. REL. NO.		
2 DECIMAL PLACES	REF.		
3 DECIMAL PLACES	THIRD ANGLE PROJECTION		
ANGULAR DEGREES	DO NOT SCALE DRAWING		

Amphenol Canada Corp.			
www.amphenolcanada.com			
LCC17 COOLPOWER D-SUB CONNECTOR, 3W3 ARRANGEMENT, SOLDER CUP TERMINATION (8 AWG), RoHS COMPLIANT			
DWG. NO.	REV A		
CODE ID NO.	03554	DWG SIZE: X	SCALE: 3:1 SHEET 2 OF 2