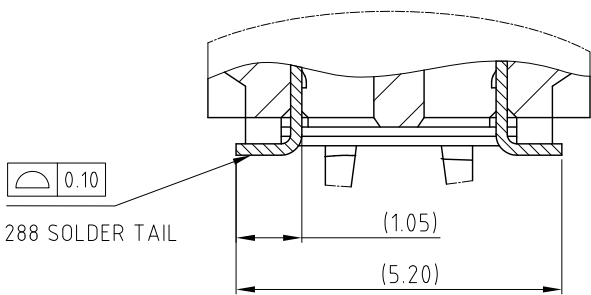
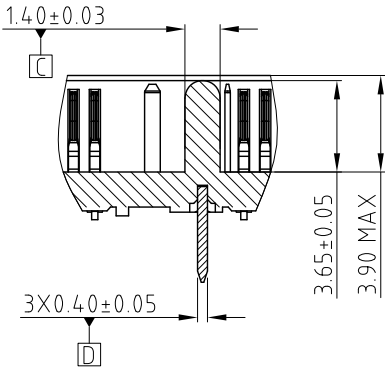
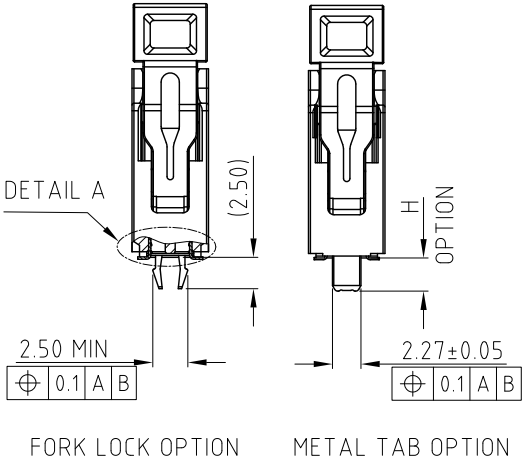
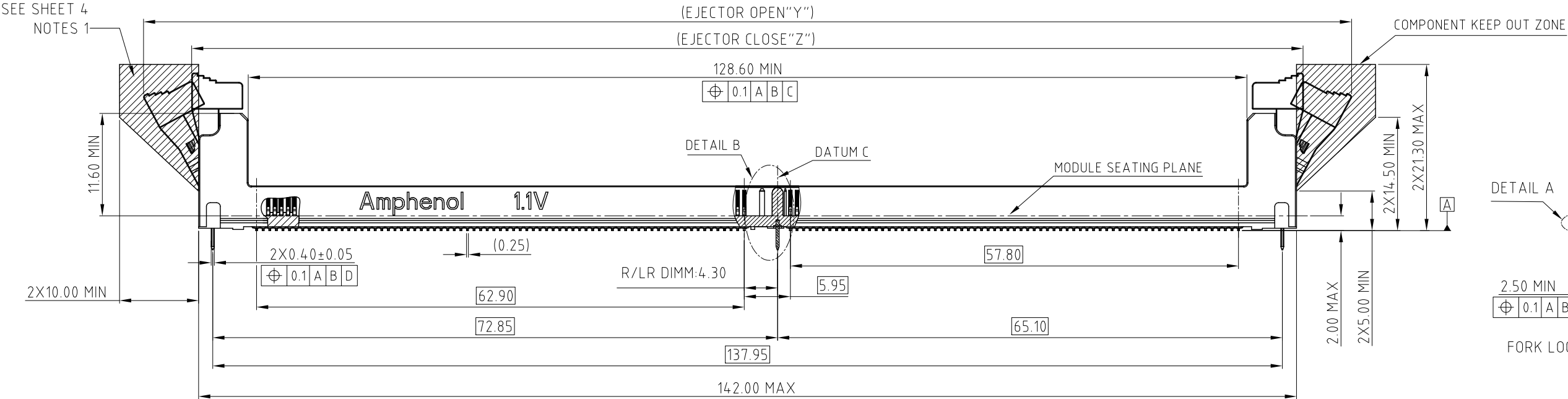
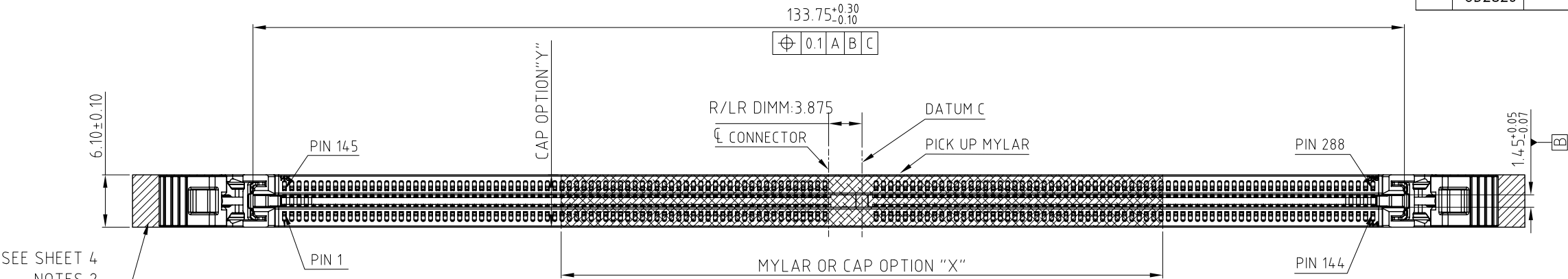


CUSTOMER DRAWING

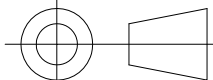
REVISIONS				
SYM	ECN	DESCRIPTION	DATE	APPROVED
6	CD2677	CHANGE THE TRAY DIMENSION 138.0 TO 137.0	Jun.04,2021	YH
7	CD2829	UPDATE THE PACKING TRAY	Aug.30,2021	YH



ITEM	EJECTOR OPEN DIMENSION "Y"	EJECTOR CLOSE DIMENSION "Z"	EJECTOR FIGURE
STANDARD LATCH	155.82	143.40	

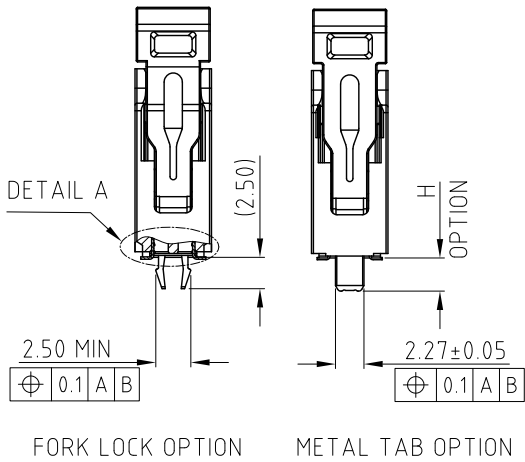
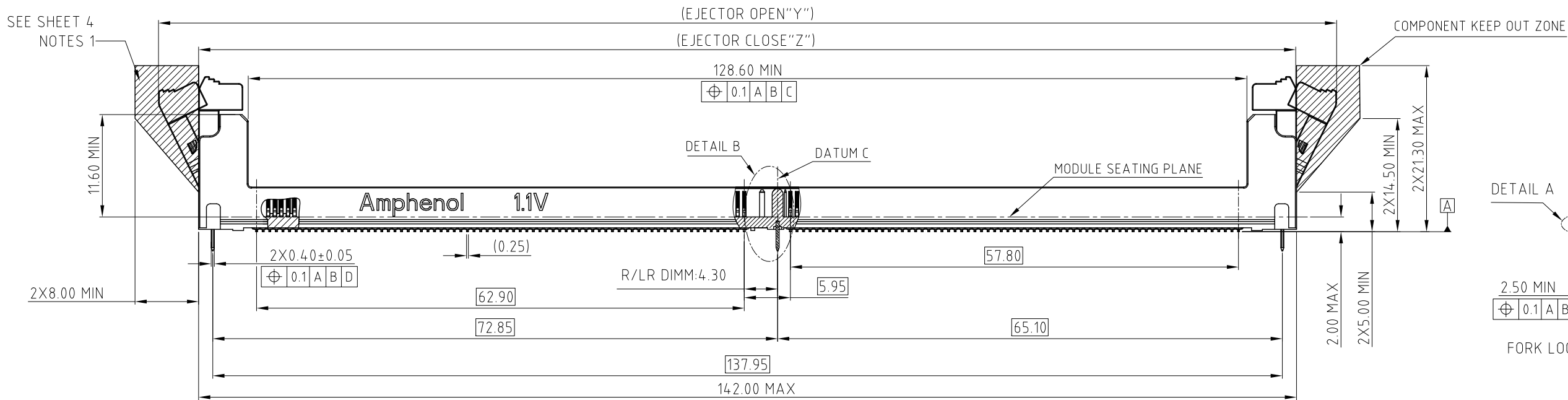
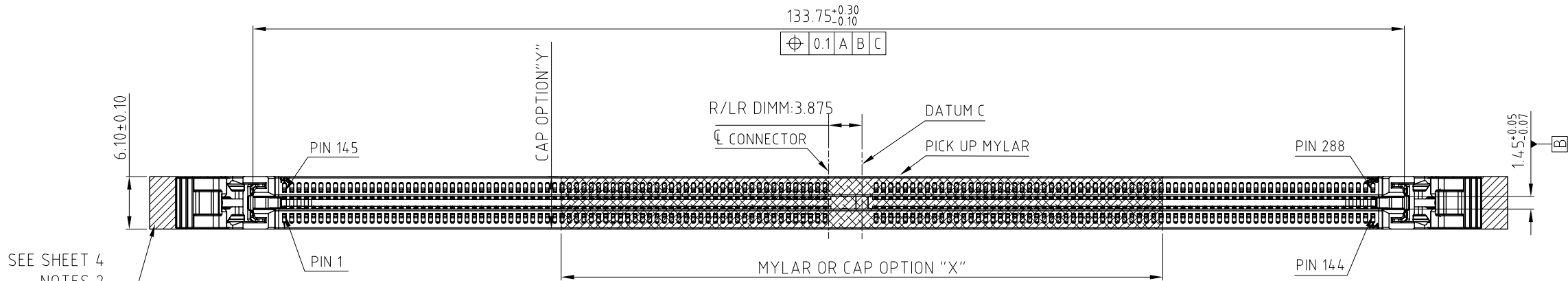
DETAIL B
SCALE 2:1

DETAIL A
SCALE 5:1

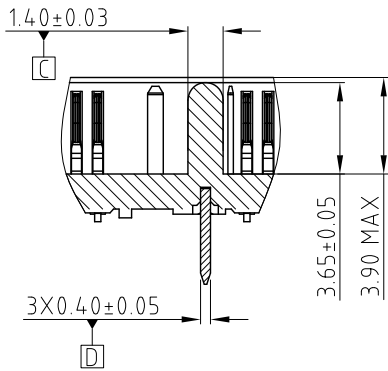
UNLESS OTHERWISE SPECIFIED TOLERANCES		APPROVAL		DATE	Amphenol		
U.S.		METRIC	DRAWN	Kellen.Yang			
.X		+/-	0.35	CHECKED			TITLE DDR5 288P R/LR DIMM CONNECTOR
.XX		+/-	0.25	CHECKED			
.XXX		+/-	0.15				
FRACTIONS		+/-					
ANGLES		+/-	3°				
FOR MATERIALS AND FINISHES SEE NOTES				DRAWING FILE : DRAWING\DDR\DDR504XXXXXXQ			
REMOVE SHARP EDGES				ANGLE OF PROJECTION			
DIMENSIONS							
U.S.		INCHES					
(METRIC)		(MM)					
SCALE		NONE					
				SHEET 1		OF 6	

CUSTOMER DRAWING

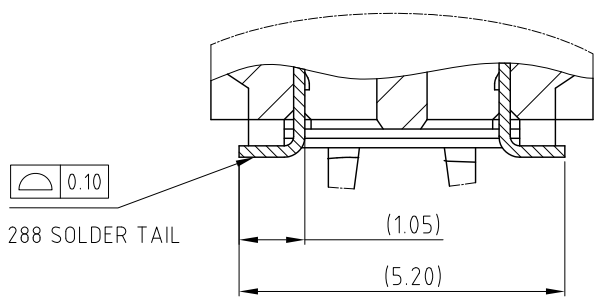
REVISIONS				
SYM	ECN	DESCRIPTION	DATE	APPROVED
		SEE SHEET1		



ITEM	EJECTOR OPEN DIMENSION "Y"	EJECTOR CLOSE DIMENSION "Z"	EJECTOR FIGURE
SHORT LATCH	151.95	141.60	



DETAIL B
SCALE 2:1



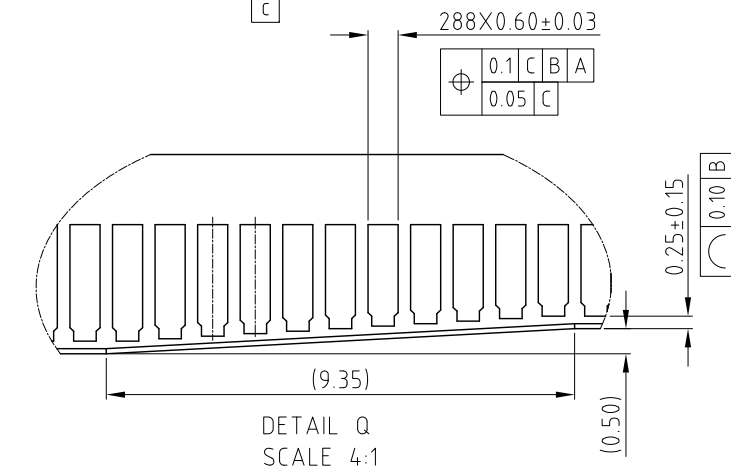
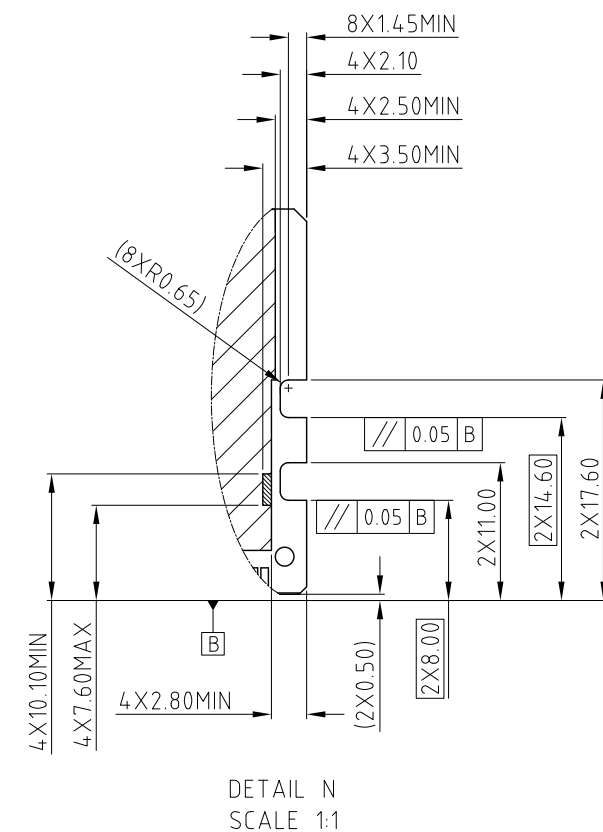
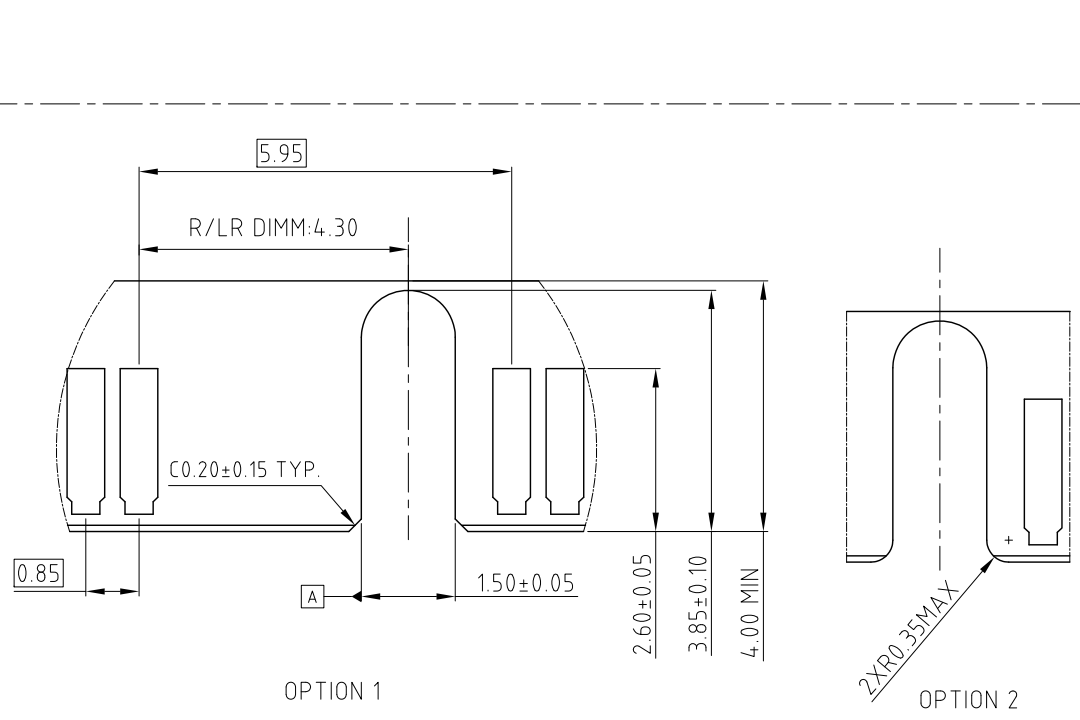
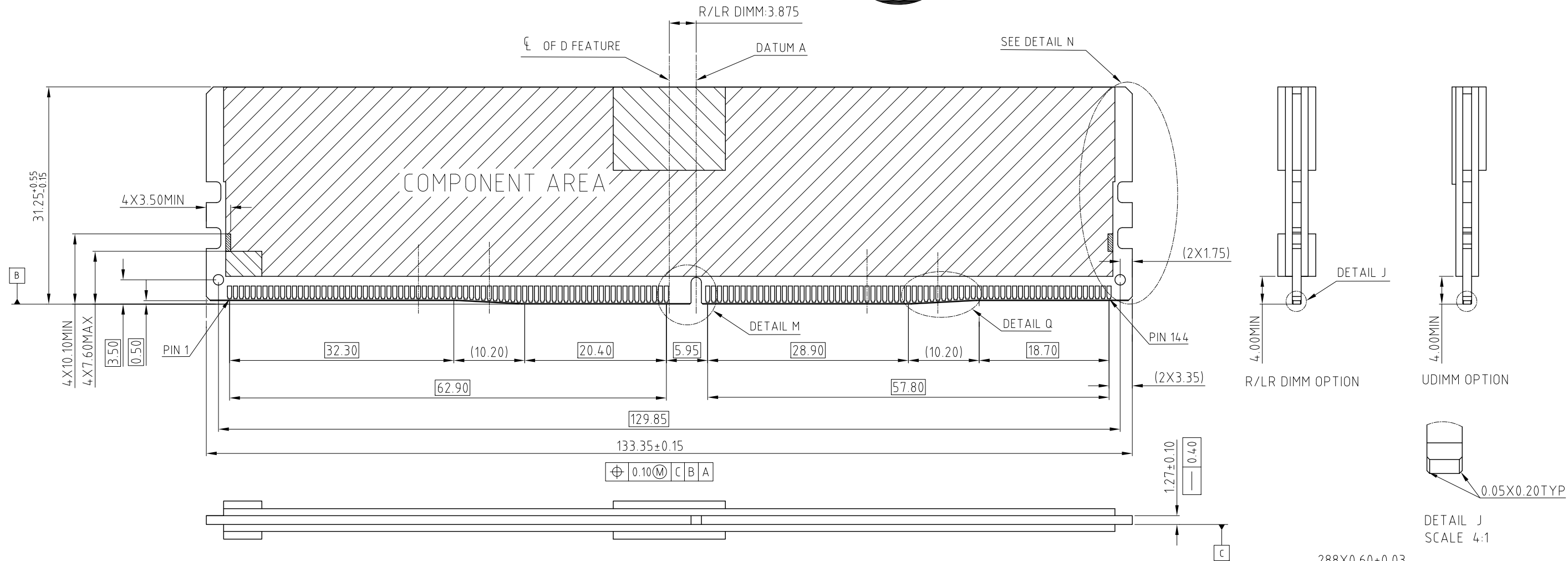
DETAIL A
SCALE 5:1

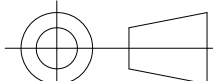
UNLESS OTHERWISE SPECIFIED TOLERANCES		APPROVAL		DATE	Amphenol					
U.S.	METRIC	DRAWN	Kellen.Yang	Aug.30,2021						
.X	+/-		CHECKED		TITLE					
.XX	+/-		CHECKED							
.XXX	+/-		DRAWING FILE : DRAWING\DDR\DDR504XXXXXXQ			DDR5 288P R/LR DIMM CONNECTOR				
FRACTIONS	+/-									
ANGLES	+/-	3°	ANGLE OF PROJECTION			SIZE	DRAWING NO.		REV.	
FOR MATERIALS AND FINISHES SEE NOTES						A3	C DDR5-04-X-X-X-XXX-X-Q			7
REMOVE SHARP EDGES						SCALE	NONE		SHEET 2 OF 6	
DIMENSIONS										
U.S.	INCHES									
(METRIC)	(MM)									



REVISIONS				
SYM	ECN	DESCRIPTION	DATE	APPROVED
		SEE SHEET1		

DDR5 MODULE
MORE INFORMATION REFER TO JEDEC MO-329

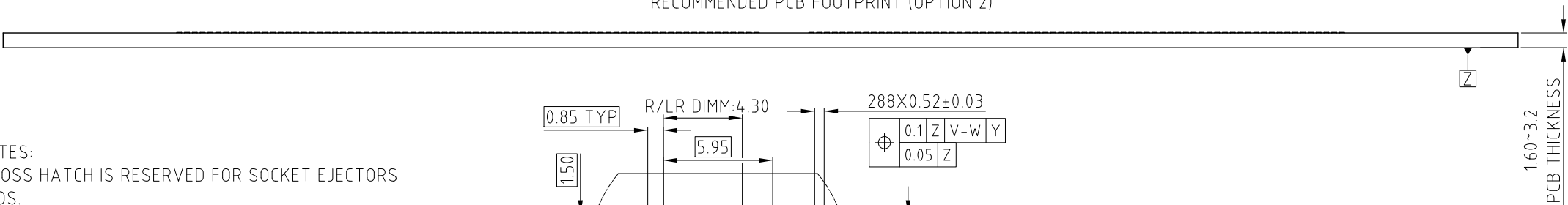
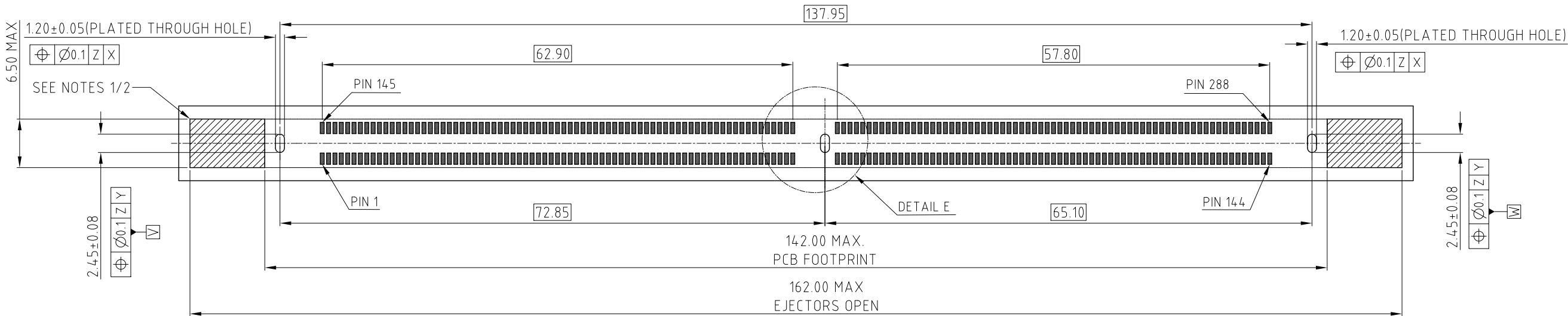
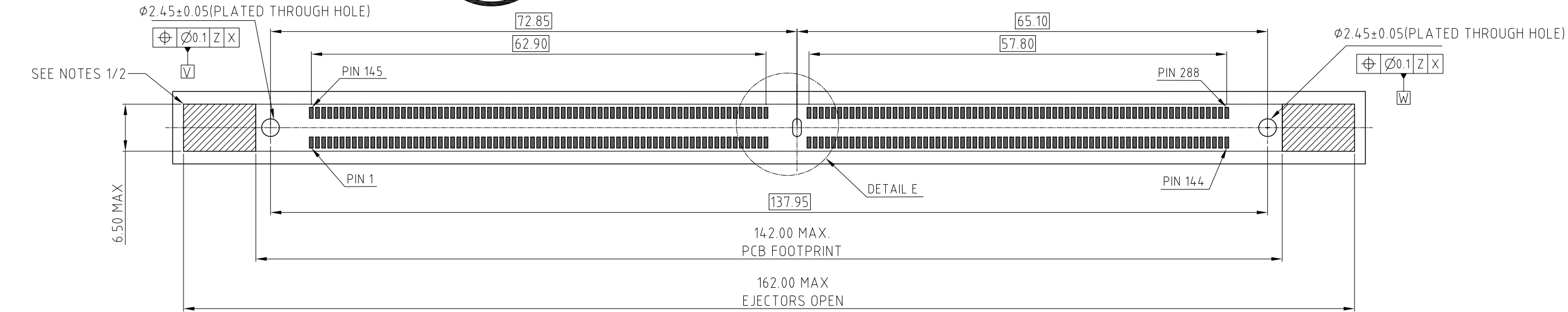


UNLESS OTHERWISE SPECIFIED TOLERANCES U.S. METRIC X +/- 0.35 .XX +/- 0.25 .XXX +/- 0.15 FRACTIONS +/- ANGLES +/- 3°		APPROVAL DRAWN Kellen.Yang CHECKED CHECKED		DATE Aug.30,2021		Amphenol		
FOR MATERIALS AND FINISHES SEE NOTES		DRAWING FILE : DRAWING\DDR\DDR504XXXXXXXQ		TITLE DDR5 288P R/LR DIMM CONNECTOR				
REMOVE SHARP EDGES		ANGLE OF PROJECTION 		SIZE A3		DRAWING NO. C DDR5-04-X-X-X-XXX-X-Q		REV. 7
DIMENSIONS U.S. INCHES (METRIC) (MM)				SCALE NONE		SHEET 3 OF 6		



CUSTOMER DRAWING

REVISIONS				
SYM	ECN	DESCRIPTION	DATE	APPROVED
		SEE SHEET1		

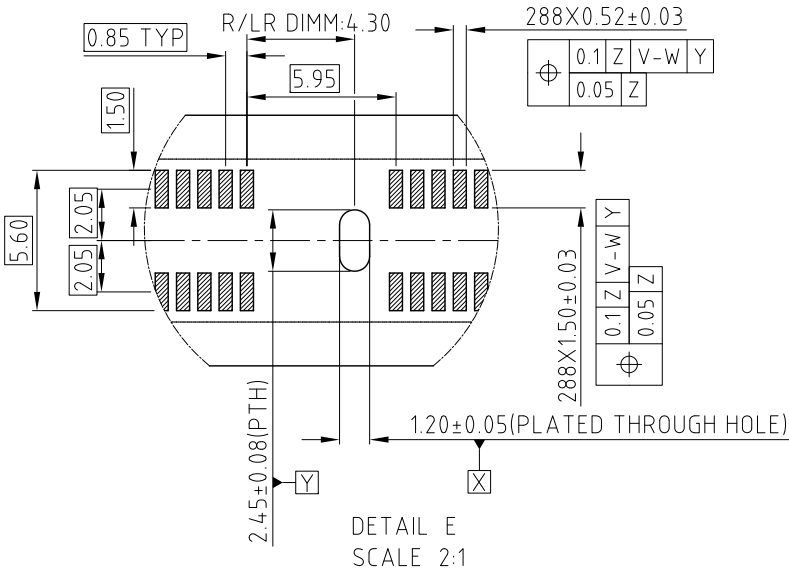


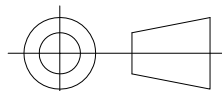
ADDITIONAL NOTES:

- KEEP OUT CROSS HATCH IS RESERVED FOR SOCKET EJECTORS AT BOTH ENDS.
- KEEP OUT ZONE IS HEIGHT LIMITED PER NOTE 1.
- RECOMMENDED STENCIL THICKNESS:

REFLOW CONDITION	THICKNESS OF STENCIL
AIR	0.18MM MIN
NITROGEN	0.18MM MIN
REWORK	0.20MM MIN

RECOMMENDED PCB LAYOUT
MORE INFORMATION REFER TO JEDEC SO-023



UNLESS OTHERWISE SPECIFIED TOLERANCES		APPROVAL		DATE	Amphenol					
U.S.	METRIC	DRAWN	Kellen.Yang	Aug.30,2021						
.X +/-	0.35	CHECKED			TITLE					
.XX +/-	0.25	CHECKED								
.XXX +/-	0.15				DDR5 288P R/LR DIMM CONNECTOR					
FRACTIONS +/-										
ANGLES +/-	3°	DRAWING FILE :			DDR5 288P R/LR DIMM CONNECTOR					
FOR MATERIALS AND FINISHES SEE NOTES			DRAWING\DDR\DDR504XXXXXXQ							
REMOVE SHARP EDGES		ANGLE OF PROJECTION			SIZE		DRAWING NO.		REV.	
DIMENSIONS										
— U.S. —	— INCHES —				A3	C DDR5-04-X-X-X-XXX-X-Q				
(METRIC)	(MM)									
					SCALE	NONE		SHEET 4 OF 6		

CUSTOMER DRAWING

