

PRODUCT NO.

73725

PRODUCT NUMBER CODE

73725-X X X X LF

HOUSING COLOR OPTION

- 0-WHITE
1-BLACK

SENSOR CONTACT OPTION

- 0-WITH SENSOR CONTACT
1-WITHOUT SENSOR CONTACT

SHIELD PLATING OPTION

- 1- 1.25 μ m MINIMUM NICKEL UNDERPLATE &
2.5 μ m MINIMUM BRIGHT TIN OVER ALL AREA.
(HOLD DOWN STYLE "A")
- 2- 1.25 μ m MINIMUM NICKEL UNDERPLATED OVER ALL;
2.5 μ m MINIMUM MATTE TIN PLATED ON
HOLD DOWN AREA ONLY.(HOLD DOWN STYLE "B")
- 3- 1.25 μ m MINIMUM NICKEL UNDERPLATED OVER ALL;
2.5 μ m MINIMUM MATTE TIN PLATED ON
HOLD DOWN AREA ONLY.(HOLD DOWN STYLE "A")
- 4- 1.25 μ m MINIMUM NICKEL UNDERPLATED &
2.5 μ m MINIMUM BRIGHT TIN OVER ALL AREA.
(HOLD DOWN STYLE "B")
- 5- 1.25 μ m MINIMUM NICKEL UNDERPLATED OVER ALL;
2.5 μ m MINIMUM MATTE TIN PLATED ON
HOLD DOWN AREA ONLY (HOLD DOWN STYLE "C")
- 6- 1.25 μ m MINIMUM NICKEL ONLY.
(HOLD DOWN STYLE "A")
- 7- 1.25 μ m MINIMUM NICKEL UNDERPLATED &
2.5 μ m MINIMUM MATTE TIN PLATED OVER ALL.
(HOLD DOWN STYLE "A")
- 8- 1.25 μ m MINIMUM NICKEL UNDERPLATED &
2.5 μ m MINIMUM MATTE TIN PLATED ALL AREA.
(HOLD DOWN STYLE "B")
- 9- 1.25 μ m MINIMUM NICKEL UNDERPLATED OVER ALL;
2.5 μ m MINIMUM MATTE TIN PLATED ON
HOLD DOWN AREA ONLY (HOLD DOWN STYLE "D")
- S- 1.25 μ m MINIMUM NICKEL ONLY.(HOLD DOWN STYLE "A").
HIGH PERFORMANCE MATERIAL
FOR 12,000 DURABILITY CYCLES
- A- 1.25 μ m MINIMUM NICKEL PLATED OVER ALL
2.5 μ m MINIMUM MATTE TIN PLATED ON HOLD DOWN AREA ONLY
(HOLD DOWN STYLE "F")
- B- 1.25 μ m MINIMUM NICKEL PLATED OVER ALL
2.5 μ m MINIMUM MATTE TIN PLATED ON HOLD DOWN AREA ONLY
(HOLD DOWN STYLE "F")

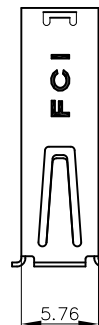
TERMINAL OPTION

50u" NI UNDERPLATE; 30u" GXT CONTACT AREA,100u" TIN TAIL AREA;

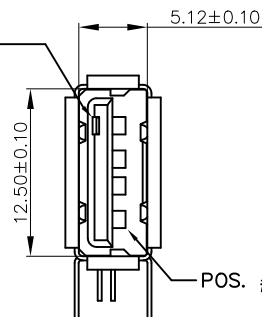
- 0- DIM "A": 2.29 (TERMINAL TAIL LENGTH);
1- DIM "A": 3.71 (TERMINAL TAIL LENGTH);

NOTES:

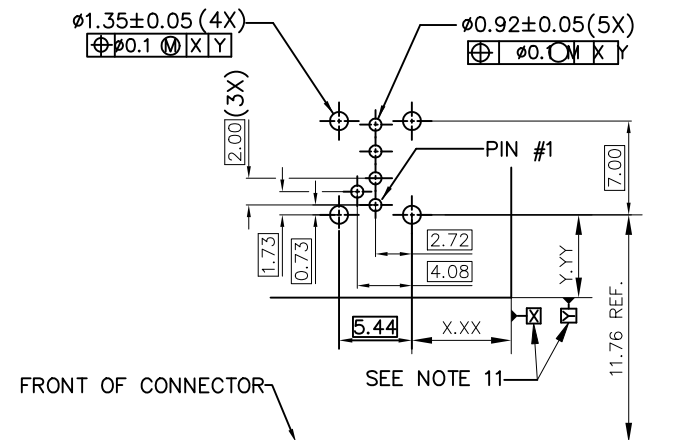
- MATERIAL:
CONTACTS: COPPER ALLOY
SHIELD: COPPER ALLOY
HOUSING: UL 94V-0 THERMOPLASTIC, COLOR: SEE PRODUCT CODE
- PLATING:
CONTACTS: GOLD FLASH OVER PALLADIUM NICKEL (0.76 μ m MINIMUM)
IN CONTACT AREA; 2.5 μ m TIN MINIMUM IN SOLDER TAIL AREA.
1.27 μ m MINIMUM NICKEL UNDERPLATE OVER ALL SURFACES.
SHIELD: SEE PRODUCT NUMBER CODE.
(THE PLATING MEASURE POINT ON THE SHIELD HOLD DOWN AREA ONLY).
- DATUMS & BASIC DIMENSIONS TO BE DETERMINED BY CUSTOMER
- RECOMMENDED PCB BOARD THICKNESS IS 1.00 ~ 1.60mm EXCEPT 73725-1191BLF;
73725-1191BLF CAN BE USED FOR THE PCB BOARD THICKNESS 2.30 ~ 2.65mm.
- MAXIMUM PANEL THICKNESS TO BE 2.67mm IF MOUNTED BEHIND PANEL
- METAL SHELL SLIVER 0.20 MAX.
- NI PLATING DOES NOT COMPLY WITH THE USB STANDARDS
(TO BE CONTINUED)

LEAD FREE OPTION
SEE NOTE 9PACKAGING OPTION
B - TUBE
R - TAPE&REEL

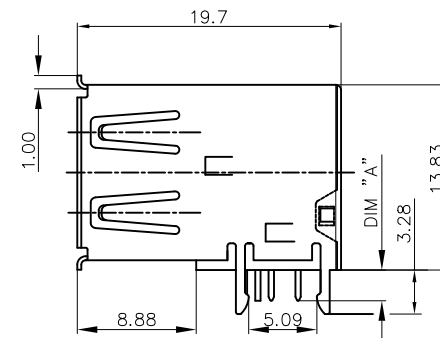
SENSOR CONTACT



WITH SENSOR CONTACT



PC BOARD MOUNTING DIMENSIONS FOR 5 PIN

FOR 73725-X0X0B
HOLD DOWN STYLE "A"

mat'l. code				surface ¹²³ /tolerance			projection	product family		
				ISO 1302	ISO 406	ISO 1101		HPL 511 USB 2.0		
ltr	ecn no	dr	date	tolerances unless otherwise specified			mm	title		
AJ	ELX-N-27708	LZ	2017/08/15	angles	linear	.0±.30		USB UP-RIGHT RECEPT		
AD	ELX-N-012006	A.ZH	06/25/2012	0°±2'		.00±.20				
AE	ELX-N-13463	A.ZH	11/14/2012	dr	PAMP	.000±.10	scale 1:1			
AF	ELX-N-14592	J.HAN	06/10/2013	eng	R Y LIU	5/20/97	Amphenol FCI	dwg no		
AG	ELX-N-21594	LQ	08/04/2015	chr	R Y LIU	5/20/97		73725		
AH	ELX-N-21919	LQ	08/04/2015	app	JENN TSAO	5/20/97		type Product Customer Drawing		
sheet	revision									
index	sheet									

PRODUCT NO.
73725

(CONTINUED)

8. P/N'S WITH SUFFIX "LF" ARE LEAD FREE P/N'S

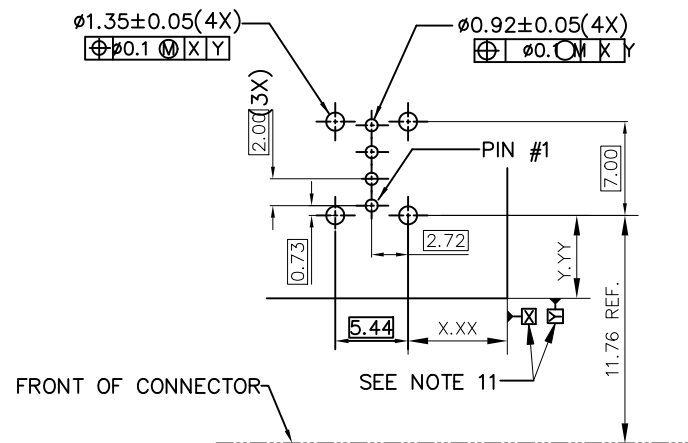
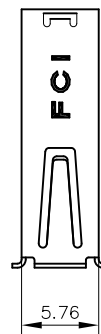
FOR LEAD FREE P/N, THE PRODUCT MEET EUROPEAN UNION DIRECTIVES AND OTHER COUNTRY REGULATION AS DESCRIBED IN GS-22-008

FOR THE PRODUCTS WITH THE METAL SHELL PLATING NICKEL AND MATTE SN CAN WITHSTAND EXPOSURE TO 260°C PEAK TEMPERATURE FOR 40 SECONDS IN A CONVECTION, INFRA-RED OR VAPOR PHASE REFLOW PROCESS; FOR THE PRODUCTS WITH METAL SHELL PLATING BRIGHT SN OR SEMI-BRIGHT SN CAN'T WITHSTAND REFLOW AND JUST CAN WITHSTAND EXPOSURE TO 260°C PEAK TEMPERATURE FOR 10 SECONDS IN WAVE SOLDERING PROCESS.

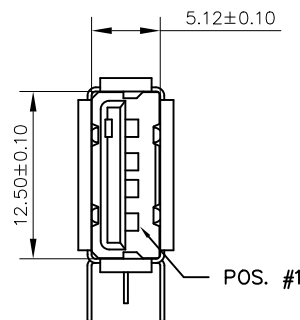
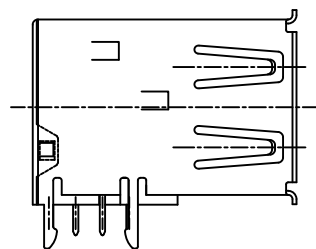
FOR ALL LEAD FREE P/N'S, WITH SUFFIX LF.

12. THE PRODUCT CAN BE USED FOR PIP PROCESS

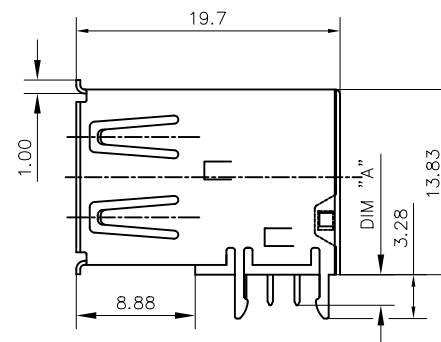
13. DATUM OF CUSTOMER'S PCB LAYOUT.



PC BOARD MOUNTING DIMENSIONS FOR 4 PIN



WITHOUT SENSOR CONTACT

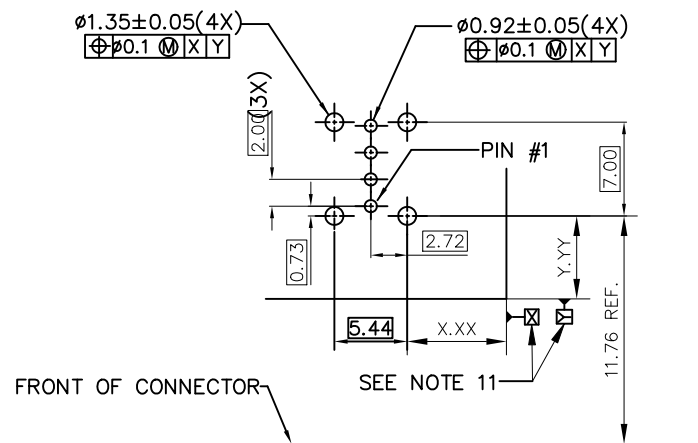


FOR 73725-X1X0B
HOLD DOWN STYLE "A"

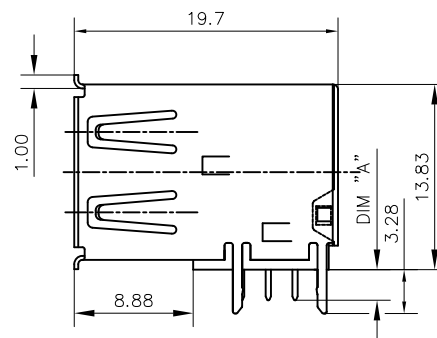
mat'l. code				surface ¹²³ /tolerance			projection		product family		
				ISO 1302 ✓			ISO 406 ISO 1101		HPL 511 USB 2.0		
ltr		ecn no		dr		date		tolerances unless otherwise specified		title	
AJ								mm		USB UP-RIGHT RECEPT	
								scale 1:1		dwg no 73725 type Product Customer Drawing	
				dr		PAMP		5/20/97		sheet2 of 4 size	
				engr		R Y LIU		5/20/97		A3	
				chr		R Y LIU		5/20/97			
				appd		JENN TSAO		5/20/97			
sheet index		revision sheet									

PRODUCT NO.

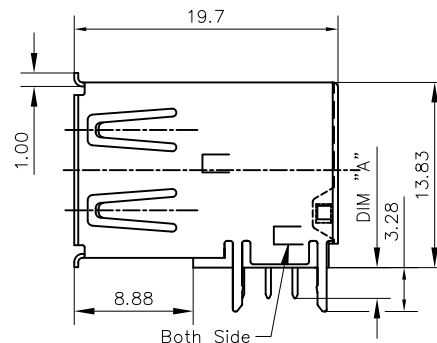
73725



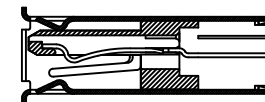
PC BOARD MOUNTING DIMENSIONS FOR 4 PIN



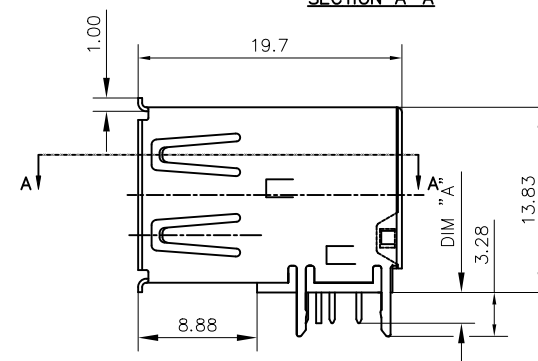
WITHOUT SENSOR CONTACT
FOR 73725-X1X0B
HOLD DOWN STYLE "B"



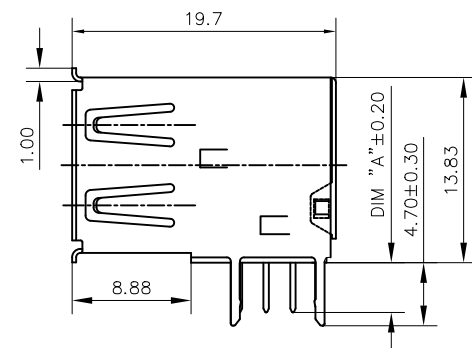
WITHOUT SENSOR CONTACT
FOR 73725-XXA0XLF
73725-XXB0XLF ONLY
HOLD DOWN STYLE "F"




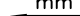

SECTION A-A



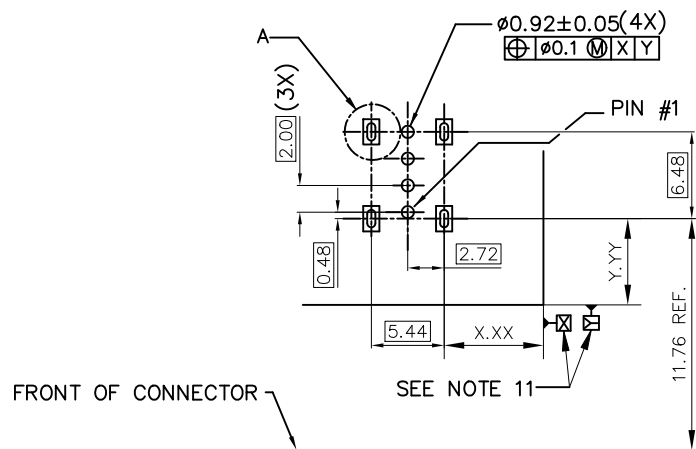
WITH SENSOR CONTACT
FOR 73725-X0X0B
HOLD DOWN STYLE "B"



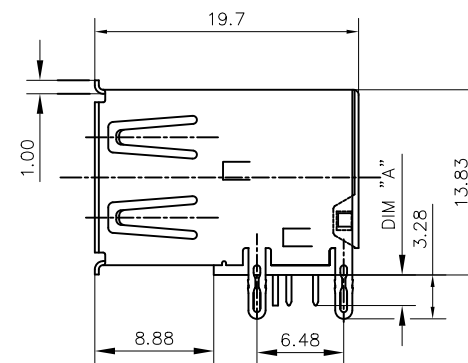
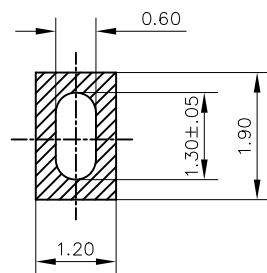
WITHOUT SENSOR CONTACT
FOR 73725-X191XLF
HOLD DOWN STYLE "D"

mat'l. code				surface ¹²³ / tolerance		projection		product family			
				ISO 1302 ✓ ISO 406 ISO 1101				HPL 511 USB 2.0			
ltr	ecn	no	dr	date		tolerances unless otherwise specified		title			
AJ						mm 		USB UP-RIGHT RECEPT			
						mm					
						scale 1:1					
								dwg no		sheet3 of 4	size
								73725		A3	
sheet index		revision sheet						type Product Customer Drawing			

PRODUCT NO.
73725



PC BOARD MOUNTING DIMENSIONS FOR 4 PIN



WITHOUT SENSOR CONTACT
FOR 73725-X150B
HOLD DOWN STYLE "C"

mat'l. code				surface ¹²³	tolerance	projection	product family		
				ISO 1302	ISO 406	ISO 1101	HPL 511 USB 2.0		
ltr	ecn no	dr	date	tolerances unless otherwise specified			title		
AJ				angles	.0±.30	mm	USB UP-RIGHT RECEPT		
				linear	.00±.20				
				0°±2°	.000±.10	scale 1:1			
				dr	PAMP	5/20/97	dwg no		
				engr	R Y LIU	5/20/97	sheet 4 of 4		
				chr	R Y LIU	5/20/97	73725		
				appd	JENN TSAO	5/20/97	type Product Customer Drawing		
sheet	revision								
index	sheet								