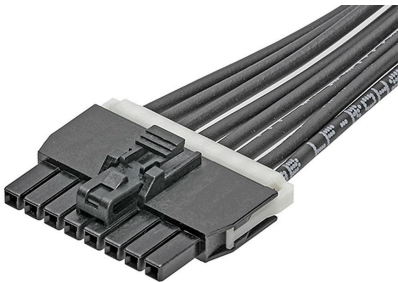




Part Number : [1451300810](#)
Product Description : Nano-Fit-to-Nano-Fit Off-the-Shelf (OTS) Cable Assembly, Single Row, Matte Tin (Sn) Plating, 1.0m Length, 8 Circuits, Black
Series Number : 145130
Status : Active
Product Category : Power and Signal Cable Assemblies



Documents & Resources

- Drawings**
[Drawing 1451300810_sd.pdf](#)
- 3D Models and Design Files**
[3D Model 1451300810_stp.zip](#)

Product Environment Compliance

Compliance

GADSL/IMDS	Not Relevant
China RoHS	
EU ELV	Not Relevant
Low-Halogen Status	Not Low-Halogen per IEC 61249-2-21
REACH SVHC	Not Contained per D(2024)4144-DC (27 June 2024)
EU RoHS	Compliant per EU 2015/863

Multiple Part Product Compliance Statements

- Eu RoHS
- REACH SVHC
- Low-Halogen

Multiple Part Industry Compliance Documents

- IPC 1752A Class C
- IPC 1752A Class D
- Molex Product Compliance Declaration
- IEC-62474

Part Details

General

Status	Active
Category	Power and Signal Cable Assemblies
Series	145130
Description	Nano-Fit-to-Nano-Fit Off-the-Shelf (OTS) Cable Assembly, Single Row, Matte Tin (Sn) Plating, 1.0m Length, 8 Circuits, Black
Application	Power, Wire-to-Board
Assembly Configuration	Dual Ended Connectors
Connector to Connector	Nano-Fit-to-Nano-Fit
Product Family	Nano-Fit Power Connectors
Product Name	Nano-Fit
Type	Discrete Wire Assembly
UPC	191130119042

Electrical

Current - Maximum per Contact	8.0A
Voltage - Maximum	250V AC (RMS)

Physical

Cable Length	1.0m
Circuits (Loaded)	8
Circuits (maximum)	8
Color - Resin	Black
Gender	Female-Female
Lock to Mating Part	Yes
Material - Metal	High Conductivity Copper
Material - Plating Mating	Matte Tin
Material - Plating Termination	Matte Tin
Material - Resin	Nylon
Net Weight	58.127/g

Number of Rows	1
Overmolded	No
Packaging Type	Bag
Pitch - Mating Interface	2.50mm
Plating min - Mating	2.540µm
Plating min - Termination	2.540µm
Single Ended	No
Termination Interface Style	Crimp or Compression
Wire/Cable Type	UL 1061
Wire Insulation Diameter	1.57mm
Wire Size (AWG)	20

Mates With / Use With

Mates with Part(s)

Description	Part Number
Nano-Fit Vertical Header, Through Hole, 2.50mm Pitch, Single Row, 8 Circuits, with Kinked Pins, Tin (Sn) Plating, Black, Glow-Wire Capable, Tray	<u>1053091108</u>
Nano-Fit Vertical Header, Through Hole, 2.50mm Pitch, Single Row, 8 Circuits, with Solder Clips, Tin (Sn) Plating, Black, Glow-Wire Capable, Tray	<u>1053111108</u>
Nano-Fit Right-Angle Header, Through Hole, 2.50mm Pitch, Single Row, 8 Circuits, Tin (Sn) Plating, Black, Glow-Wire Capable, Tray	<u>1053131108</u>
Nano-Fit Vertical Header, Surface Mount, 2.50mm Pitch, Single Row, 8 Circuits, 0.76µm Tin (Sn) Plating, Black, Glow-Wire Capable	<u>1054311108</u>
Nano-Fit Right-Angle Header, Surface Mount, 2.50mm Pitch, Single Row, 8 Circuits, 0.76µm Tin (Sn) Plating, Black, Glow-Wire Capable	<u>1054301108</u>
Nano-Fit Plug Housing, TPA Capable, 2.50mm Pitch, Single Row, 8 Circuits, Black, Glow-Wire Capable	<u>2002771108</u>

Nano-Fit Plug Housing, TPA Capable, 2.50mm Pitch, Single Row, 8 Circuits, Black, Panel Mount, Glow-Wire Capable	<u>2002771208</u>
--	-------------------

This document was generated on Sep 26, 2024