

REQUIREMENTS

Technical characteristics:

Shell: steel tin plated/Zinc Cr3 plated
Insulators: self-extinguishing black polyster, ULclass94V0
Contacts size 20: brass, gold 0.76 μ on mating end, bright tin on termination end over nickel on entire contact
Cycles : >500 for plating 6
>200 for plating 4

Harpoons: phosphor bronze, tin plated
Metal plate for electrical continuity: brass, tin plated/Zinc Cr3 plated
Nuts: brass, tin/Zinc Cr3 plated

Electrical characteristics:

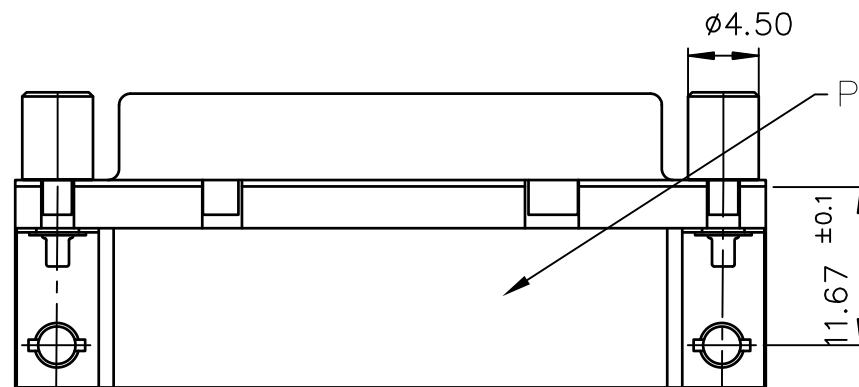
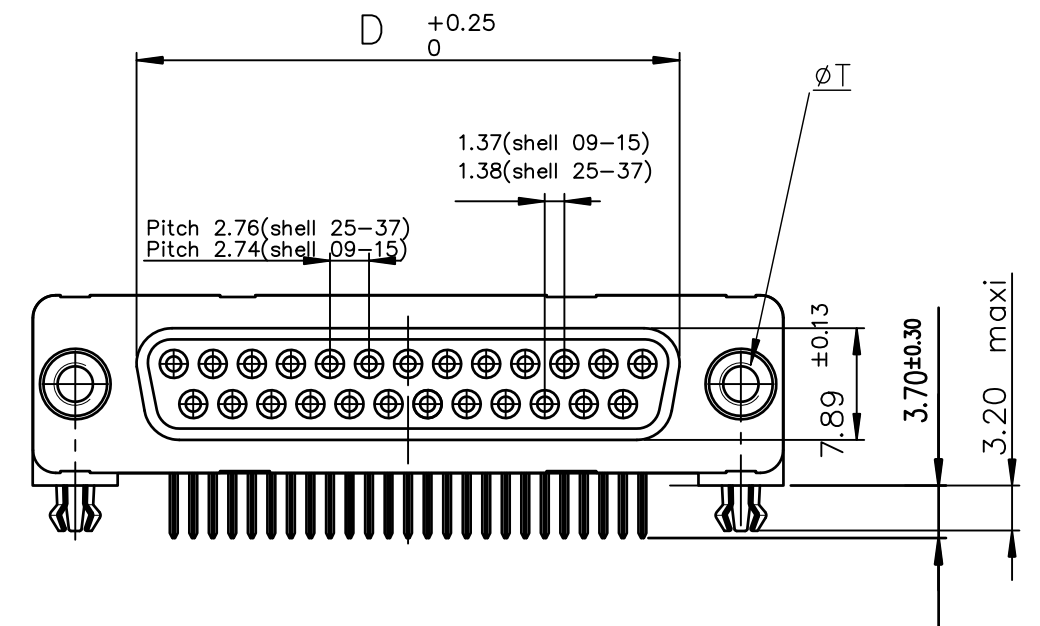
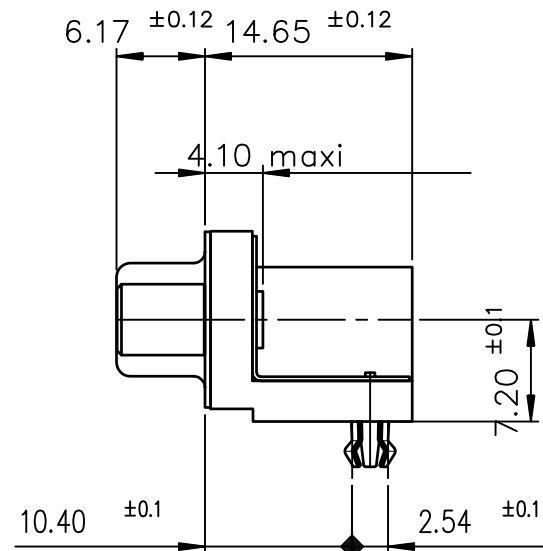
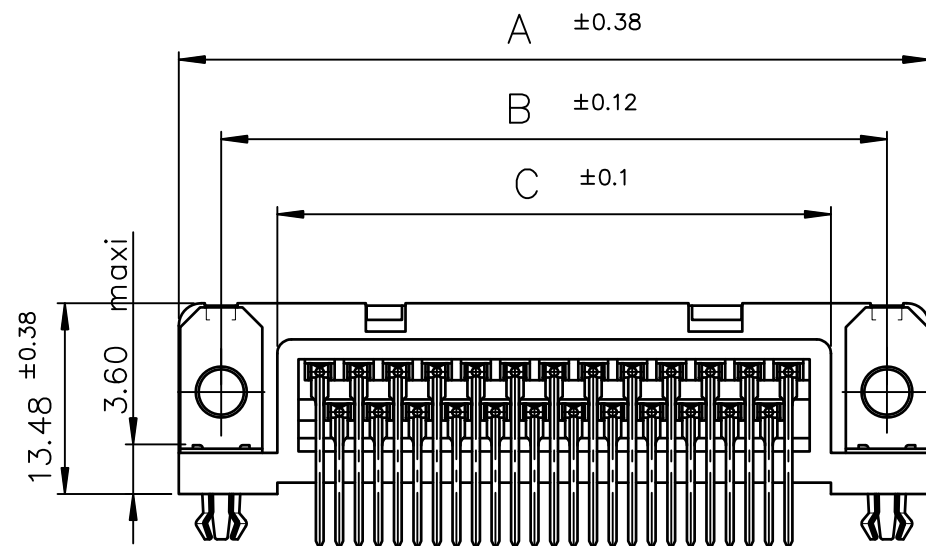
max. current rating: 5A
Test voltage: 1000V
Rated voltage: 300V
Contact resistance: $\leq 15\text{m}\Omega$
Shell resistance: $\leq 5\text{m}\Omega$
Insulation resistance: $\geq 5000\text{M}\Omega$

Climatic characteristics:

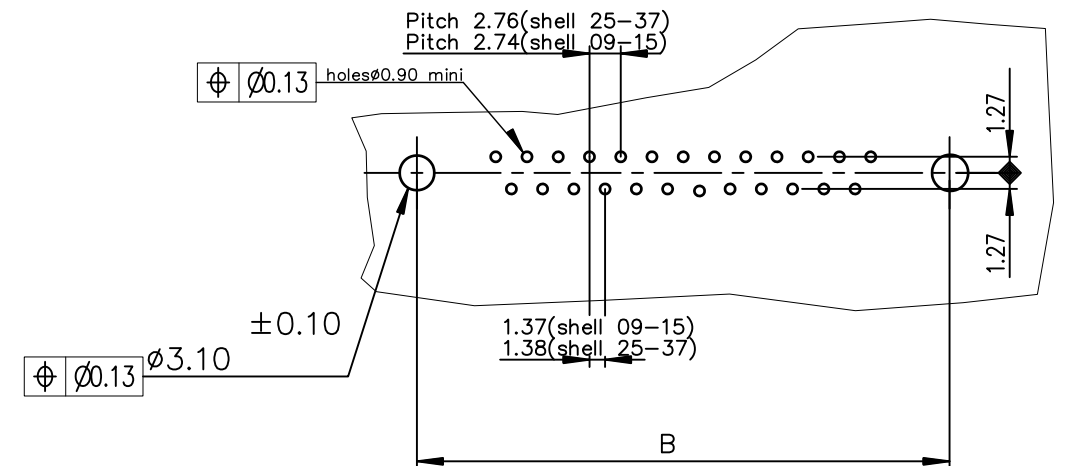
Operating temperature range: -55°C $+125^{\circ}\text{C}$

Dimensions:

in accordance with MIL-C-24308



Part Number & Date Code Printing

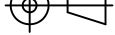

PC card drilling dimensions(after plating)
(thickness 1.60 \pm 0.20mm)

SHELL	A ± 0.38	B ± 0.12	C ± 0.10	D ± 0.25	PART NUMBER	PART NUMBER
09	30.81	24.99	16.96	16.21	D09S13B4G*00**	D09S13B6G*00**
15	39.14	33.32	25.18	24.54	D15S13B4G*00**	D15S13B6G*00**
25	53.03	47.04	39.12	38.25	D25S13B4G*00**	D25S13B6G*00**
37	69.32	63.50	55.68	54.71	D37S13B4G*00**	D37S13B6G*00**
					Gold flash	0,76 » gold

LF FOR LEAD FREE

Threaded ϕT M3 = I
Threaded ϕT 4.40 = V

FOR ROHS DETAILS REFER DWG. NO: C01-8646-0000

mat'l. code				surface		tolerance		projection	product family	
—				ISO 1302	ISO 406	ISO 1101	D—SUB			
ltr	ecn no	dr	date	tolerances unless otherwise specified				 MM	title	
C	I05—0124	JS	2005/07/27	angles	linear	±0.1			SOCKET CONNECTOR DELTA—D WITH	
D	I06—0074	SK	2006/06/08			±0.1			SCREWLOCK,HARPOON,METAL BRACKET	
E	ELX—I—15413	MP	2013/08/03			±1°			scale 1:1	
—	—	—	—	dr	JOHN SLEEBA	1994/08/01			dwg no	
—	—	—	—	engr	MITHUN PAUL	2013/08/03			sheet 1 of 1	
—	—	—	—	chr	MITHUN PAUL	2013/08/03			size	
—	—	—	—	appd	BIJU K PAUL	2013/08/03			A3	
sheet index		revision sheet		E					C01—8646—0292	
				1					CUSTOMER Drawing	