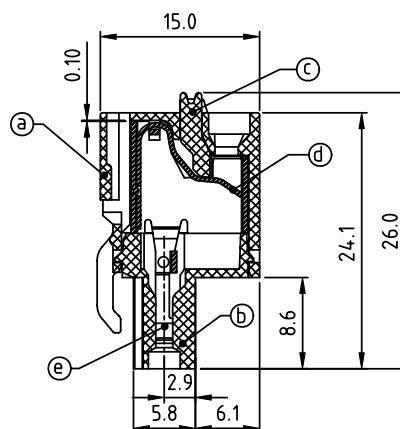
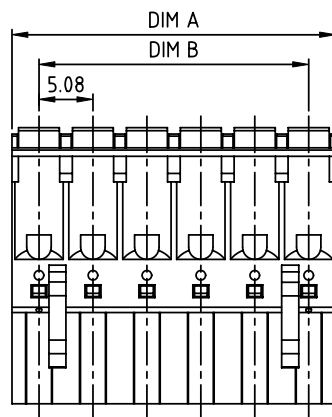


PRODUCT NUMBER

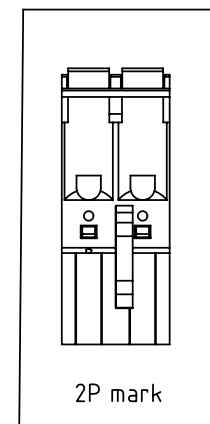
PITCH

HWxx50x100J0G

5.08 mm



SECTION Q-Q



## Material:

- Item (a) Top body: Thermoplastic (UL94V-0)
- Item (b) Bottom body: Thermoplastic (UL94V-0)
- Item (c) Terminal lever: Thermoplastic (UL94V-0) Orange (RAL2011/P)
- Item (d) Spring clamp: Stainless Steel
- Item (e) Female contact: PhBz (CuSn) Tin plated

## Electrical cULus

- Voltage rating: 300V
- Current rating: 10A
- Solid wire (AWG): 12-26
- Stranded wire (AWG): 12-26
- Wire strip length: 9-10mm
- Withstanding Voltage: 1.6KV
- Operating temperature: -40°C to +115°C
- Safety Approval: cULus

## Dimension

DIM A	Nx5.08
DIM B	(N-1)x5.08

N=Number of poles

POLES	Tolerance
2p-6p	±0.15
7p-12p	±0.20
13p-16p	±0.30
17p-24p	±0.40

PART NO.: HW xx 50 x 1 00J0 G

Solid block  
No. of poles  
02 2 poles  
03 3 poles  
...  
24 24 poles

Color  
0 Black (RAL9005)  
2 Red (RAL3001/D)  
3 Orange (RAL2011/P)  
4 Yellow (RAL1018/A)  
5 Green (RAL6018/T)  
6 Blue (RAL5015/A)  
8 Grey (RAL7035/D)  
9 White (RAL1102)  
C Green (RAL6018/U)

RoHS compliant  
(lead<4%)  
In copper Alloy

mat'l. code				surface ASME Y14.5 ✓	tolerance ASME Y14.5	projection	product family			
ltr	ecn	no	dr	date	tolerances unless otherwise specified	angles	TERMINAL BLOCK			
					X.±0.5	MM	title TERMINAL BLOCK SPRING CLAMP, PLUGGABLE PLUG CONTACT ON UP SIDE			
					X.X±0.3					
					X'±1"	scale	dwg no HWxx50x100J0G			
					dr EVIN ZHONG 051514	FCI	sheet 1 of 1 size A4			
					enr EVIN ZHONG 051514					
					chr HANKE FENG 051514					
					appd SHI JUN 051514					
sheet index	revision	A		1			type CUSTOMER Drawing			