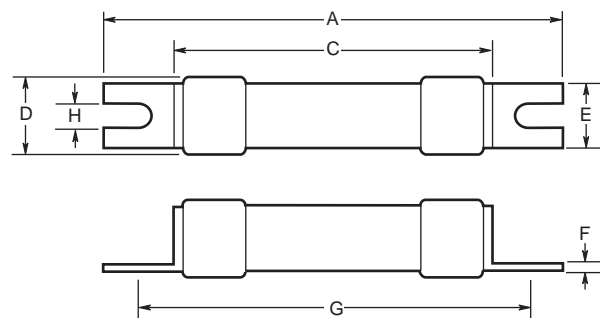


HRCI-CA Industrial Ceramic Body Fuse Bolt-On Mounting

CIF21B



Dimensional Data



CATALOG SYMBOL: CIF21B

1 - 30 Amps

600 Volts AC; 250 Volts DC

INTERRUPTING RATING: 200,000A RMS SYMMETRICAL

CSA C22.2 NO. 106-M92

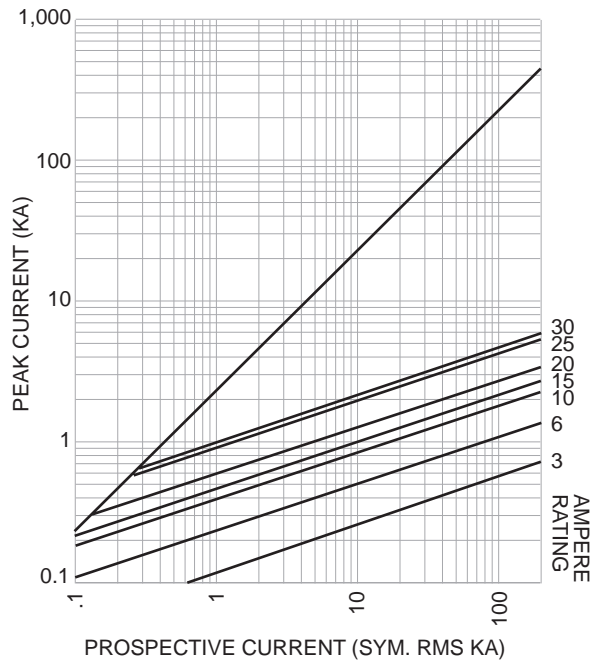
- Provides both overload and short-circuit protection to HRCI requirements.
- Offset blades for bolt-on mounting.
- CIF21B fuse fits the Bussmann-Camaster Fuseholder.

| Type | Catalog Symbol | Amps | Dimensions in Inches and (mm) | | | | | | | | |
|---------|----------------|-------|-------------------------------|----------------|---------------|-----------------|---------------|-----------------|----------------|------|--|
| | | | Overall | | Tags | | | Mounting | | Body | |
| | | | A | E | F | G | H | C | D | | |
| HRCI-CA | CIF21B | 1-30A | 2.15 (54.50) | .44 (11.10) | .03 (0.81) | 1.75 (44.50) | .19 (4.70) | 1.44 (35.50) | .54 (13.80) | | |

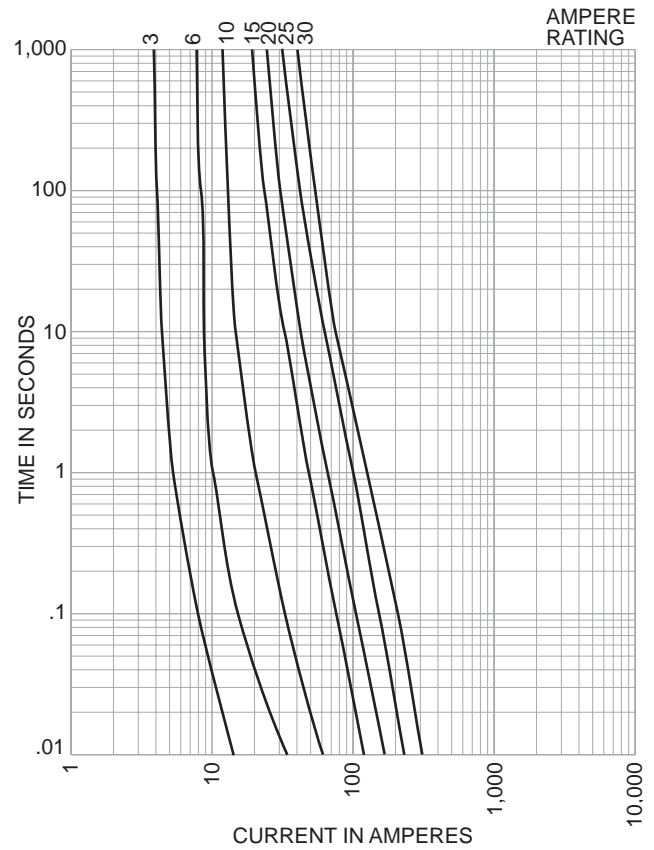
HRCI-CA Industrial Ceramic Body Fuse Bolt-On Mounting

CIF21B

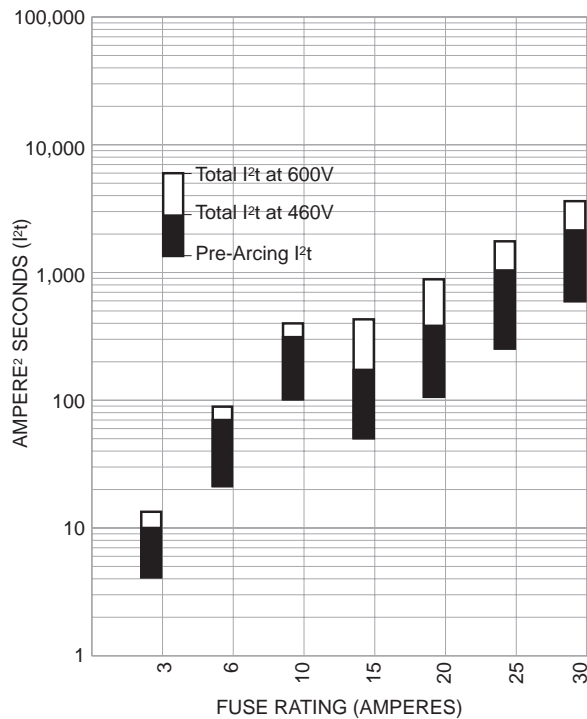
Peak Let-Through Curves (Cat. No. CIF21B)



Time/Current-Curves (Cat. No. CIF21B)



Energy Let-Through Curves (Cat. No. CIF21B)



| Ref | Power Dissipation @ Rated Amps | |
|----------|--------------------------------|--|
| | Watts | |
| 3CIF21B | 1.8 | |
| 6CIF21B | 1.5 | |
| 10CIF21B | 3.4 | |
| 15CIF21B | 2.4 | |
| 20CIF21B | 3.2 | |
| 25CIF21B | 3.6 | |
| 30CIF21B | 3.6 | |

The only controlled copy of this BIF document is the electronic read-only version located on the Bussmann Network Drive. All other copies of this BIF document are by definition uncontrolled. This bulletin is intended to clearly present comprehensive product data and provide technical information that will help the end user with design applications. Bussmann reserves the right, without notice, to change design or construction of any products and to discontinue or limit distribution of any products. Bussmann also reserves the right to change or update, without notice, any technical information contained in this bulletin. Once a product has been selected, it should be tested by the user in all possible applications.