



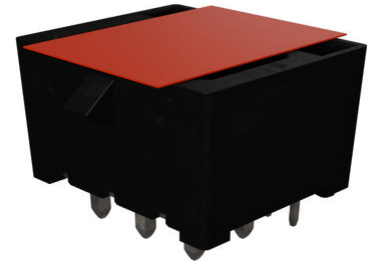
**Part Number :** [2215910061](#)

**Product Description :** Micro-Fit+ OCP M-PIC 12V Vertical Header, Through Hole, 3.00mm Pitch, 3 Rows, 12 Circuits (6 Power, 6 Signal), Matte Tin (Sn) Plating, Black, Tape and Reel

**Series Number :** 221591

**Status :** Active

**Product Category :** PCB Headers and Receptacles



---

## Documents and Resources

### Drawings

[2215910061 sd.pdf](#)

[2215910001-PK-000.pdf](#)

[STEP AP242](#)

[SOLIDWORKS](#)

[Creo](#)

[Symbol and Footprint \(Multi-Format\)](#)

### Specifications

[2217510001-AS-000.pdf](#)


[2217510001-PS-000.pdf](#)

[2217510001-TS-000.pdf](#)

---

## Product Environment Compliance

### Compliance

|                    |   |
|--------------------|---|
| GADSL/IMDS         | Not Relevant  |
| China RoHS         |  per SJ/T 11365-2006 |
| EU ELV             | Not Relevant  |
| Low-Halogen Status | Low-Halogen per IEC 61249-2-21  |
| REACH SVHC         | Not Contained per D(2025)7771-DC (04 Feb 2026)  |
| EU RoHS            | Compliant per EU 2015/863   |

## Compliance Statements

- EU RoHS
- REACH SVHC
- Low-Halogen

## Industry Documents

- IPC 1752A Class C
- IPC 1752A Class D
- Molex Product Compliance Declaration
- IEC-62474
- chemSHERPA (xml)

## Substances of Interest

- PFAS

## EU RoHS Certificate of Compliance

## Additional Product Compliance Information

---

## Part Details

### General

|                |   |
|----------------|---|
| Status         | Active  |
| Category       | PCB Headers and Receptacles   |
| Series         | 221591  |
| Description    | Micro-Fit+ OCP M-PIC 12V Vertical Header, Through Hole, 3.00mm Pitch, 3 Rows, 12 Circuits (6 Power, 6 Signal), Matte Tin (Sn) Plating, Black, Tape and Reel |
| Application    | Power, Signal, Wire-to-Board  |
| Component Type | PCB Header  |
| Product Name   | Micro-Fit+ OCP M-PIC  |
| UPC            | 198282687689  |

### Electrical

|                               |                              |
|-------------------------------|------------------------------|
| Current - Maximum per Contact | 13.5A (Power), 1.0A (Signal) |
| Voltage - Maximum             | 250V AC (RMS)/DC             |

### Physical

|                    |    |
|--------------------|----|
| Breakaway          | No |
| Circuits (Loaded)  | 12 |
| Circuits (maximum) | 12 |

|                                |                              |
|--------------------------------|------------------------------|
| Color - Resin                  | Black                        |
| Durability (mating cycles max) | 30                           |
| First Mate / Last Break        | Yes                          |
| Glow-Wire Capable              | No                           |
| Keying to Mating Part          | No                           |
| Lock to Mating Part            | Yes                          |
| Material - Metal               | High Copper Alloy            |
| Material - Plating Mating      | Matte Tin                    |
| Material - Plating Termination | Matte Tin                    |
| Material - Resin               | Liquid Crystal Polymer (LCP) |
| Net Weight                     | 1.250/g                      |
| Number of Rows                 | 3                            |
| Orientation                    | Vertical                     |
| Packaging Type                 | Embossed Tape on Reel        |
| PCB Retention                  | Yes                          |
| PCB Thickness - Recommended    | 1.57mm                       |
| PC Tail Length                 | 3.18mm                       |
| Pitch - Mating Interface       | 3.00mm, 1.50mm               |
| Pitch - Termination Interface  | 3.00mm, 1.50mm               |
| Plating min - Mating           | 1.524µm                      |
| Polarized to Mating Part       | Yes                          |
| Polarized to PCB               | Yes                          |
| (p)ower-(s)ignal Configuration | 6p - 6s                      |
| Shrouded                       | Shrouded                     |
| Temperature Range - Operating  | -40° to +105°C               |
| Termination Interface Style    | Through Hole                 |

---

## Mates With / Use With

### Mates with Part(s)

| Description  | Part Number                   |
|--|-------------------------------|
| Micro-Fit+ OCP M-PIC Three Row Receptacle Housings | <u><a href="#">221626</a></u> |