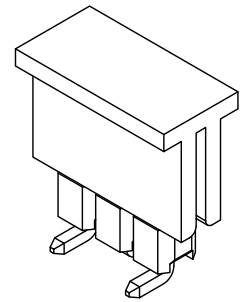
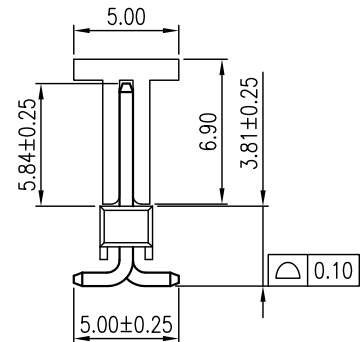
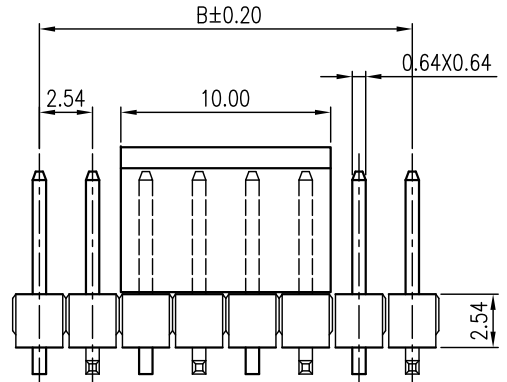
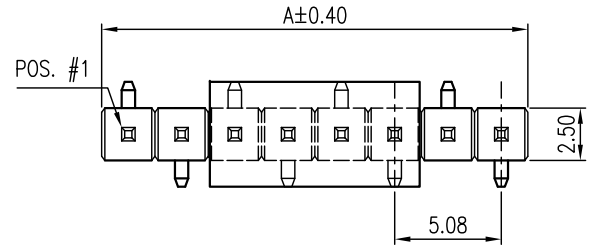


This document is the property of Amphenol Corporation and is delivered on the express condition that is not to be disclosed, reproduced or used, in whole or in part, for manufacture or sale by anyone other than Amphenol Corporation without its prior consent, and that no right is granted to disclose or to use any information in this document.

The marking on this product doesn't contain environmental hazardous materials per Material Specification 55-00259 for Sony GP compliant or per directive 2011/65/EU for RoHS compliant.

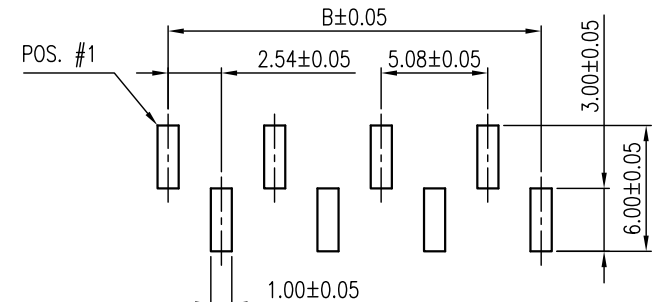
ORIGINAL

REVISIONS				
SYM	ECN No.	DESCRIPTION	DATE	APPROVED
A	NE-15097	RELEASE REVISION	08/18/2015	Roger Tsai



NOTES:

- INSULATOR: LCP, UL 94V-0, COLOR- BLACK
- CONTACT: COPPER ALLOY, "XXX"- PIN CONTACT AREA PLATING  
 "005"- 15μ" GOLD  
 "010"- 30μ" GOLD  
 "018"- FULL GOLD FLASH  
 "032"- FULL TIN  
 "036"- 10μ" GOLD  
 GOLD FLASH OR MATTE TIN 100u" ON SOLDERING AREA  
 UNDER 50u" NICKEL PLATING OVERALL
- THIS PRODUCT DOESN'T CONTAIN ENVIRONMENTAL HAZARDOUS MATERIALS PER DIRECTIVE 2011/65/EU FOR RoHS.
- PACKING IS PER AMTA PACKING SPECIFICATION PKS-0001
- CURRENT RATING: 3.0 Amps/contact MAX.
- PRODUCT SPECIFICATION REFER TO : PS-7501.
- TEST SUMMARY REFER TO : TS-7501.



RECOMMENDED PCB LAYOUT

G800 MU 298 XXX EU	1 x 10 = 10	25.40	22.86
G800 MU 299 XXX EU	1 x 9 = 9	22.86	20.32
G800 MU 300 XXX EU	1 x 8 = 8	20.32	17.78
G800 MU 301 XXX EU	1 x 7 = 7	17.78	15.24
G800 MU 302 XXX EU	1 x 6 = 6	15.24	12.70
G800 MU 303 XXX EU	1 x 5 = 5	12.70	10.16
G800 MU 304 XXX EU	1 x 4 = 4	10.16	7.62
G800 MU 305 XXX EU	1 x 3 = 3	7.62	5.08
G800 MU 306 XXX EU	1 x 2 = 2	5.08	2.54
PART NUMBER	NO. OF POS.	A	B

TOLERANCE		APPROVALS		DATE	TITLE	G800 SERIES, PIN HEADER SINGLE ROW, 2.54 PITCH VERTICAL, SMT TYPE		Amphenol® Amphenol Corporation Amphenol Taiwan Corporation	
X.		DRAWN	Aqua Chou	08/18/2015		UNIT	mm	SIZE	A3
X.X	±0.30	CHECKED	Roger Tsai	08/18/2015		SCALE	NA	SHEET	1 OF 2
X.XX	±0.20	APPROVED	Roger Tsai	08/18/2015		PART No.	G800MUXXXXXXEU		
X.XXX	±0.10	DWG TYPE	CUST DWG		PROJECT CODE	HEAD		DWG No.	G800MUXXXXXXEU
ANGULAR	±1°								
UNLESS OTHERWISE SPECIFIED									
									REV. A

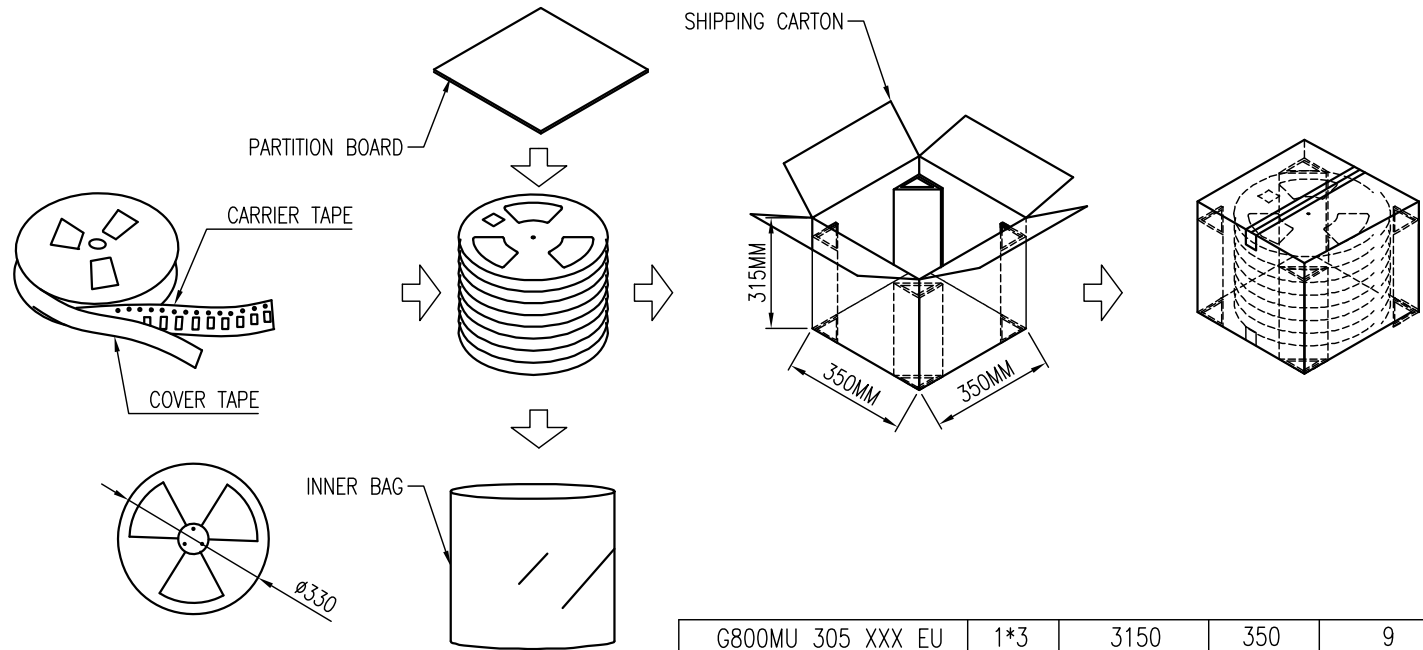
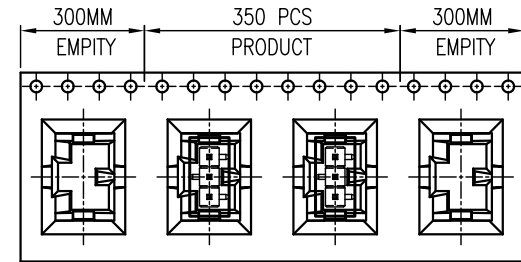
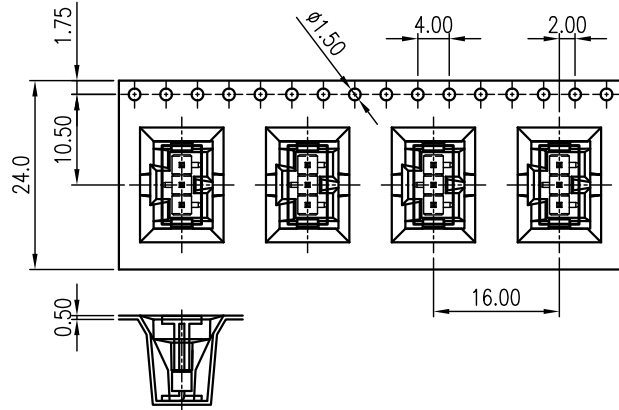
This document is the property of Amphenol Corporation and is delivered on the express condition that it is not to be disclosed, reproduced or used, in whole or in part, for manufacture or sale by anyone other than Amphenol Corporation without its prior consent, and that no right is granted to disclose or to use any information in this document.  
The marking on this product doesn't contain environmental hazardous materials per Material Specification 55-00259 for Sony GP compliant or per directive 2011/65/EU for RoHS compliant.



ORIGINAL



REVISIONS				
SYM	ECN No.	DESCRIPTION	DATE	APPROVED
A	NE-15097	RELEASE REVISION	08/18/2015	Roger Tsai



G800MU 305 XXX EU	1*3	3150	350	9	1.4	5.0
FOR PRODUCT PART NO	POSITION	PARTS PER CARTON (S.P.Q)	PARTS PER PEEL	TOTAL PEELS PER CARTON	N.W.(kg)	G.W.(kg)

TOLERANCE	APPROVALS	DATE	TITLE		UNIT	SCALE	SIZE	PART No.
X. ±0.30 X.X ±0.20 X.XX ±0.10 X.XXX ±0.10	DRAWN Aqua Chou CHECKED Roger Tsai APPROVED Roger Tsai	08/18/2015 08/18/2015 08/18/2015	G800 SERIES, PIN HEADER SINGLE ROW, 2.54 PITCH VERTICAL, SMT TYPE					
ANGULAR ±1°	DWG TYPE CUST DWG	PROJECT CODE HEAD			NA	2 OF 2		G800MUMXXXXXEU
UNLESS OTHERWISE SPECIFIED								REV. A

**Amphenol®**  
Amphenol Corporation  
Amphenol Taiwan Corporation

