

PiTFT Pibow+ Kit for Pi 2 / B+ / Pi 3 B+

PRODUCT ID: 2779

66 IN STOCK

1

ADD TO CART

1-9

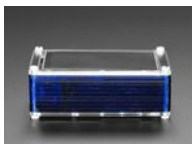
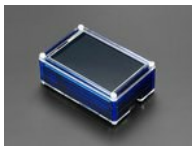
10-99

100+

ADD TO WISHLIST

[DESCRIPTION](#)

[TECHNICAL DETAILS](#)





DESCRIPTION

What's better than our [2.8" 320x240](#) and [3.5" 480x320](#) PiTFT Pluses? How about a custom-designed enclosure for said PiTFTs, in a handsome midnight-blue?

Crafted out of eleven unique layers, each laser-cut from colourful high-quality cast acrylic and once stacked they securely contain a [Raspberry Pi 2, Model B+](#), [Pi 3](#), or [Pi 3 B+](#) while leaving the primary ports accessible.

Weighing only 92 grams the case is lightweight and ideal for mounting to any surface. No tools are required for assembly or disassembly.

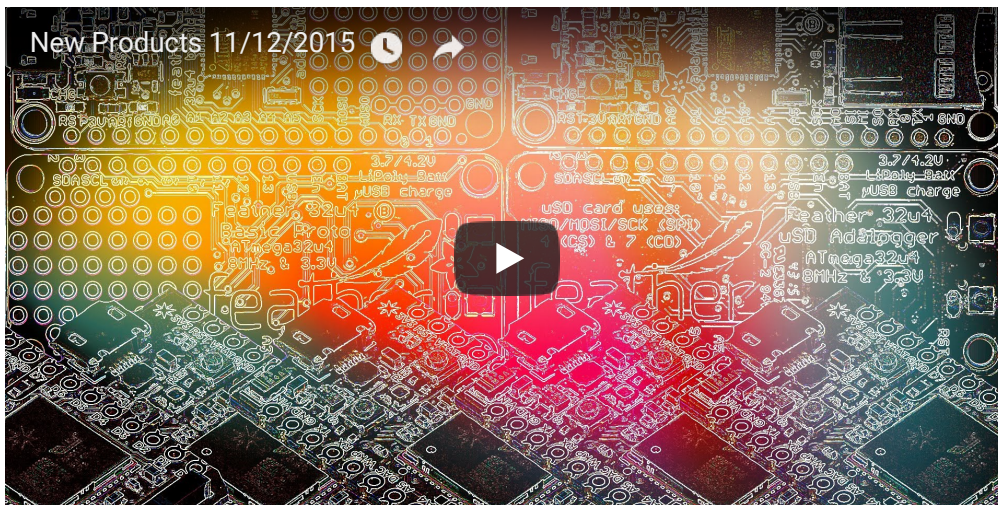
Features:

- Compatible with [Raspberry Pi 2](#), [Pi 3 Model B](#), and [Pi 3 Model B+](#).
- Custom top layers provided for both the [2.8" 320x240](#) and the [3.5" 480x320](#) PiTFT+ variants
- Protects your beloved Pi!
- Leaves all primary ports accessible
- Made from lightweight high-quality cast acrylic
- Great for hacking and tinkering!

[More information available on the Pimoroni website.](#)

Please note: If using with the [480x320 3.5" PiTFT+](#) you will need to remove the mounting holes from the side of the PiTFT board (they're designed to be broken off cleanly)! **PiTFT and Raspberry Pi not included (but we do sell them in the shop)**

Remember, this enclosure is only compatible with the Raspberry Pi 2, Raspberry Pi 3 Model B and the Raspberry Pi 3 Model B+! This does not work with the Raspberry Pi 1 Model B or B+.



TECHNICAL DETAILS

- Assembled Dimensions: 99mm x 65.9mm x 44.1mm / 3.9" x 2.6" x 1.7"

For [product support, replacement parts and warranty](#) for Pimoroni products visit the [Pimoroni forums](#) or [contact Pimoroni directly](#).

Revision History:

- As of September 20, 2018 this is now compatible with the Raspberry Pi 3 Model B+.

MAY WE ALSO SUGGEST...



Adafruit Pi Protector for



PiTFT Plus Assembled



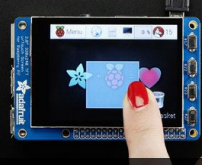
Pibow Coupé Flotilla -



Adafruit Raspberry Pi B+ / Pi



Rainbow Pibow - Enclosure



Adafruit PiTFT Plus



Ninja Pibow - Enclosure for



PiTFT Plus 480x320 3.5"



Pibow Coupé - Enclosure



Pi Model B+ / Pi 2 / Pi 3 -

DISTRIBUTORS [EXPAND TO SEE DISTRIBUTORS](#)

[CONTACT](#)

[SUPPORT](#)

[DISTRIBUTORS](#)

[EDUCATORS](#)

[JOBS](#)

[FAQ](#)

[SHIPPING & RETURNS](#)

[TERMS OF SERVICE](#)

[PRIVACY & LEGAL](#)

[ABOUT US](#)

ENGINEERED IN NYC Adafruit®

"Sometimes magic is just spending more time on something than anyone would reasonably expect" -
Teller



4.9 ★★★★★
Google
Customer Reviews