



Pushing Performance  
Since 1945

# Han K6/12 M Crimp

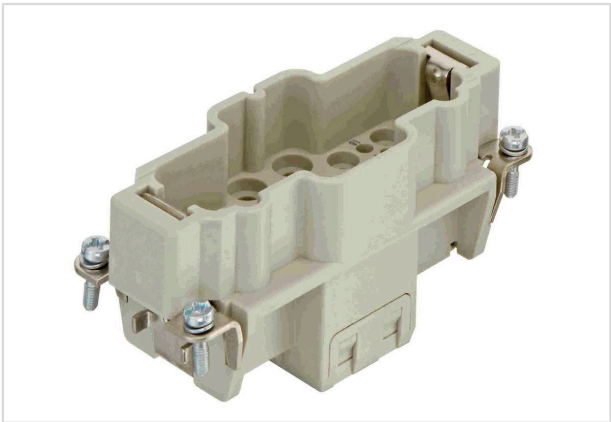


Image is for illustration purposes only. Please refer to product description.

Part number	09 38 018 3002
Specification	Han K6/12 M Crimp
HARTING eCatalogue	<a href="https://harting.com/09380183002">https://harting.com/09380183002</a>

## Identification

Category	Inserts
Series	Han-Com <sup>®</sup>
Identification	Han <sup>®</sup> K 6/12

## Version

Termination method	Crimp termination
Gender	Male
Size	16 B
Number of contacts	18
Number of signal contacts	12
Number of power contacts	6
PE contact	Yes
Details	Please order crimp contacts separately. Please order coding pins separately.

## Technical characteristics

Conductor cross-section	1.5 ... 6 mm <sup>2</sup> Power
	0.14 ... 2.5 mm <sup>2</sup> Signal
Wire outer diameter	≤5 mm
Rated current	40 A
Rated voltage	690 V
Rated impulse voltage	8 kV
Pollution degree	3



**Pushing Performance**  
Since 1945

## Technical characteristics

Rated current (signal)	10 A
Rated voltage conductor-earth (signal)	230 V
Rated voltage conductor-conductor (signal)	400 V
Rated impulse voltage (signal)	4 kV
Pollution degree (signal)	3
Insulation resistance	$>10^{10} \Omega$
Tightening torque	1.2 Nm PE screw M4
Recommended screw driver	Slotted 0.8 x 4.5 PH2
Limiting temperature	-40 ... +125 °C
Mating cycles	$\geq 500$

## Material properties

Material (insert)	Polycarbonate (PC)
Colour (insert)	RAL 7032 (pebble grey)
Material flammability class acc. to UL 94	V-0
RoHS	compliant
ELV status	compliant
China RoHS	e
REACH Annex XVII substances	Not contained
REACH ANNEX XIV substances	Not contained
REACH SVHC substances	Not contained
California Proposition 65 substances	Not contained
Fire protection on railway vehicles	EN 45545-2 (2020-08)
Requirement set with Hazard Levels	R22 (HL 1-3) R23 (HL 1-3)

## Specifications and approvals

Specifications	IEC 60664-1 IEC 61984
Approvals	DNV GL

## Commercial data

Packaging size	1
Net weight	61.6 g



**Pushing Performance**  
Since 1945

Commercial data

Country of origin	Romania
European customs tariff number	85366990
GTIN	5713140186415
eCl@ss	27440205 Contact insert for industrial connectors
ETIM	EC000438
UNSPSC 24.0	39121522