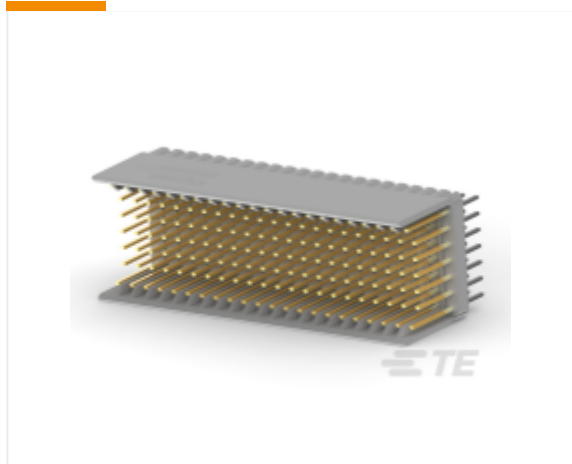




© 2021 TE Connectivity Ltd. family of companies. All Rights Reserved

[Connectors](#) > [PCB Connectors](#) > [Backplane Connectors](#) > [Hard Metric Backplane Connectors](#) > [Hard Metric](#)**188835-1** ✓ ACTIVE

Z-PACK 2mm HM, Hard Metric Backplane Connectors, PCB Mount Header,  $\leq 1$  Gb/s, 22 Column, 7 Row, Mezzanine, Board-to-Board, 154 Position

Z-PACK    Z-PACK 2mm HM

TE Internal #: 188835-1

TE Internal Description: Z-PACK/B M-HDR 154P.

PCB Connector Assembly Type : PCB Mount Header

Data Rate (Gb/s):  $\leq 1$ [+ More](#)[Add to List](#) ▼ | [Similar Products](#) | [Digital Datasheet](#)[Compatible Parts & Tooling](#)

## DOCUMENTS

## FEATURES



PRODUCT COMPLIANCE



EU ROHS DIRECTIVE 2011/65/EU

Not Compliant

Substances: Pb

*This declaration covers EU Directive 2011/65/EU incl. Delegated Directive 2015/863/EU. The restrictions under 2015/863/EU apply as of 22 July 2021 for EEE categories 8 (medical devices) and 9 (monitoring and control equipment).*

EU ELV DIRECTIVE 2000/53/EC

Not Compliant

Substances: Pb

CHINA ROHS 2 DIRECTIVE MIIT ORDER NO 32, 2016

Restricted Materials Above Threshold

部件名称 (Component Name) 188835-1	
有害物质 (Hazardous Substance)	继电器 (Connector Systems)
铅 (Pb)	X
汞 (Hg)	○
六价铬 (Cr6)	○
多溴联苯 (PBB)	○
多溴二苯醚 (PBDE)	○
本表格依据SJ/T 11364标准的规定编制。 This table is compiled according to SJ/T 11364 standard.	
○: 表示该有害物质在该部件所有均质材料中的含量均在GB/T 26572标准规定的限量要求以下。 Indicates that the concentration of the hazardous substance in all homogeneous materials of the part is below the relevant threshold of the GB/T 26572 standard.	
X: 表示该有害物质至少在该部件的某一均质材料中的含量超出GB/T 26572标准规定的限量要求。 Indicates that the concentration of the hazardous substance in at least one homogeneous material of the part is above the relevant threshold of the GB/T 26572 standard.	
电子电气产品的环保使用期限依据SJ/T 11388标准的规定确定。 The EFUP value of EEP is defined according to SJ/T 11388 standard.	

Feedback

EU REACH REGULATION (EC) NO. 1907/2006

Current ECHA Candidate List: **JAN 2021 (211)**

Candidate List Declared Against: **JAN 2021 (211)**

SVHC > Threshold:

Pb (13% in Component Part)

Article Safe Usage Statements:

*Do not eat, drink or smoke when using this product. Wash thoroughly after handling. Recycle if possible and dispose of the article by following all applicable governmental regulations relevant to your geographic location.*

---

## HALOGEN CONTENT

Not Low Halogen - contains Br or Cl > 900 ppm.

---

## SOLDER PROCESS CAPABILITY

Not applicable for solder process capability

---

## STATEMENT OF COMPLIANCE

[Statement of Compliance pdf](#)

---

## COMPLIANCE DOCUMENTS

There may be Environmental Compliance related documents on the [DOCUMENTATION Tab](#)

---


## DISCLAIMER

This information is provided based on reasonable inquiry of our suppliers and represents our current actual knowledge based on the information they provided. This information is subject to change. The part numbers that TE has identified as EU RoHS compliant have a maximum concentration of 0.1% by weight in homogenous materials for lead, hexavalent chromium, mercury, PBB, PBDE, DBP, BBP, DEHP, DIBP, and 0.01% for cadmium, or qualify for an exemption to these limits as defined in the Annexes of Directive 2011/65/EU (RoHS2). Finished electrical and electronic equipment products will be CE marked as required by Directive 2011/65/EU. Components may not be CE marked. Additionally, the part numbers that TE has identified as EU ELV compliant have a maximum concentration of 0.1% by weight in homogenous materials for lead, hexavalent chromium, and mercury, and 0.01% for cadmium, or qualify for an exemption to these limits as defined in the Annexes of Directive 2000/53/EC (ELV). Regarding the REACH Regulation, the information TE provides on SVHC in articles for this part number is based on the latest European Chemicals Agency (ECHA) 'Guidance on requirements for substances in articles' posted at this URL: <https://echa.europa.eu/guidance-documents/guidance-on-reach>

Feedback


# Compatible Parts

## Filter By Specification



### HM Receptacle Connector: Traditional...

From: \$18.621  
In-Stock

 [BUY ON TE.COM](#)

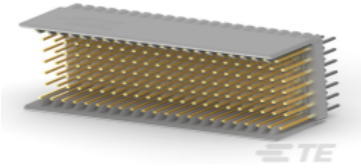
# Products with Similar Specs

## THIS PRODUCT


HARD METRIC BACKPLANE CONNECTORS

**188835-1**

Z-PACK 2mm HM, Hard Metric Backplane Connectors, PCB Mount...



From **\$10.008**

In-Stock 

PCB Connector Assembly Type : **PCB Mount Header**

Data Rate : **≤1 Gb/s**

Number of Columns : **22**

Number of Rows : **7**

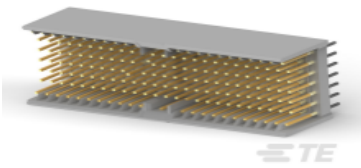
Backplane Architecture : **Mezzanine**

## TOP RESULTS ?


HARD METRIC BACKPLANE CONNECTORS

**188834-1**

Z-PACK 2mm HM, Hard Metric Backplane Connectors, PCB Mount...



From **\$11.352**

In-Stock 

PCB Connector Assembly Type : **PCB Mount Header**

Data Rate : **≤1 Gb/s**

Number of Columns : **25**

Number of Rows : **7**

Backplane Architecture : **Mezzanine**

HARD METRIC BACKPLANE CONNECTORS

**100668-1**

Z-PACK 2mm HM, Hard Metric Backplane Connectors, F...



From **\$13.294**

PCB Connector Assembly Type : **PCB Mount Header**

Data Rate : **≤1 Gb/s**

Number of Columns : **22**

Number of Rows : **7**

Backplane Architecture :

Feedback

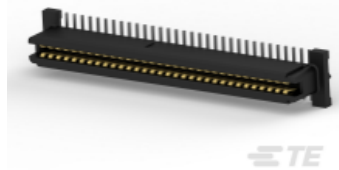
[View All Similar Products](#)

# Customers Also Bought

TE Part #: **SMF21K2JT**CGS SM, Surface Mount  
Resistors, Power Resistor, 2...

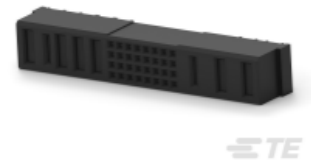
\$0.539 per unit

Inventory: 460

 Add To CartTE Part #: **120521-1**Free Height, PCB Mount  
Receptacle, Vertical...

\$5.986 per unit

Inventory: 527

 Add To CartTE Part #: **1-6450869-4**MULTI-BEAM XLE,  
Rectangular Power...

\$12.900 per unit

Inventory: 269

 Add To Cart

Feedback

Also in the Series | [Z-PACK 2mm HM](#)Backplane Coding  
Keys (60)Backplane Connector  
Housings (2)Backplane Guide  
Hardware (37)