



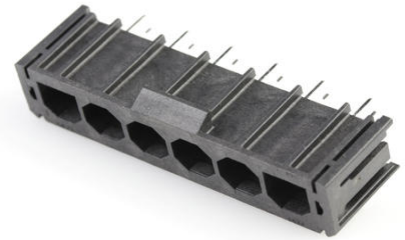
Part Number : [460071106](#)

Product Description : Sabre Right-Angle Header, 7.50mm Pitch, 6 Circuits, Glow-Wire Capable, 3.81mm Tail Length. for 1.60mm PCB, without Board Lock, Complies with the UL1977 finger proof access requirement

Series Number : 46007

Status : Active

Product Category : PCB Headers and Receptacles



Documents and Resources

Drawings

[460071106_sd.pdf](#)

[PK-43160-0010-001.pdf](#)

3D Models and Design Files

[STEP AP242](#)

[SOLIDWORKS](#)

[Creo](#)

[Symbol and Footprint \(Multi-Format\)](#)


[SYM-46007-1106-001.zip](#)

Specifications

[PS-44441-9999-001.pdf](#)

Product Environment Compliance

Compliance

GADSL/IMDS	Not Relevant
China RoHS	 per SJ/T 11365-2006
EU ELV	Not Relevant
Low-Halogen Status	Not Low-Halogen per IEC 61249-2-21
REACH SVHC	Not Contained per D(2025)7771-DC (04 Feb 2026)

EU RoHS

Compliant per EU 2015/863

Compliance Statements

- EU RoHS
- REACH SVHC
- Low-Halogen

Industry Documents

- IPC 1752A Class C
- IPC 1752A Class D
- Molex Product Compliance Declaration
- IEC-62474
- chemSHERPA (xml)

Substances of Interest

- PFAS

EU RoHS Certificate of ComplianceAdditional Product Compliance Information**Part Details****General**

Status	Active
Category	PCB Headers and Receptacles
Series	46007
Description	Sabre Right-Angle Header, 7.50mm Pitch, 6 Circuits, Glow-Wire Capable, 3.81mm Tail Length. for 1.60mm PCB, without Board Lock, Complies with the UL1977 finger proof access requirement
Application	Power, Wire-to-Board
Comments	This Molex product is manufactured from material that has the following ratings, tested by independent agencies: a) A Glow Wire Ignition Temperature (GWIT) of at least 775 deg C per IEC 60695-2-13. b) A Glow Wire Flammability Index (GWFI) above 850 deg C per IEC 60695-2-12 and hence complies with the

	requirements set out in the International Standard IEC 60335-1 5th edition - household and similar electrical appliances - safety, section 30 Resistance to heat and fire. The customers using this product must determine its suitability for use in their particular application through testing or other acceptable means as described in end-product glow-wire flammability test standard IEC 60695-2-11 and any applicable product end-use standard(s). If it is determined during the customer's evaluation of suitability, that higher performance is required, please contact Molex for possible product options.
Component Type	PCB Header
Product Name	Sabre
UPC	822350247702

Agency

UL	E29179
----	--------

Electrical

Current - Maximum per Contact	18.0A
Voltage - Maximum	600V

Physical

Breakaway	No
Circuits (Loaded)	6
Circuits (maximum)	6
Color - Resin	Black
Durability (mating cycles max)	25
First Mate / Last Break	No
Flammability	94V-0

Glow-Wire Capable	Yes
Guide to Mating Part	No
Keying to Mating Part	No
Lock to Mating Part	Yes
Material - Metal	Brass
Material - Plating Mating	Matte Tin
Material - Plating Termination	Matte Tin
Material - Resin	Nylon
Net Weight	7.636/g
Number of Rows	1
Orientation	Right Angle
Packaging Type	Bag
PCB Locator	No
PCB Retention	No
PCB Thickness - Recommended	1.60mm
PC Tail Length	3.81mm
Pitch - Mating Interface	7.50mm
Pitch - Termination Interface	7.50mm
Plating min - Mating	1.520µm
Plating min - Termination	1.520µm
Polarized to Mating Part	Yes
Polarized to PCB	Yes
Shrouded	Shrouded
Stackable	No
Temperature Range - Operating	-40° to +105°C
Termination Interface Style	Through Hole

Solder Process Data

Max-Duration	5
Lead-Free Process Capability	WAVE
Max-Cycle	1
Max-Temp	235

Mates With / Use With

Mates with Part(s)

Description	Part Number
7.50mm Pitch Sabre Receptacle Crimp Housing, UL 94V-0, 6 Circuits, Black	<u>444412006</u>

This document was generated on Apr 30, 2026