

# LUMAWISE MOTION PROGRAMMABLE

## Street Lighting Motion Sensor

The LUMAWISE Motion Programmable is a motion sensor designed for streetlighting. Enabling energy savings from dimming the luminaire, while still being able to react to motion and bring a luminaire to full brightness for safety and security reasons.

LUMAWISE Motion Programmable will fit into the Zhaga-D4i ecosystem, the new standard in smart cities. Working as a standalone control device or in combination with Zhaga-D4i photocell or communication node for greater levels of controls.

This programmable version of LUMAWISE Motion allows a user to self-define parameters like brightness levels, on time and ambient light on and off levels.

### BENEFITS

- Interoperability guaranteed from the Zhaga-D4i logo and certification
- Detected motion will cause a dimmed luminaire to brighten allowing for energy savings while still having the safety and security of a lit area
- Compact design to keep the aesthetics of modern designed luminaires
- One handed easy under luminaire connection allows for an installer to work below the luminaire

### APPLICATIONS

- Street lighting
- Park, recreational and walkway lighting
- Cycle ways
- Station lighting
- High bay lighting



Zhaga-D4i certified

# LUMAWISE Motion Programmable

## Street lighting Motion Sensor

### FEATURES

- Programmable version is configurable via the DALI Bus
- 30mx6m rectangular detection zone (@5m height)
- Ø10m circular detection zone (@5m height)
- Default parameters
  - On: 35lux, Off: 18lux
  - No motion: 20% brightness, motion: 100% brightness
  - On time: 2 minutes
- Tested on poles from 5 to 12m high
- Motion detected from PIR sensor
- Detects pedestrians, wheelchair users, runners and cyclists
- Masks available for self-defined detection zone
- Lighting control of the driver from the D4i communication protocol
- Zhaga book 18 interface (4 position connection)
- Zhaga-D4i Type B device, with application controller
- Polarity insensitive DALI input
- IP66, IP68 and IK07
- -40°C to 65°C operating temperature range
- -40°C to 32°C functional detection temperature range
- At ambient temperatures greater than 32°C, light output will be switched to 50% brightness
- Rolling calibration sequence to filter out reflected light from the luminaire
- Pin out
  - N/C
  - DALI-/GND
  - DALI+
  - N/C

### MECHANICAL

- Height: 42.0mm
- Diameter: 79.7mm

### MATERIALS

- Dome: HDPE and polycarbonate
- Base: PBT

### ELECTRICAL

- 6-8mA average power consumption, 25mA on startup
- Powered from the DALI bus

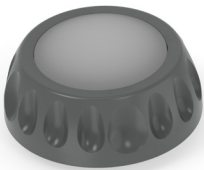
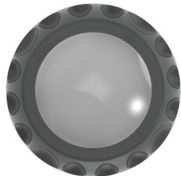


### STANDARDS

- Zhaga book 18 editions 1, 2 and 3, (upcoming edition 4)
- DiiA: parts 351
- IEC 62386: part 303, 101 and 103
- CE and UKCA marked
- UL773
- IEC 61347-1
- IEC 61347-2-11
- Elexon charge code: TBC

### SPECIFICATIONS

- Application Spec: 114-160511
- Product Spec: [108-160457](#)

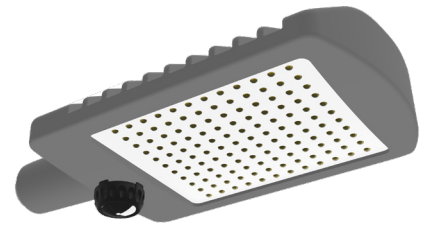
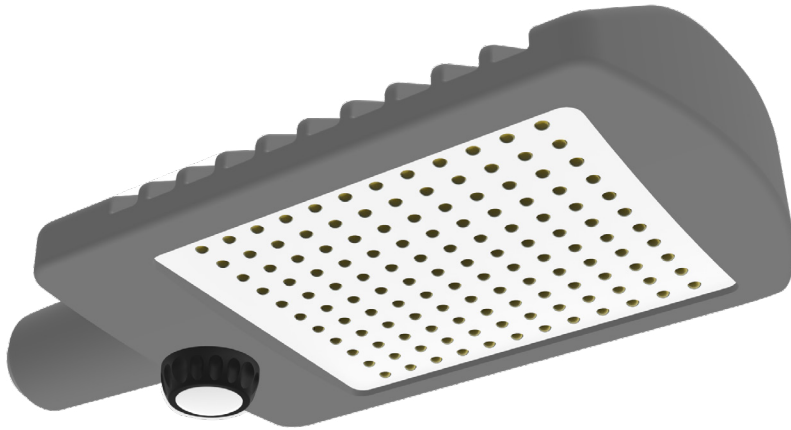
### PART NUMBER LIST

Product Images	Part Number	Description
 	<a href="#">2444029-1</a> <a href="#">3-2444029-1</a>	LUMAWISE Motion Sensor Programmable: Rectangular detection zone LUMAWISE Motion Sensor Programmable: Circular detection Zone
 	<a href="#">2396399-1</a>	LUMAWISE Motion Sensor Mask

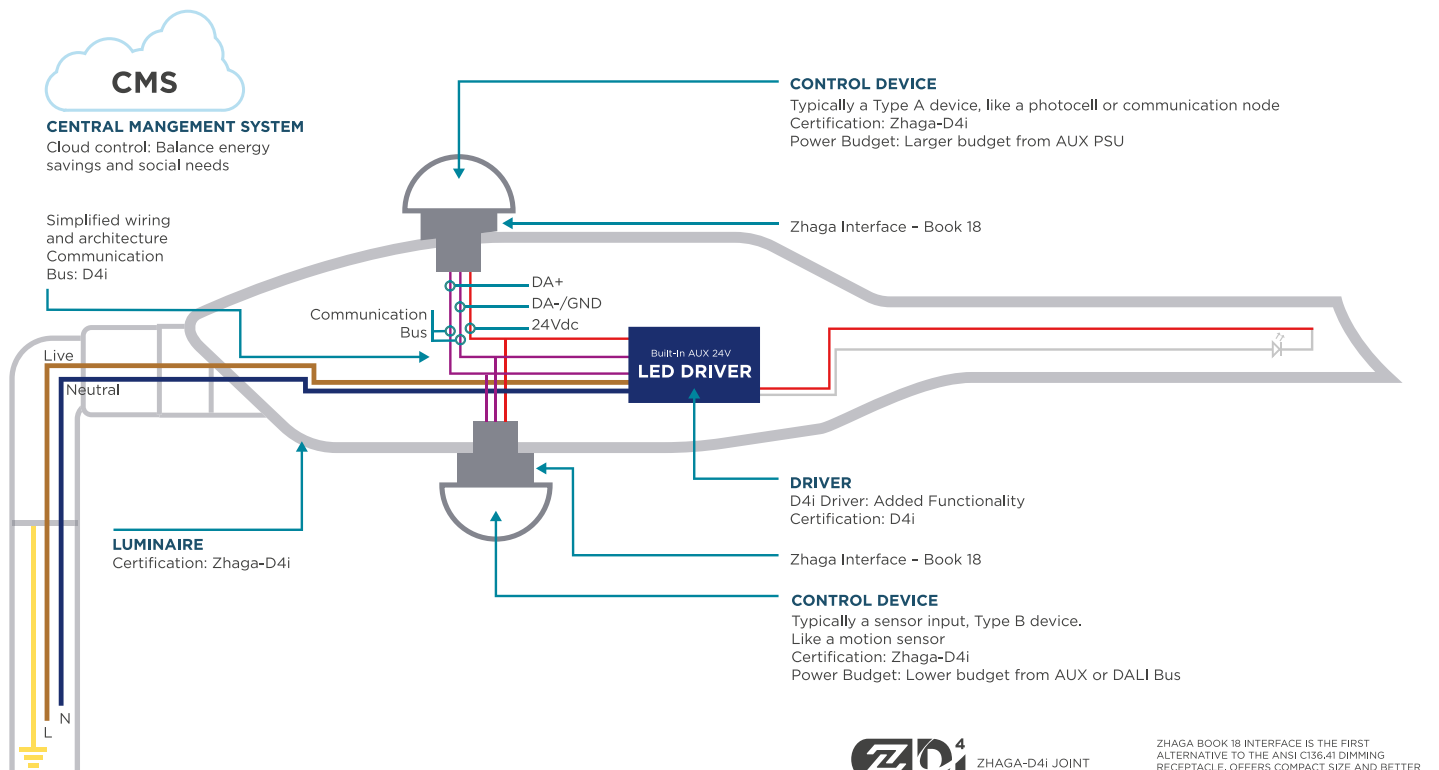
# LUMAWISE Motion Programmable

## Street lighting Motion Sensor

### LUMAWISE Motion Zhaga-D4i Certified

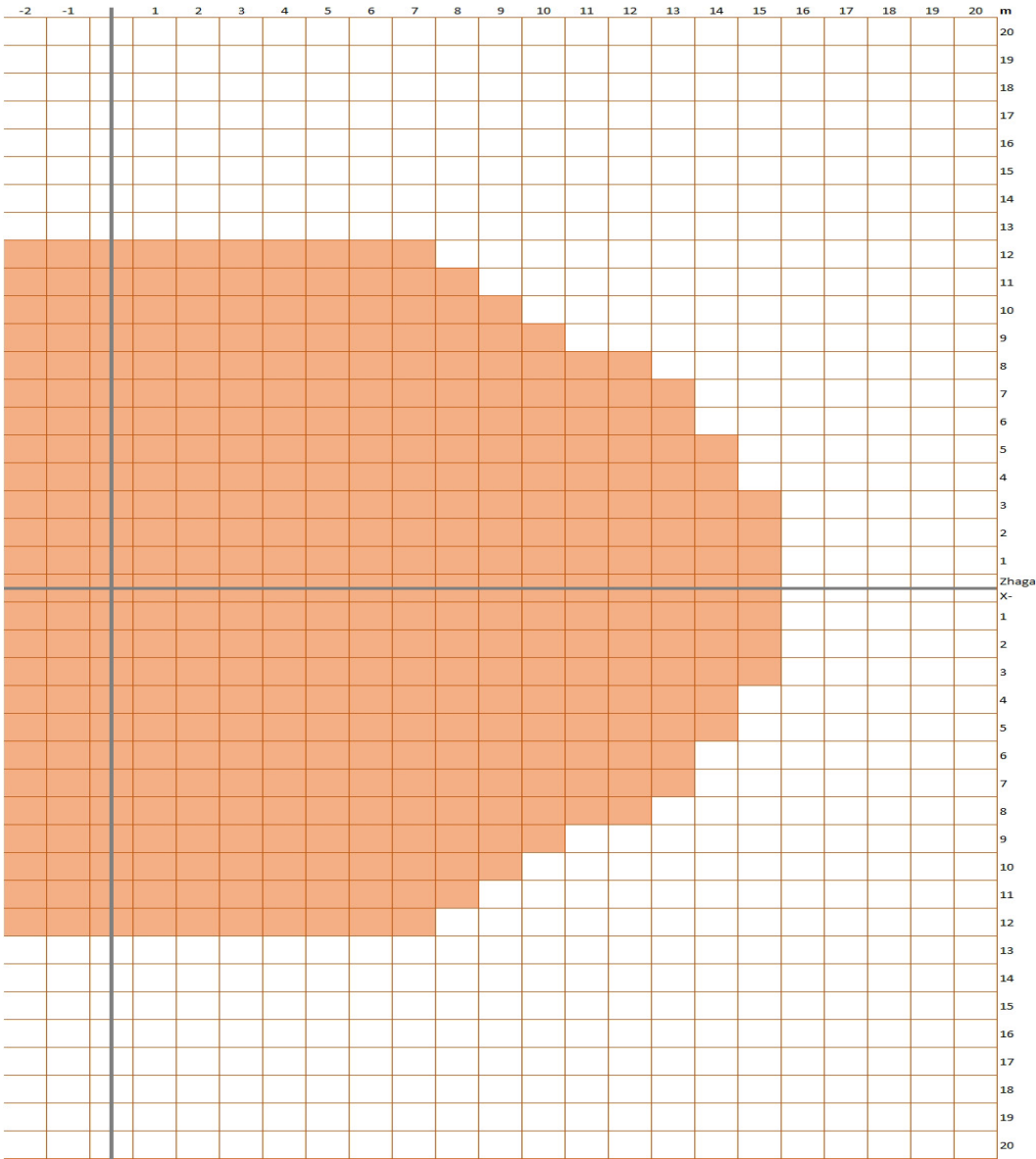


## ZHAGA TWO NODE ARCHITECTURE



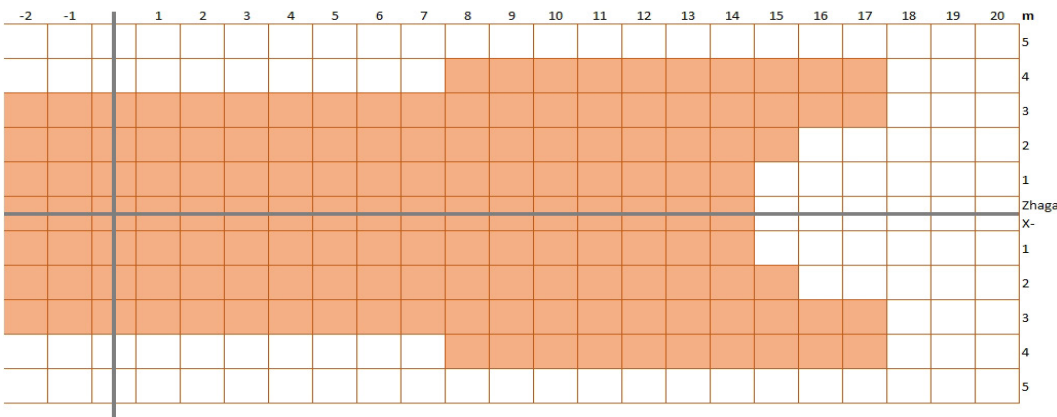
Market Leading Detection Zone

TYPICAL DETECTION DIAGRAM AT 5M MOUNTING HEIGHT



Circular Detection Zone

Only one half of detection zone shown

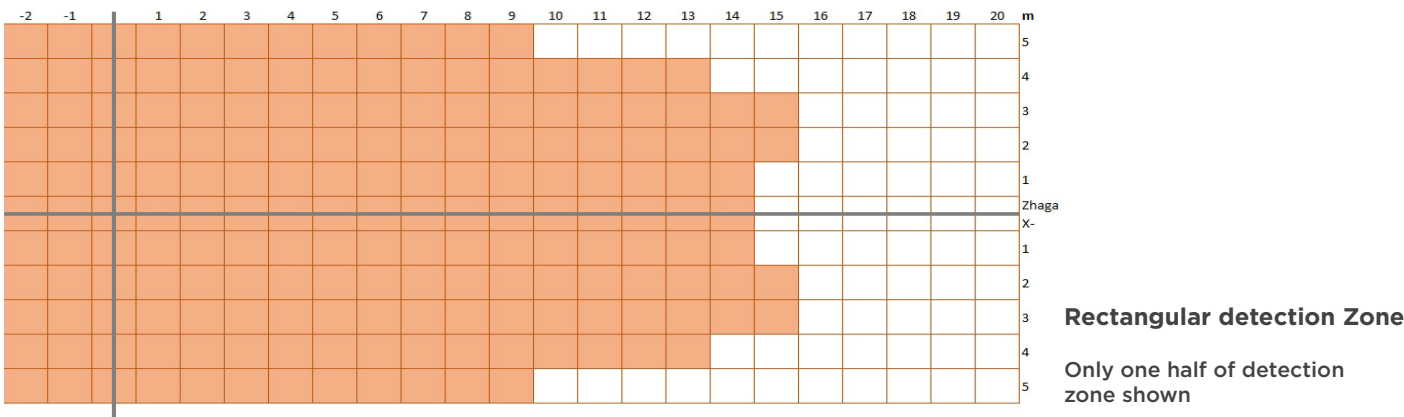
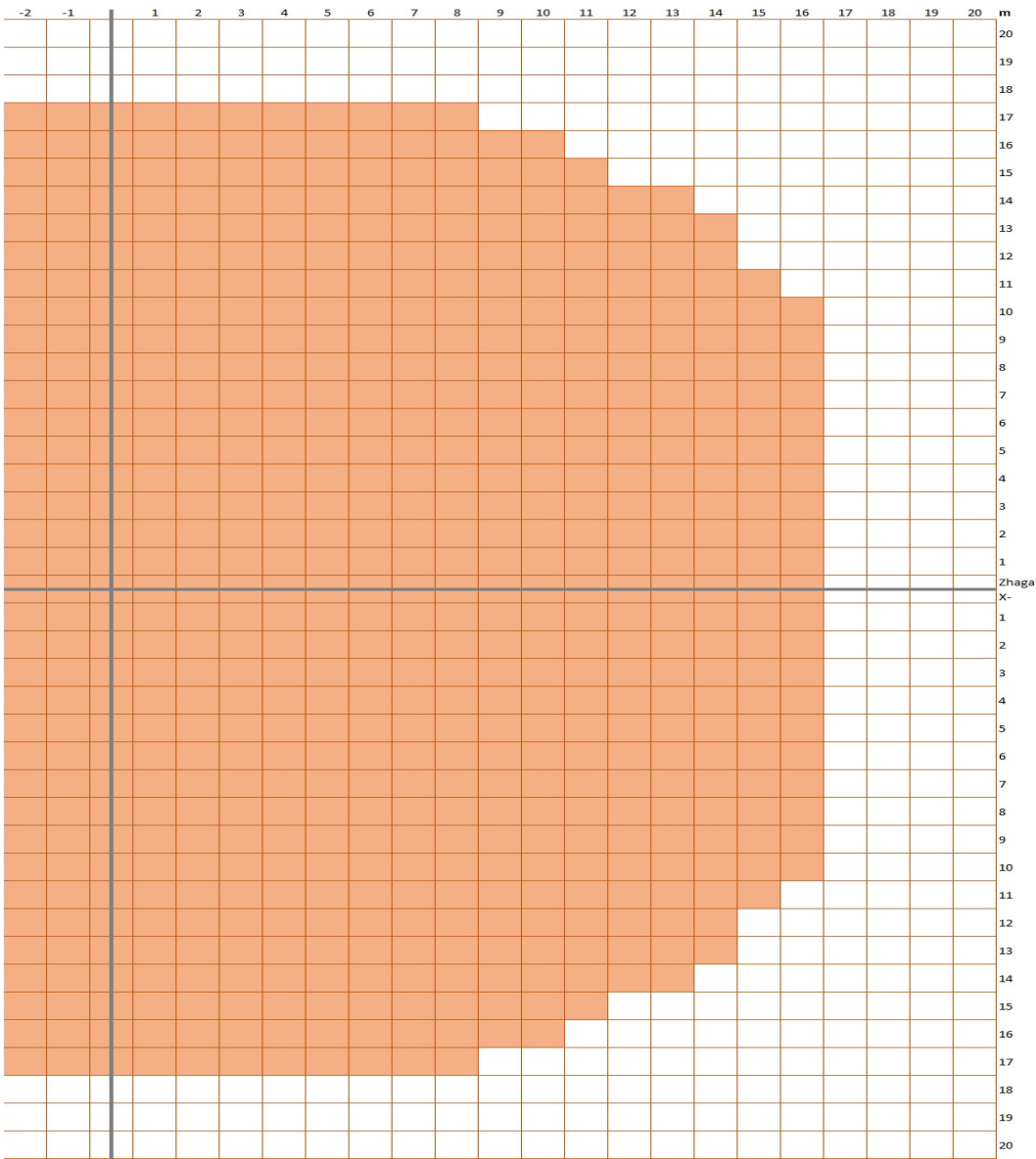


Rectangular detection Zone

Only one half of detection zone shown

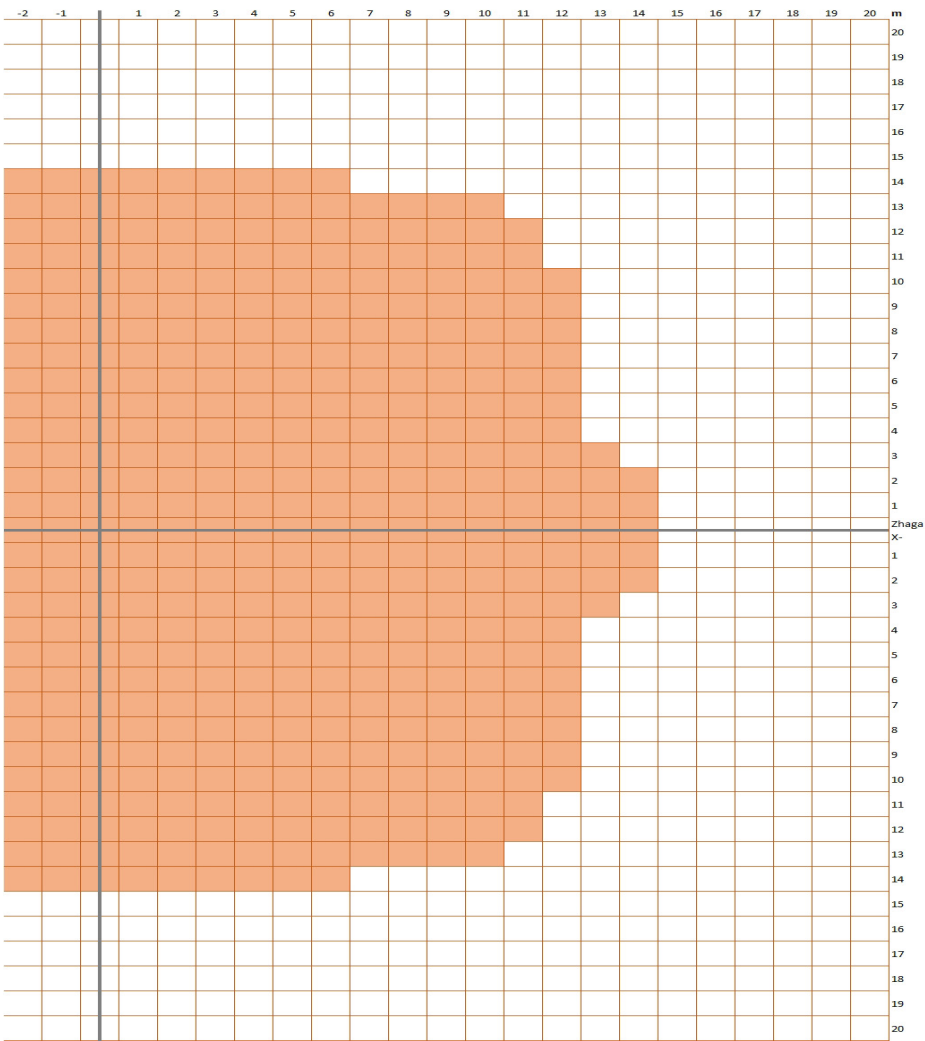
Market Leading Detection Zone

TYPICAL DETECTION DIAGRAM AT 8M MOUNTING HEIGHT

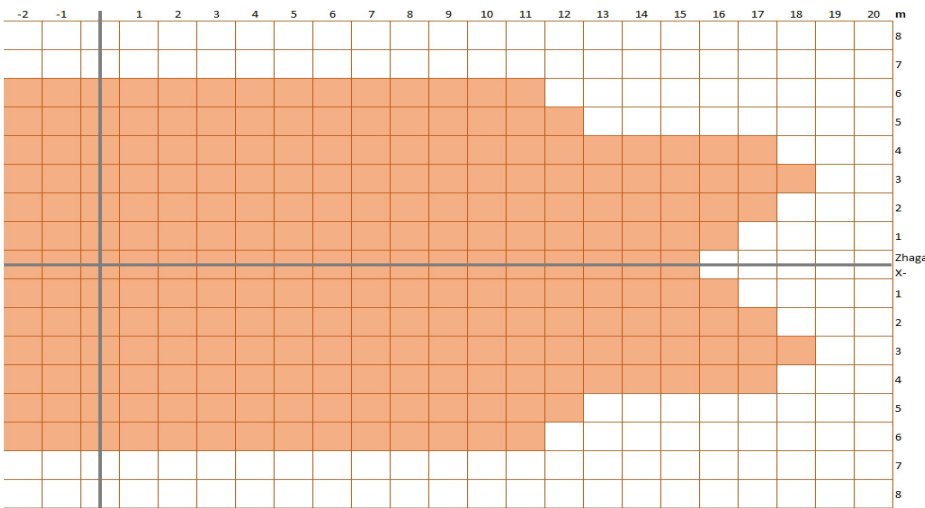


Market Leading Detection Zone

TYPICAL DETECTION DIAGRAM AT 12M MOUNTING HEIGHT

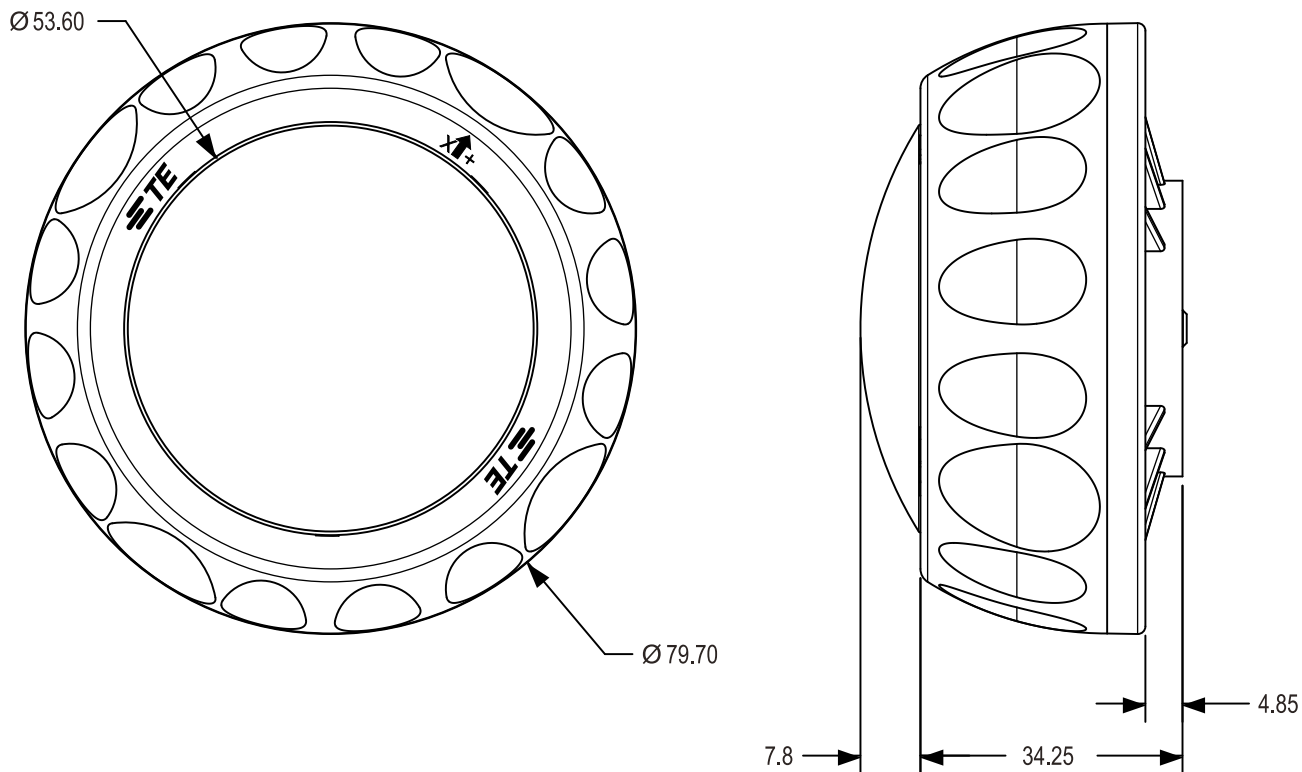


**Circular Detection Zone**  
Only one half of detection zone shown



**Rectangular detection Zone**  
Only one half of detection zone shown

### Mechanical footprint



© 2023 TE Connectivity. All Rights Reserved.

LUMAWISE, TE Connectivity, TE connectivity (logo) and Every Connection Counts are trademarks owned or licensed by TE Connectivity. All other logos, products and/or company names referred to herein might be trademarks of their respective owners.

While TE has made every reasonable effort to ensure the accuracy of the information in this brochure, TE does not guarantee that it is error-free, nor does TE make any other representation, warranty or guarantee that the information is accurate, correct, reliable or current. TE reserves the right to make any adjustments to the information contained herein at any time without notice. TE expressly disclaims all implied warranties regarding the information contained herein, including, but not limited to, any implied warranties of merchantability or fitness for a particular purpose. The dimensions in this catalog are for reference purposes only and are subject to change without notice. Specifications are subject to change without notice. Consult TE for the latest dimensions and design specifications.

07/23 AK