

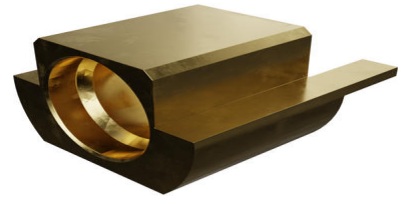
Part Number : [734155740](#)

Product Description : SMP Plug, Straight, Smooth Bore, PCB, Edge Mount, Tape and Reel, 50 Ohms

Series Number : 73406

Status : Active

Product Category : RF / Coaxial Connectors



Documents and Resources

Drawings

[734155740_sd.pdf](#)

[STEP AP242](#)

[SOLIDWORKS](#)


[Creo](#)

Specifications

[PS-89675-332-001.pdf](#)

Product Environment Compliance

Compliance

GADSL/IMDS	Not Relevant
China RoHS	 per SJ/T 11365-2006
EU ELV	Not Relevant
Low-Halogen Status	Low-Halogen per IEC 61249-2-21
REACH SVHC	Contains Lead per D(2025)4165-DC (25 June 2025) SCIP:e11df24c-7fc7-4dcf-98af-b3934eb8c58e
EU RoHS	Compliant with Exemption 6(c) per EU 2015/863

Compliance Statements

- EU RoHS
- REACH SVHC
- Low-Halogen

Industry Documents

- IPC 1752A Class C
- IPC 1752A Class D
- Molex Product Compliance Declaration
- IEC-62474
- chemSHERPA (xml)

Substances of Interest

- PFAS

EU RoHS Certificate of Compliance

Additional Product Compliance Information

Part Details

General

Status	Active
Category	RF / Coaxial Connectors
Series	73406
Description	SMP Plug, Straight, Smooth Bore, PCB, Edge Mount, Tape and Reel, 50 Ohms
Application	RF
Product Name	SMP
Style	PCB
Type	Microminiature
UPC	822350574228

Electrical

Frequency	40 GHz
Impedance	50Ω
Power / Voltage	VOLTAGE: 335 Vrms@Sea Level

Physical

Cable Attachment	N/A
Gender	Plug
Keying to Mating Part	N/A
Net Weight	0.699/g
Orientation	Straight

Packaging Type	Embossed Tape on Reel
Panel Mount	No
Panel Mount Method	N/A
PCB Mounting	Edge Mount
PCB Thickness - Recommended	1.68mm
Reverse Polar	No
Wire/Cable Type	N/A

This document was generated on May 13, 2026