



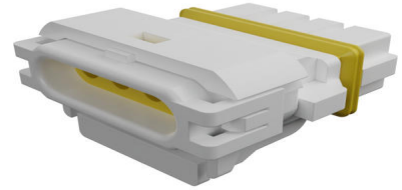
Part Number : [521170410](#)

Product Description : Mizu-P25 Waterproof Wire-to-Wire Receptacle Housing, 2.50mm Pitch, 4 Circuits, White

Series Number : 52117

Status : Active

Product Category : Connector Housings



Documents and Resources

Drawings

[521170410 sd.pdf](#)

3D Models and Design Files

[STEP AP242](#)

[SOLIDWORKS](#)

[Creo](#)

Specifications

[AS-52117-001-001.pdf](#)


[AS-52117-001-JP-001.pdf](#)

[521170000-P00.pdf](#)

[PS-52117-008-001.pdf](#)

Product Environment Compliance

Compliance

GADSL/IMDS	Compliant
China RoHS	 per SJ/T 11365-2006
EU ELV	Compliant per 2000/53/EC
Low-Halogen Status	Not Low-Halogen per IEC 61249-2-21
REACH SVHC	Not Contained per D(2025)4165-DC (25 June 2025)
EU RoHS	Compliant per EU 2015/863

Compliance Statements

- EU RoHS
- REACH SVHC
- Low-Halogen

Industry Documents

- IPC 1752A Class C
- IPC 1752A Class D
- Molex Product Compliance Declaration
- IEC-62474
- chemSHERPA (xml)

Substances of Interest

- PFAS

EU RoHS Certificate of Compliance

Additional Product Compliance Information

Part Details

General

Status	Active
Category	Connector Housings
Series	52117
Description	Mizu-P25 Waterproof Wire-to-Wire Receptacle Housing, 2.50mm Pitch, 4 Circuits, White
Application	Wire-to-Wire
Product Name	Mizu-P25 Waterproof,Splash Proof
UPC	800754368728

Agency

UL	E29179
----	--------

Physical

Circuits (maximum)	4
Color - Resin	White
Gender	Receptacle
Glow-Wire Capable	No
Lock to Mating Part	Yes

Material - Resin	Polyester
Net Weight	1026.800/mg
Number of Rows	1
Packaging Type	Tray
Panel Mount	No
Pitch - Mating Interface	2.50mm
Stackable	No
Temperature Range - Operating	-40° to +105°C

Solder Process Data

Lead-Free Process Capability	N/A
------------------------------	-----

Mates With / Use With

Mates with Part(s)

Description	Part Number
Mizu-P25 Waterproof Plug Housings	<u>52116</u>

Use with Part(s)

Description	Part Number
Mizu-P25 Female Crimp Terminals	<u>50039</u>

Application Tooling

Global

Description	Part Number
Sealing Cap Hand Tool	<u>622024400</u>

This document was generated on May 20, 2026